



**T R O P H Y**  
PROPERTIES AND AUCTION  
LAND | RECREATIONAL | RESIDENTIAL

# 43 +/- Acre Maries County Missouri Residence/Hunting Farm for Sale

www.TrophyPA.com • (855) 573-5263 • leads@trophyapa.com



**PROPERTY ADDRESS:**  
34870 Maries Road 204  
Meta, MO 65058

**PRICE:** \$229,900  
**ACRES:** 43  
**COUNTY:** Maries

**PROPERTY HIGHLIGHTS:**

- 43 +/- Acres
- Privacy
- Excellent Hunting
- Permanent Hunting Stands
- Wet Weather Creek
- Updated 2 Bed/2 Bath Home

**PROPERTY DESCRIPTION:**

43 +/- acre Maries County, Missouri farm/residence for sale that has everything to offer for a hobby farmer or outdoorsman. This property is surrounded by large landholders and abundant wildlife that will allow you to maintain some of the best hunting habitat around. The ground consists of 70/30 wooded vs open with some fencing and a wet weather creek on the west boundary. The house is very spacious, offers tons of storage and has had several updates adding some intriguing eye appeal. An operational wood stove in the basement is an excellent addition to this homes efficiency in the winter months. Tracts like this with a nice home are hard to come by and this one is a must see!



**PRESENTED BY:**

**DEREK KEVER**

**Land Specialist - MO**

M: (573) 619-7763

P: (855) 573-5263 x728

dkever@trophyapa.com

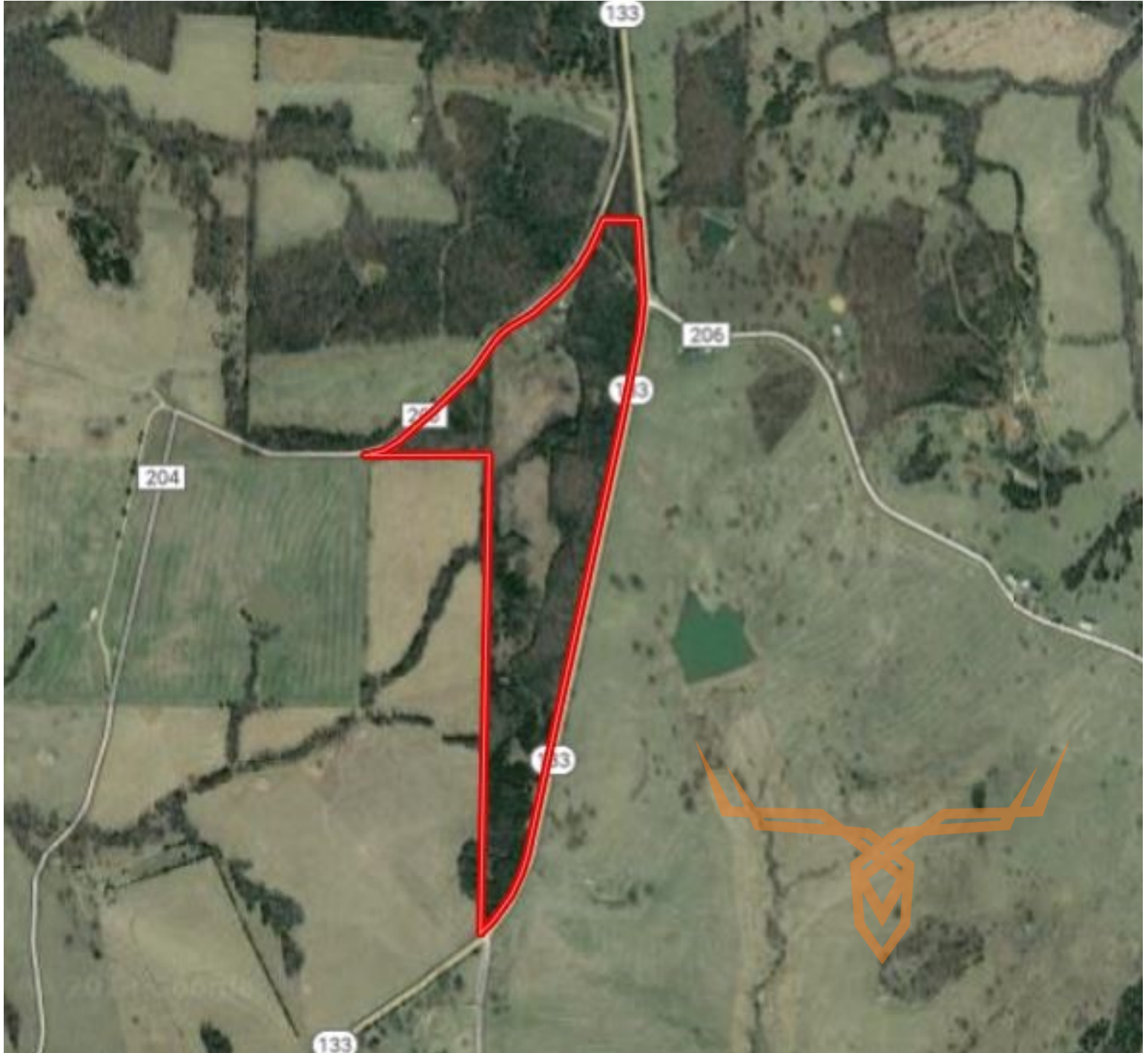
Trophy Properties and Auction  
15480 Clayton Road  
Suite 101  
Ballwin, MO 63011  
www.Trophyapa.com  
leads@trophyapa.com



**T R O P H Y**  
PROPERTIES AND AUCTION  
LAND | RECREATIONAL | RESIDENTIAL

## 43 +/- Acre Maries County Missouri Residence/Hunting Farm for Sale

[www.TrophyPA.com](http://www.TrophyPA.com) • (855) 573-5263 • [leads@trophyPA.com](mailto:leads@trophyPA.com)



Broker does not guarantee the accuracy of sq. ft., lot size, or other information, buyer is advised to independently verify the accuracy of information through personal inspection and with appropriate professionals

**TAXES: \$762**

**TAX YEAR: 2018**