



T R O P H Y
PROPERTIES AND AUCTION
LAND | RECREATIONAL | RESIDENTIAL

115 +/- Acre Illinois Recreational Farm for Sale - Adams County

www.TrophyPA.com • (855) 573-5263 • leads@trophyapa.com

PRICE IMPROVED



PROPERTY ADDRESS:

00 N 600th Ave.
Liberty, IL 62347

PRICE: \$492,000

ACRES: 115

COUNTY: Adams

PROPERTY HIGHLIGHTS:

- 115 +/- acres
- Excellent deer hunting
- Newly remodeled lodge
- Cash rented tillable ground
- Turkey hunting
- Trail system through property
- Adams County Illinois Real estate

PROPERTY DESCRIPTION:

If you are looking for a recreational farm with a home that is ready to walk in and hunt then look no further! This beautiful 115 +/- acre Illinois recreational farm for sale is located just south of Siloam Springs State Park in Adams County. It is made up of 22 acres tillable which is currently cash rented for additional yearly income and a large tract of mature timber which is absolutely loaded with deer sign. The current owner spared no expense on making a trail system through the timber which make accessibility for hunting second to none.

In addition to the tillable and timber ground, there is a newly remodeled 1,500 sq. ft. lodge located on the property with rural water and electric. There is also a large machine shed located right next to the house for lots of storage. The management on this property has been set in place for several years and the trail cam history and kill photos show that it is working.



PRESENTED BY:

JARED HELLER

Land Specialist - IL

M: (217) 440-6713

P: (855) 573-5263 x736

jheller@trophyapa.com

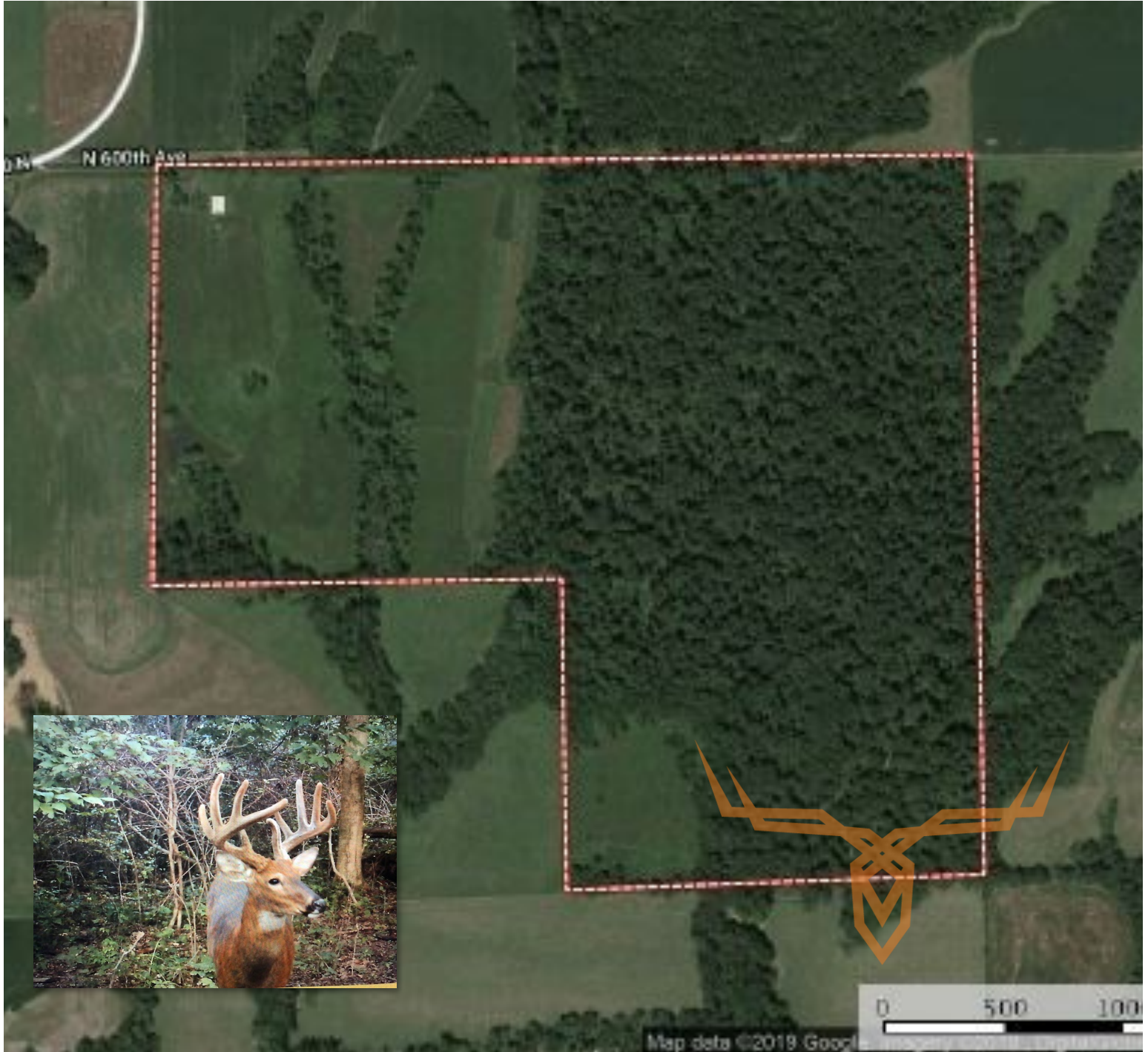
Trophy Properties and Auction
15480 Clayton Road
Suite 101
Ballwin, MO 63011
www.Trophyapa.com
leads@trophyapa.com



T R O P H Y
PROPERTIES AND AUCTION
LAND | RECREATIONAL | RESIDENTIAL

115 +/- Acre Illinois Recreational Farm for Sale - Adams County

www.TrophyPA.com • (855) 573-5263 • leads@trophyPA.com



Broker does not guarantee the accuracy of sq. ft., lot size, or other information, buyer is advised to independently verify the accuracy of information through personal inspection and with appropriate professionals

TAXES: \$1,739

TAX YEAR: 2017