



T R O P H Y
PROPERTIES AND AUCTION
LAND | RECREATIONAL | RESIDENTIAL

320 +/- Acre Kansas Hunting Property for Sale - Elk County

www.TrophyPA.com • (855) 573-5263 • leads@trophyapa.com



PROPERTY ADDRESS:

2175 Road 24
Fall River, KS 67047

PRICE: \$638,400

ACRES: 320

COUNTY: Elk

PROPERTY HIGHLIGHTS:

- New Fencing
- Mature Wildlife
- 2 Food Plots
- 2 Box Blinds
- Multiple Food Plot Locations
- Multiple Stand Sites
- Several Watering Holes
- 2.5 Hours from KC
- 1 Hour from Wichita

PROPERTY DESCRIPTION:

This place is cooler than a polar bears toenails!! When you look at property, every single one is unique in many ways. Some are large, some are small. Some are flat and good for soybean and corn rotation year after year. Then there are some that are good at hiding wildlife with every hill, tree, and acre of grass. This 320 acre Kansas hunting property for sale is 100% that! It has native grass that allows for bedding of whitetail deer and turkey all year-round. It has trees in large blocks as well as small fingers running through much of the property that offers shade, sanctuary and browse to any and all wildlife in the area. If you are looking to graze cattle on a healthy amount of grass, then look no further! The property has great fencing all the way around and has been well maintained over the years. There are multiple watering holes for cattle and wildlife to thrive. The small valleys provide a great wind block to wildlife when they are not out foraging the fields. There are dozens of areas to plant food plots and erect stands for all wind directions making this an unbelievable plot of land. The owner has cut and fenced in a couple of killer food plots that are attracting game daily. There are 2 box blinds in place that are certain to catch that SE Kansas buck trailing that doe. This place truly needs to be seen in person to appreciate its character and beauty. One drive through the property and you will see why it houses large amounts of turkey and very large whitetail deer!



PRESENTED BY:

SAM VOSS

Land Specialist - KS/MO

M: (913) 526-9369

P: (855) 573-5263 x745

svoss@trophyapa.com

Trophy Properties and Auction

15480 Clayton Road
Suite 101

Ballwin, MO 63011

www.Trophyapa.com

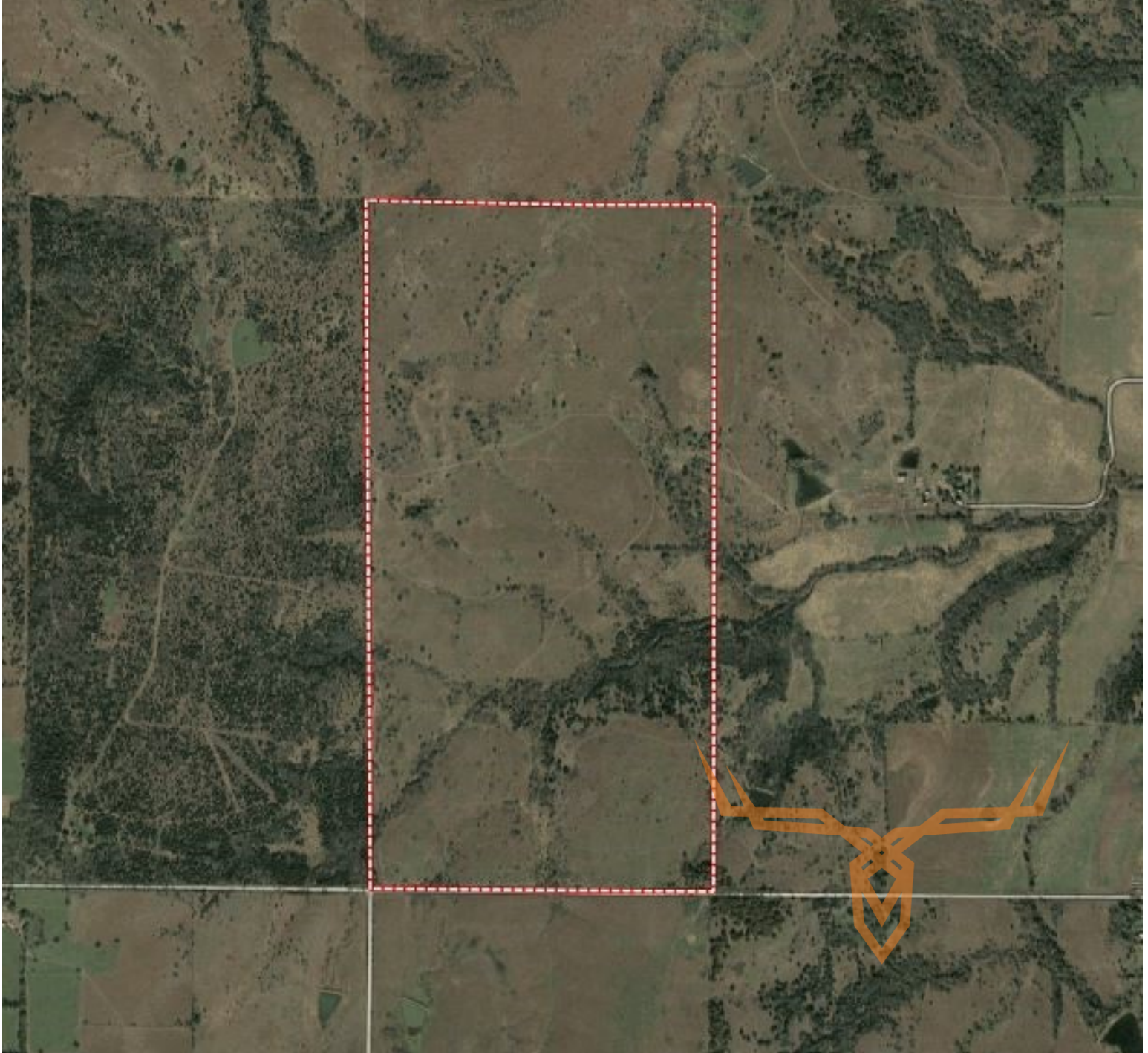
leads@trophyapa.com



T R O P H Y
PROPERTIES AND AUCTION
LAND | RECREATIONAL | RESIDENTIAL

320 +/- Acre Kansas Hunting Property for Sale - Elk County

www.TrophyPA.com • (855) 573-5263 • leads@trophy.com



Broker does not guarantee the accuracy of sq. ft., lot size, or other information, buyer is advised to independently verify the accuracy of information through personal inspection and with appropriate professionals

TAXES: \$640

TAX YEAR: 2018