

All Measurements are
For FSA Programs Only

Wetland Determination Identifiers

- Restricted Use
- ▼ Limited Restrictions
- Exempt from Conservation Compliance Provisions

Disclaimer: Wetland identifiers do not represent the size, shape or specific determination of the area. Refer to your original determination (CPA-026 and attached maps) for exact wetland boundaries and determinations, or contact NRCS.

Index for T-9898

Lewis Co. FSA

- wht = wheat-srw-gr
- corn = corn-yel-gr
- SB = soybn-com-gr
- Hay=mixfg-fg
- Past or GZ= mixfg-gz
- AGM = mixfg-agm-fg
- TP=TimberPast-Grass-FTA-Graze-31
- All flds NI unless noted
- *Unless notated on Map

1:15,870

Program Year: 2019

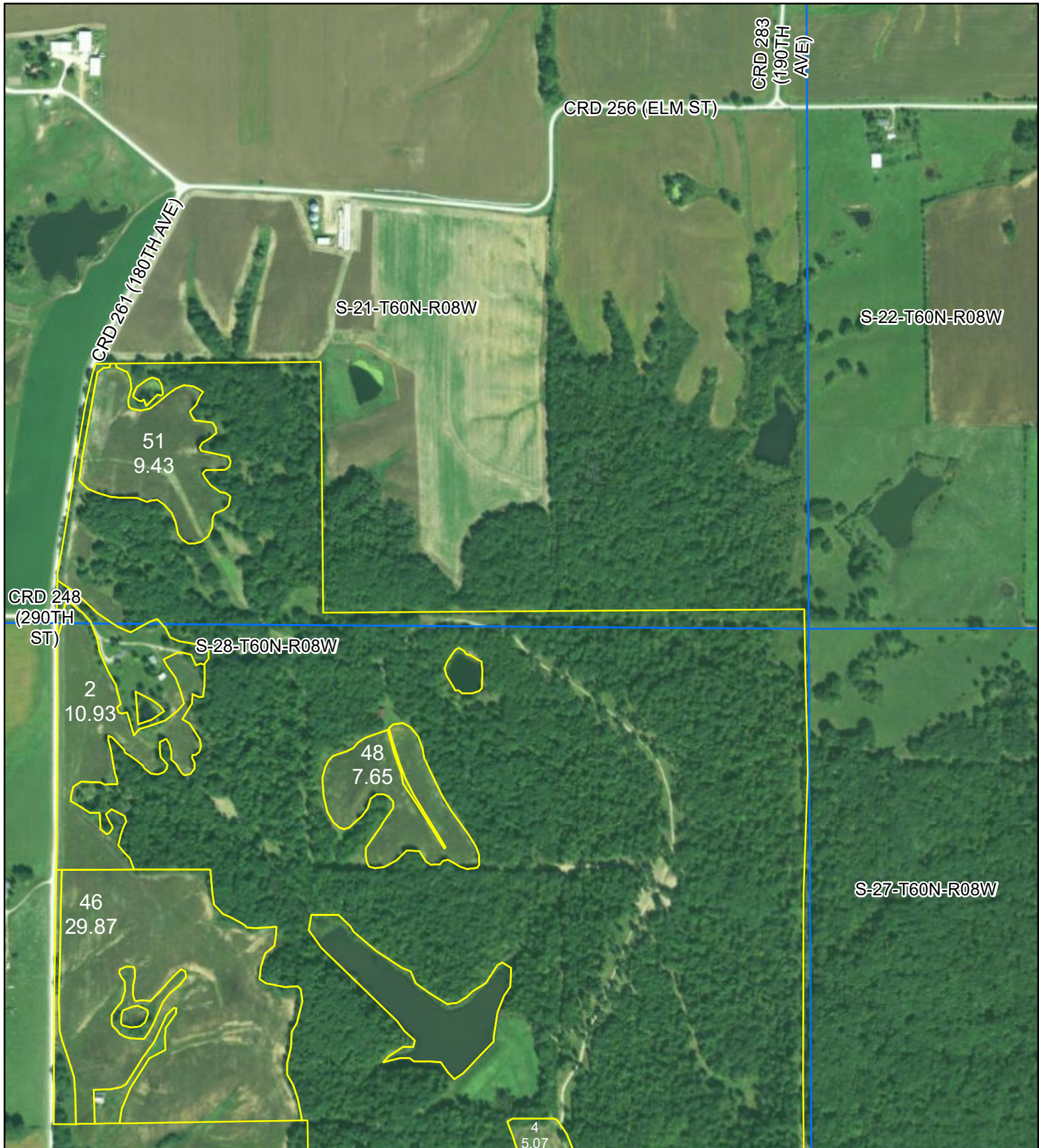
Created: 4/26/2019

Flown: 2016-06-15

- clu
- crp
- Index

Farm 3807
Tract 9898





**All Measurements are
For FSA Programs Only**
Wetland Determination Identifiers

- Restricted Use
- ▼ Limited Restrictions
- Exempt from Conservation Compliance Provisions

Disclaimer: Wetland identifiers do not represent the size, shape or specific determination of the area. Refer to your original determination (CPA-026 and attached maps) for exact wetland boundaries and determinations, or contact NRCS.

Pg 1 of 3 T-9898

Lewis Co. FSA

wht = wheat-srw-gr
corn = corn-yel-gr
SB = soybn-com-gr
Hay=mixfg-fg
Past or GZ= mixfg-gz
AGM = mixfg-agm-fg
TP=TimberPast-Grass-FTA-Graze-31
All fids NI unless noted
*Unless noted on Map

1:7,920

Program Year: 2019

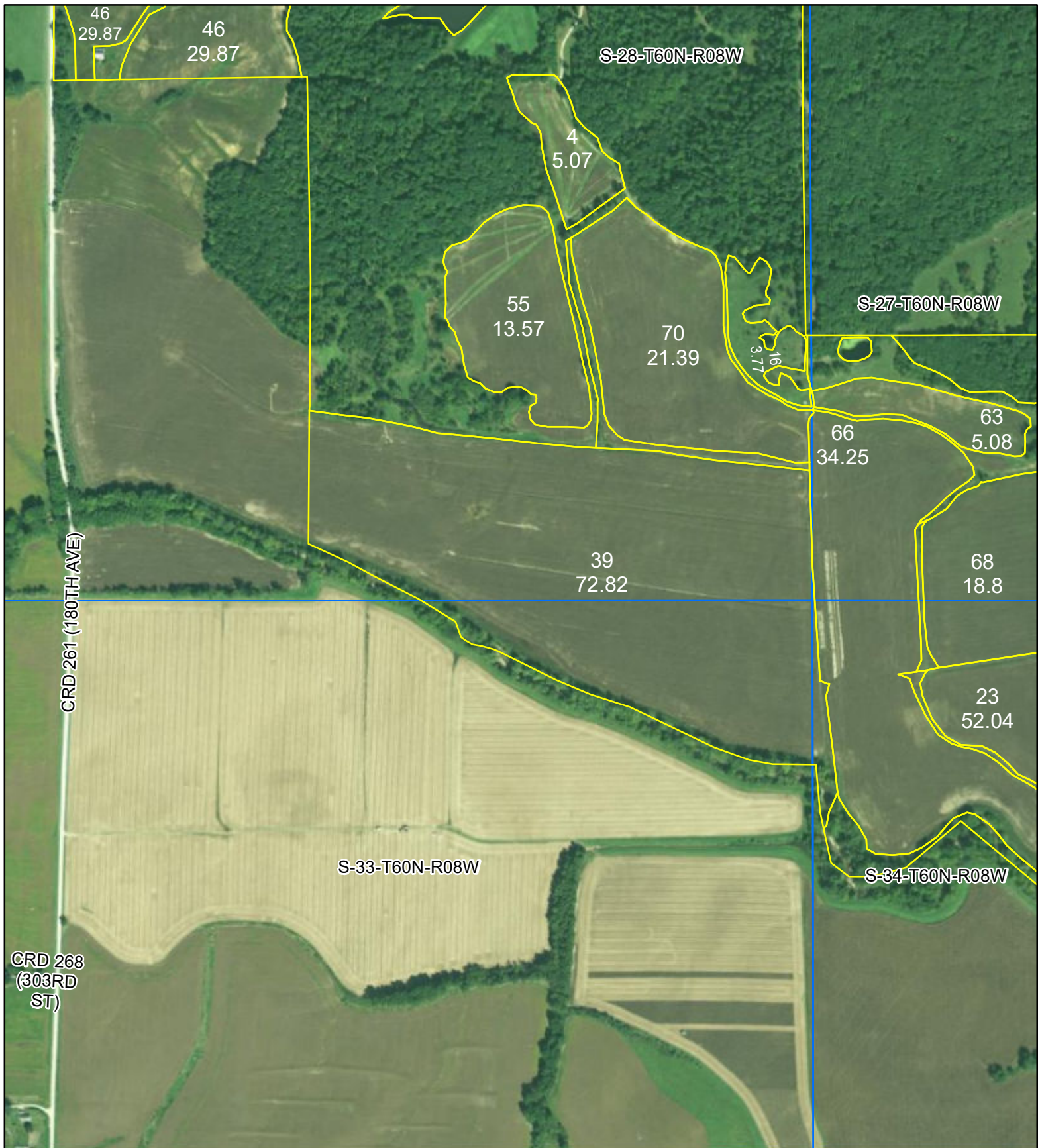
Created: 4/26/2019

Flown: 2016-06-15

- clu
- crp
- plss

Farm 3807
Tract 9898





All Measurements are For FSA Programs Only

Wetland Determination Identifiers

- Restricted Use
- ▼ Limited Restrictions
- Exempt from Conservation Compliance Provisions

Disclaimer: Wetland identifiers do not represent the size, shape or specific determination of the area. Refer to your original determination (CPA-026 and attached maps) for exact wetland boundaries and determinations, or contact NRCS.

Pg 2 of 3 T-9898

Lewis Co. FSA

wht = wheat-srw-gr
 corn = corn-yel-gr
 SB = soybn-com-gr
 Hay=mixfg-fg
 Past or GZ= mixfg-gz
 AGM = mixfg-agm-fg
 TP=TimberPast-Grass-FTA-Graze-31
 All flds NI unless noted
 *Unless noted on Map

1:7,920

Program Year: 2019

Created: 4/26/2019

Flown: 2016-06-15

- clu
- crp
- plss

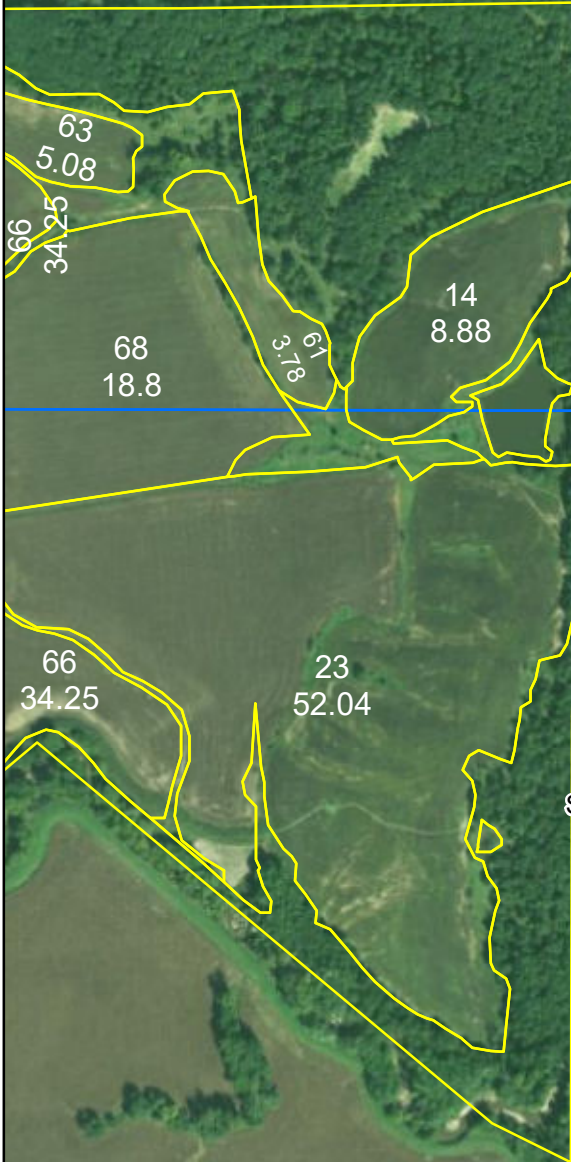
Farm 3807
Tract 9898



S-27-T60N-R08W

S-34-T60N-R08W

S-35-T60N-R08W



**All Measurements are
For FSA Programs Only**

Wetland Determination Identifiers

- Restricted Use
- ▼ Limited Restrictions
- Exempt from Conservation Compliance Provisions

Disclaimer: Wetland identifiers do not represent the size, shape or specific determination of the area. Refer to your original determination (CPA-026 and attached maps) for exact wetland boundaries and determinations, or contact NRCS.

Pg 3 of 3 T-9898

Lewis Co. FSA

wht = wheat-srw-gr
 corn = corn-yel-gr
 SB = soybn-com-gr
 Hay=mixfg-fg
 Past or GZ= mixfg-gz
 AGM = mixfg-agm-fg
 TP=TimberPast-Grass-FTA-Graze-31
 All flds NI unless noted
 *Unless noted on Map

1:7,920

Program Year: 2019

Created: 4/26/2019

Flown: 2016-06-15

- clu
- crp
- plss

**Farm 3807
Tract 9898**





**All Measurements are
For FSA Programs Only**

Wetland Determination Identifiers

- Restricted Use
- ▼ Limited Restrictions
- Exempt from Conservation Compliance Provisions

Disclaimer: Wetland identifiers do not represent the size, shape or specific determination of the area. Refer to your original determination (CPA-026 and attached maps) for exact wetland boundaries and determinations, or contact NRCS.

Lewis Co. FSA

wht = wheat-srw-gr
 corn = corn-yel-gr
 SB = soybn-com-gr
 Hay=mixfg-fg
 Past or GZ= mixfg-gz
 AGM = mixfg-agm-fg
 TP=TimberPast-Grass-FTA-Graze-31
 All flds NI unless notated
 *Unless notated on Map

1:7,920

Program Year: 2019

Created: 4/26/2019

Flown: 2016-06-15

- clu
- crp
- plss

**Farm 3807
Tract 10116**



Abbreviated 156 Farm Record

Tract 9898 Continued ...

Corn	131.21	0.00	0	82
Soybeans	38.87	0.00	0	28

TOTAL 184.39 0.00

NOTES

--

Tract Number : 10116

Description : S28/T60R8

FSA Physical Location : MISSOURI/LEWIS

ANSI Physical Location : MISSOURI/LEWIS

BIA Unit Range Number :

HEL Status : HEL determinations not completed for all fields on the tract

Wetland Status : Wetland determinations not complete

WL Violations : None

Owners : RJW GROUP LLC

Other Producers : [REDACTED]

Recon ID : None

Tract Land Data

Farm Land	Cropland	DCP Cropland	WBP	WRP	CRP	GRP	Sugarcane
79.60	58.25	58.25	0.00	0.00	0.00	0.00	0.00
State Conservation	Other Conservation	Effective DCP Cropland	Double Cropped	MPL	EWP	DCP Ag. Rel Activity	Broken From Native Sod
0.00	0.00	58.25	0.00	0.00	0.00	0.00	0.00

DCP Crop Data

Crop Name	Base Acres	CCC-505 CRP Reduction Acres	CTAP Yield	PLC Yield
Wheat	2.80	0.00	0	42
Corn	25.70	0.00	0	82
Soybeans	7.61	0.00	0	28

TOTAL 36.11 0.00

NOTES

--

In accordance with Federal civil rights law and U.S. Department of Agriculture (USDA) civil rights regulations and policies, the USDA, its Agencies, offices, and employees, and institutions participating in or administering USDA programs are prohibited from discriminating based on race, color, national origin, religion, sex, gender identity (including gender expression), sexual orientation, disability, age, marital status, family/parental status, income derived from a public assistance program, political beliefs, or reprisal or retaliation for prior civil rights activity, in any program or activity conducted or funded by USDA (not all bases apply to all programs). Remedies and complaint filing deadlines vary by program or incident.

Persons with disabilities who require alternative means of communication for program information (e.g., Braille, large print, audiotape, American Sign Language, etc.) should contact the responsible Agency or USDA's TARGET Center at (202) 720-2600 (voice and TTY) or contact USDA through the Federal Relay Service at (800) 877-8339. Additionally, program information may be made available in languages other than English.

To file a program discrimination complaint, complete the USDA Program Discrimination Complaint Form, AD-3027, found online at http://www.ascr.usda.gov/complaint_filing_cust.html and at any USDA office or write a letter addressed to USDA and provide in the letter all of the information requested in the form. To request a copy of the complaint form, call (866) 632-9992. Submit your completed form or letter to USDA by: (1) mail: U.S. Department of Agriculture Office of the Assistant Secretary for Civil Rights 1400 Independence Avenue, SW Washington, D.C. 20250-9410; (2) fax: (202) 690-7442; or (3) e-mail: program.intake@usda.gov. USDA is an equal opportunity provider, employer, and lender.