



**T R O P H Y**  
PROPERTIES AND AUCTION  
LAND | RECREATIONAL | RESIDENTIAL

# Randolph County Land for Sale - 73 +/- Acres

www.TrophyPA.com • (855) 573-5263 • leads@trophypa.com



## PROPERTY ADDRESS:

00 County Road 2030  
Clifton Hill, MO 65244

**PRICE:** \$239,075

**ACRES:** 73

**COUNTY:** Randolph

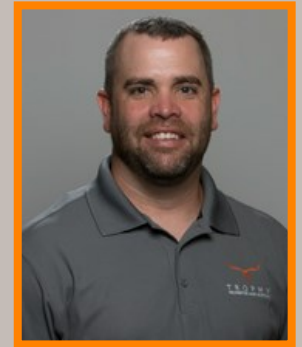
## PROPERTY HIGHLIGHTS:

- 73 +/- acres
- 43 +/- acres in CRP until 9/30/22
- Annual income of \$4,322
- 30x50 Morton Building
- Westran School District
- Building sites
- Hunting

## PROPERTY DESCRIPTION:

This Randolph County 73 +/- acre tract is a flat to gently rolling farm with hunting and income. Along with 43 +/- acres in CRP with an annual income of \$4,322, this farm has a 30x50 Morton building that could be converted into living courters. There are an additional 177 +/- acres that border this farm that can be purchased.

The farm is located 10 +/- miles west of Moberly, 50 +/- north of Columbia and a little over 2 hours east of Kansas City, MO. Thomas Hill Reservoir is approximately 20 miles north of the farm. Thomas Hill Reservoir is managed primarily for largemouth bass, crappie, hybrid striped bass, and catfish. The warm water discharge remains ice-free during the winter providing a unique winter fishing opportunity.



**PRESENTED BY:**

**JASON CHINN**

**Land Specialist - MO**

M: (660) 541-5058

P: (855) 573-5263 x708

E: jchinn@trophypa.com

**Trophy Properties and Auction**

15480 Clayton Road

Suite 101

Ballwin, MO 63011

www.Trophypa.com

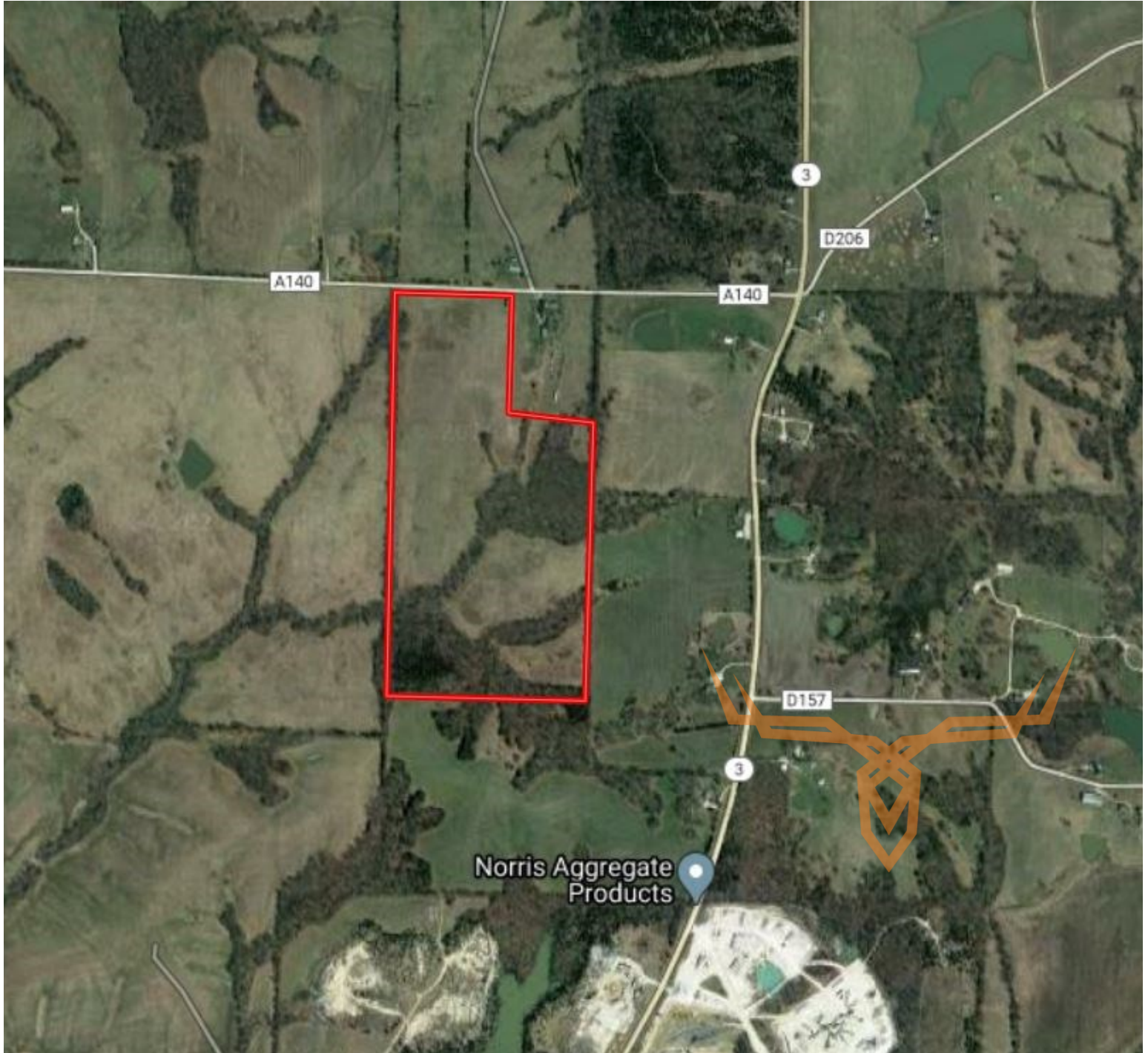
leads@trophypa.com



**T R O P H Y**  
PROPERTIES AND AUCTION  
LAND | RECREATIONAL | RESIDENTIAL

# Randolph County Land for Sale - 73 +/- Acres

[www.TrophyPA.com](http://www.TrophyPA.com) • (855) 573-5263 • [leads@trophy.com](mailto:leads@trophy.com)



Broker does not guarantee the accuracy of sq. ft., lot size, or other information, buyer is advised to independently verify the accuracy of information through personal inspection and with appropriate professionals