



T R O P H Y
PROPERTIES AND AUCTION
LAND | RECREATIONAL | RESIDENTIAL

162 +/- Acre Kansas Hunting Property for Sale - Pottawatomie County

www.TrophyPA.com • (855) 573-5263 • leads@trophyha.com



PROPERTY ADDRESS:

00 Booth Creek St.
Olsburg, KS 66520

PRICE: \$514,350

ACRES: 162

COUNTY: Pottawatomie

PROPERTY HIGHLIGHTS:

- 162 +/- acres of prime hunting
- 2 Guaranteed Kansas landowner tags each year
- Turnkey hunting of whitetail deer and turkeys
- Mature wildlife
- Multiple watering sites
- 3 box blinds & 2 feeders in place
- 7 ac. of beans & 16 ac. of alfalfa
- 23 ac. of tillable income if desired
- Vast trail camera picture history
- Multiple set-ups for all wind directions
- Close to Tuttle Creek Wildlife Area
- 1 Hour and 15 minutes to Topeka, Kansas
- 2 hours from Kansas City
- 15 Minutes from Manhattan, Kansas

PROPERTY DESCRIPTION:

Pottawatomie County Kansas has long been a stronghold for big mature whitetail deer and gobs of turkeys. If you look just north of Olsburg Kansas you will find 162 acres that are just south of the famed Tuttle Creek Wildlife Area that is packed with opportunities. When I look at hunting land I try and envision how I would set it up whether it would be a box blind on this corner preparing for a southwest wind, or a blind on the other corner preparing for that hard late winter north wind that is next to a plot of alfalfa, standing beans or a feeder full of a corn and protein mix. Well, when I set foot on this particular property I didn't have to imagine much at all because it is already set up and ready to go.



PRESENTED BY:

SAM VOSS

Land Specialist - MO/KS

M: (913) 526-9369

P: (855) 573-5263 x745

E: svoss@trophyha.com

Trophy Properties and Auction

15480 Clayton Road

Suite 101

Ballwin, MO 63011

www.Trophyha.com

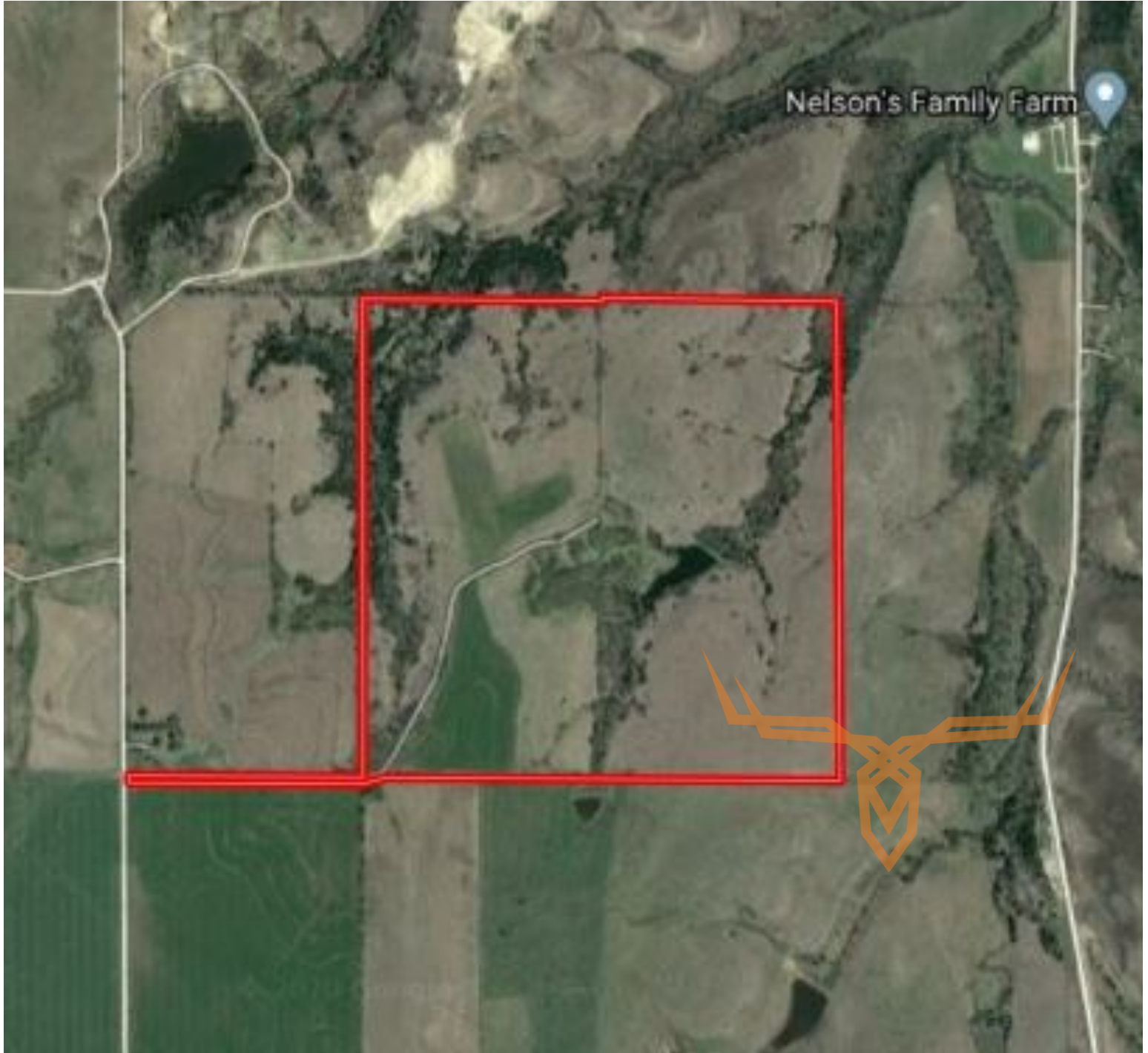
leads@trophyha.com



T R O P H Y
PROPERTIES AND AUCTION
LAND | RECREATIONAL | RESIDENTIAL

162 +/- Acre Kansas Hunting Property for Sale - Pottawatomie County

www.TrophyPA.com • (855) 573-5263 • leads@trophy.com



Broker does not guarantee the accuracy of sq. ft., lot size, or other information, buyer is advised to independently verify the accuracy of information through personal inspection and with appropriate professionals