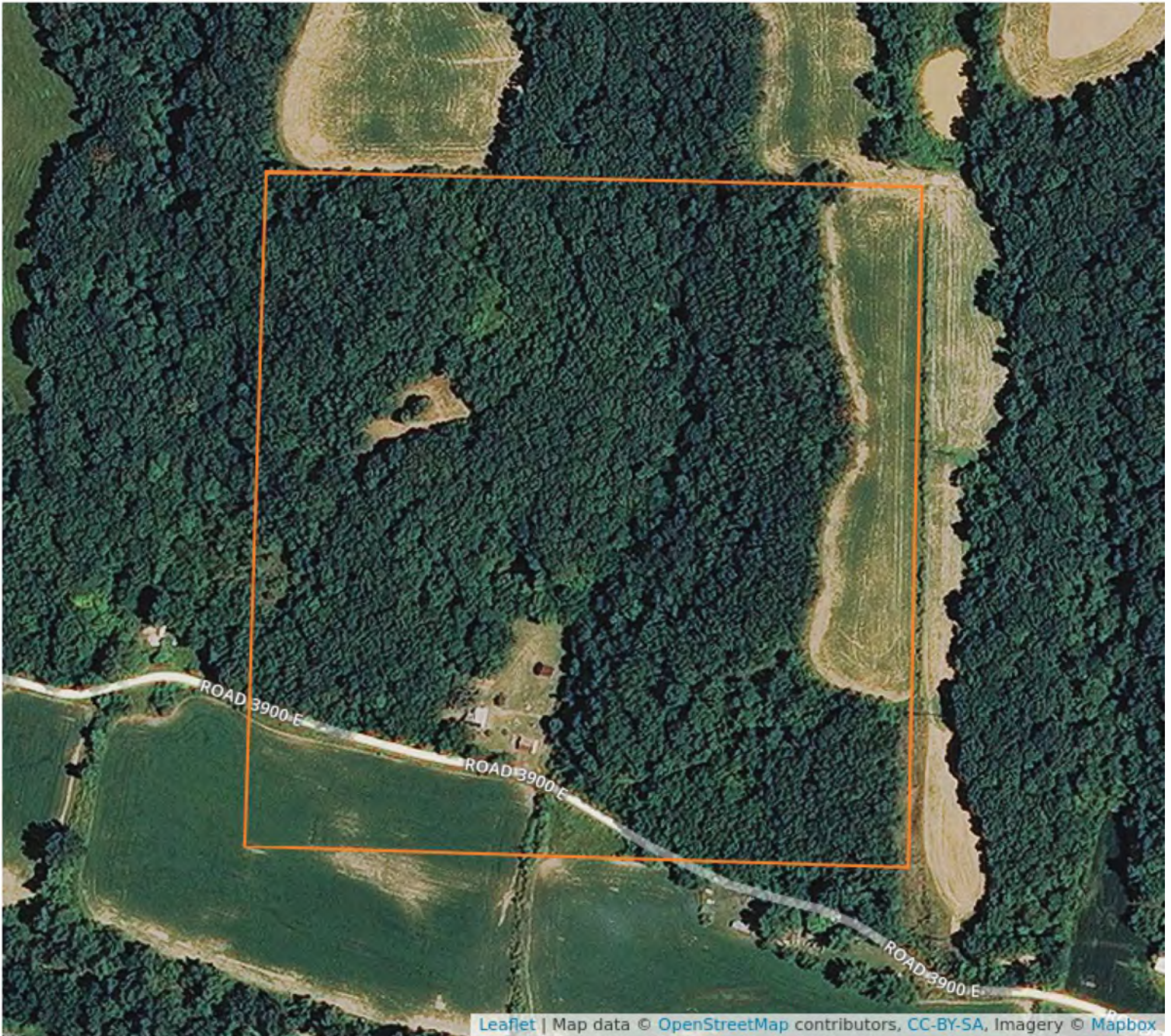


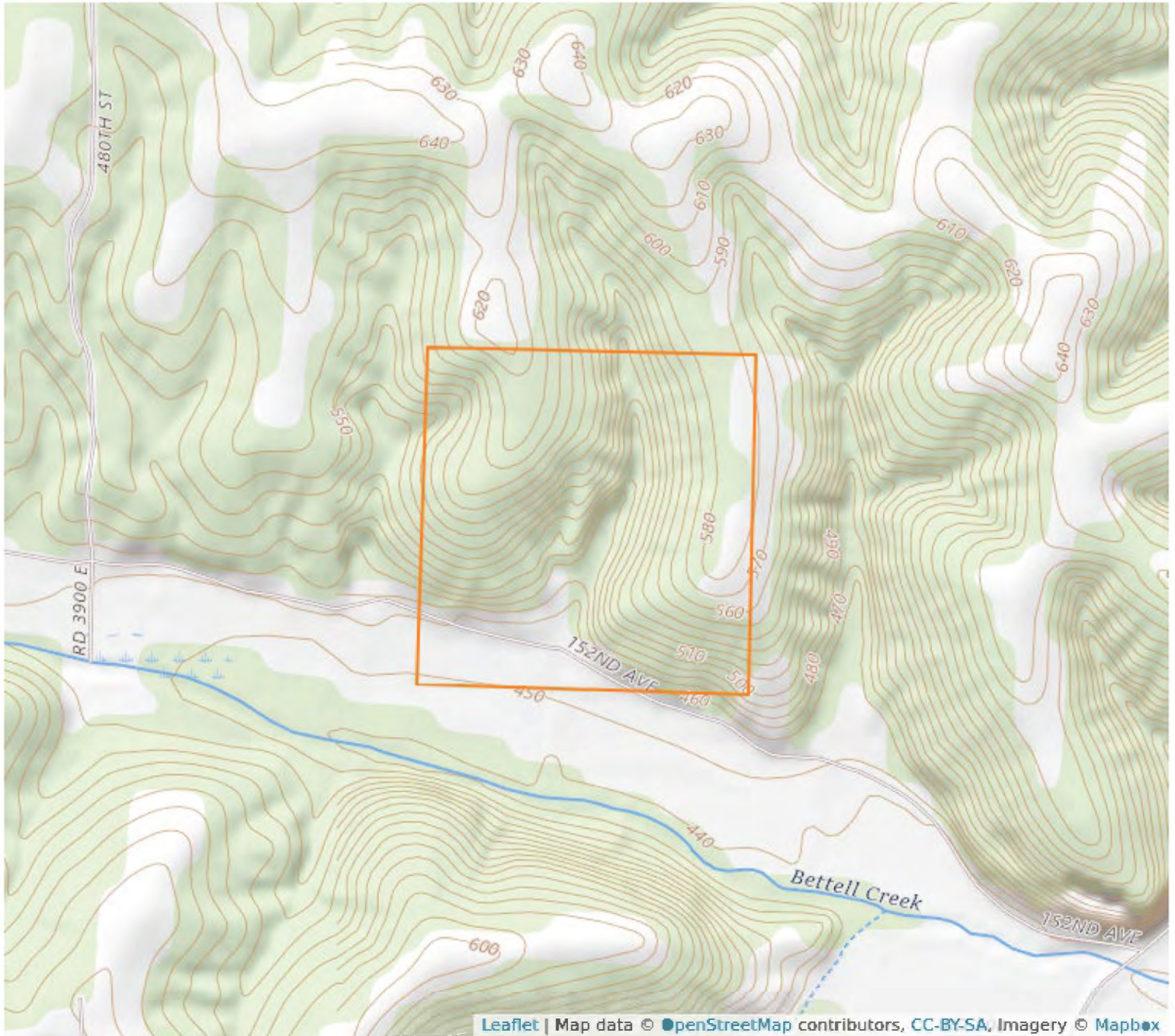
Aerial Map



3 - 7S - 2W
Pike County, Illinois

39°28'33.69" N, 90°37'17.43" W

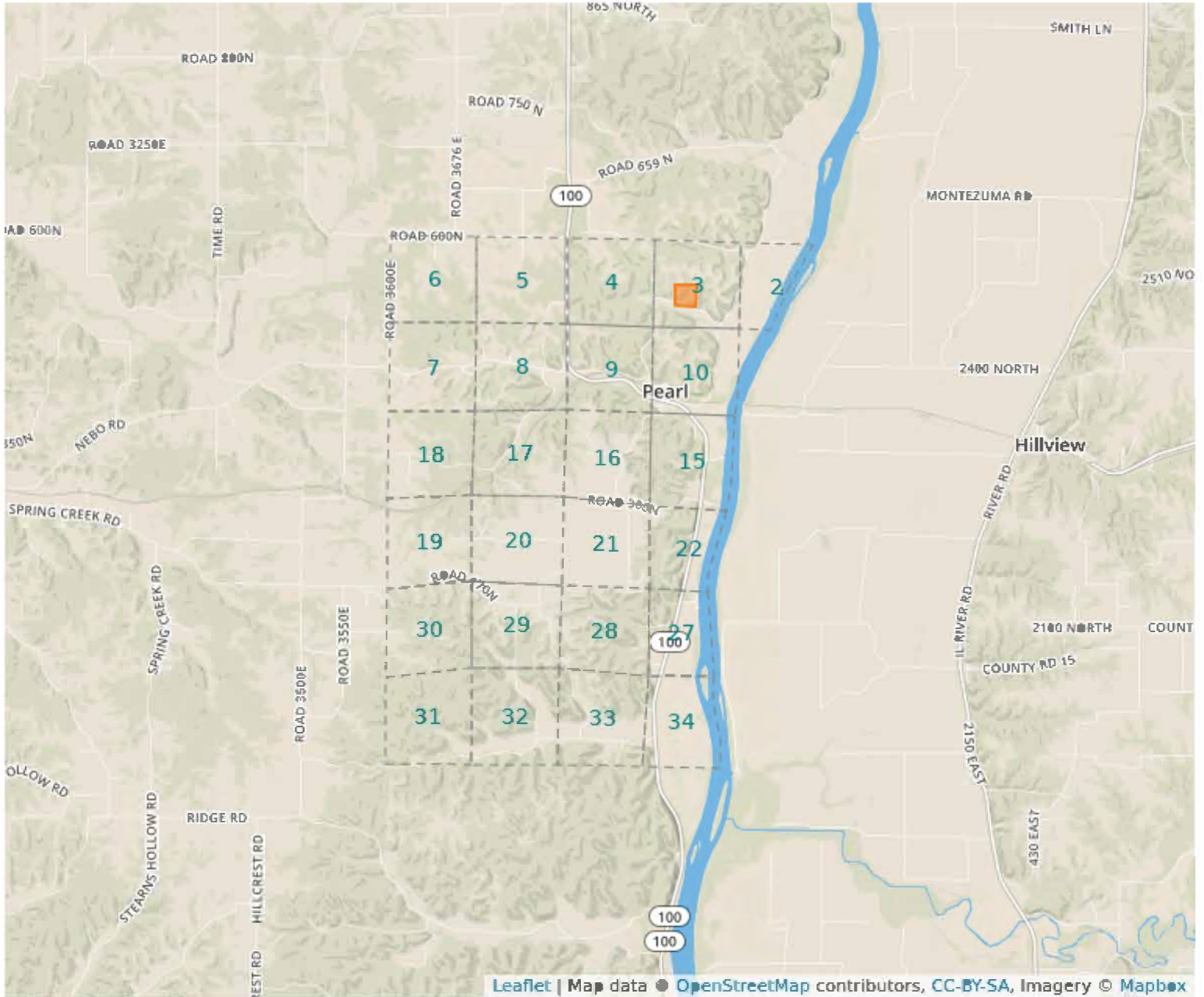
Topography Map



3 - 7S - 2W
Pike County, Illinois

39°28'33.69" N, 90°37'17.43" W

Plat Map



3 - 7S - 2W
Pike County, Illinois

39°28'33.69" N, 90°37'17.43" W

