

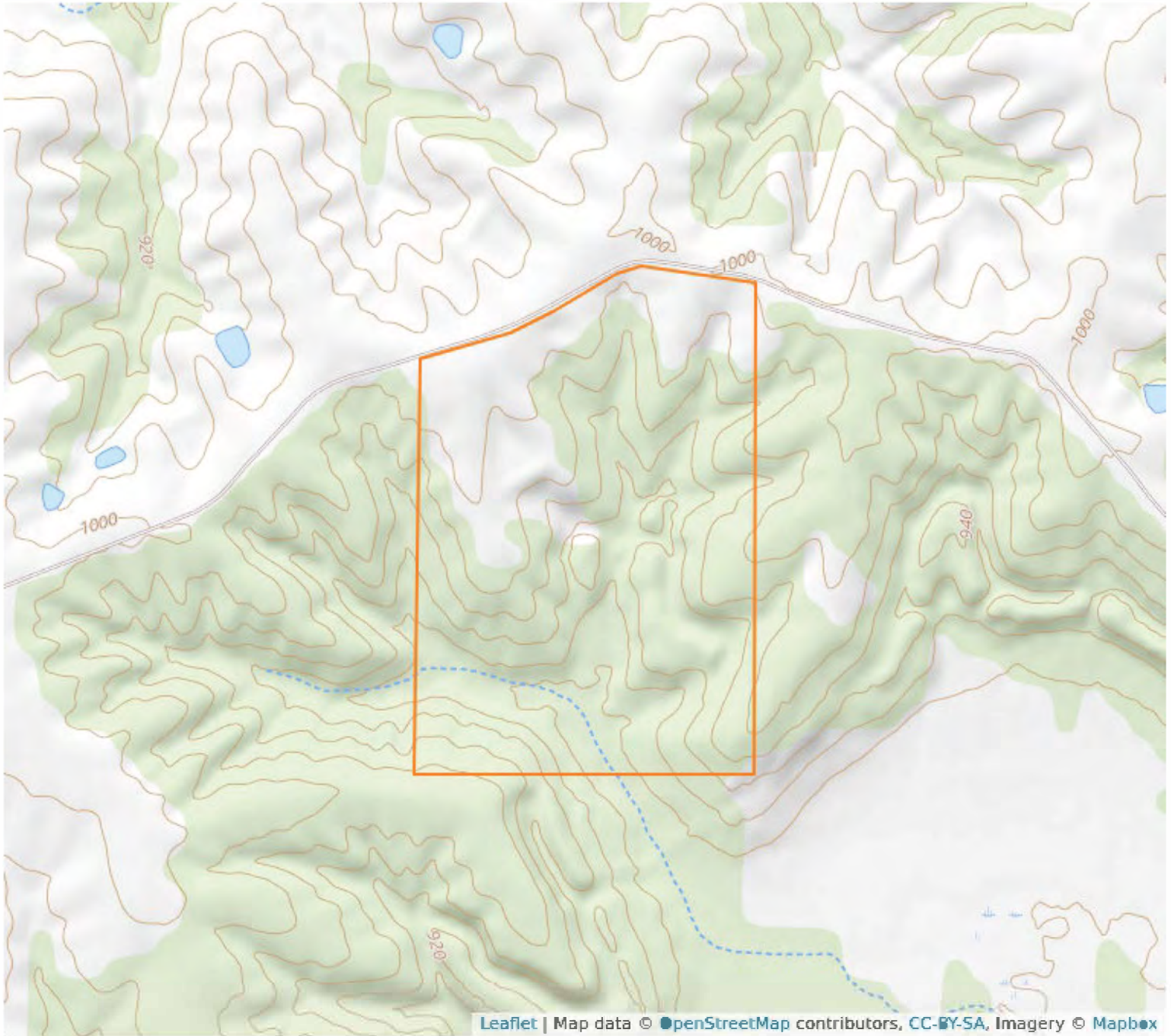
# Aerial Map



**25 - 67N - 18W**  
**Putnam County, Missouri**

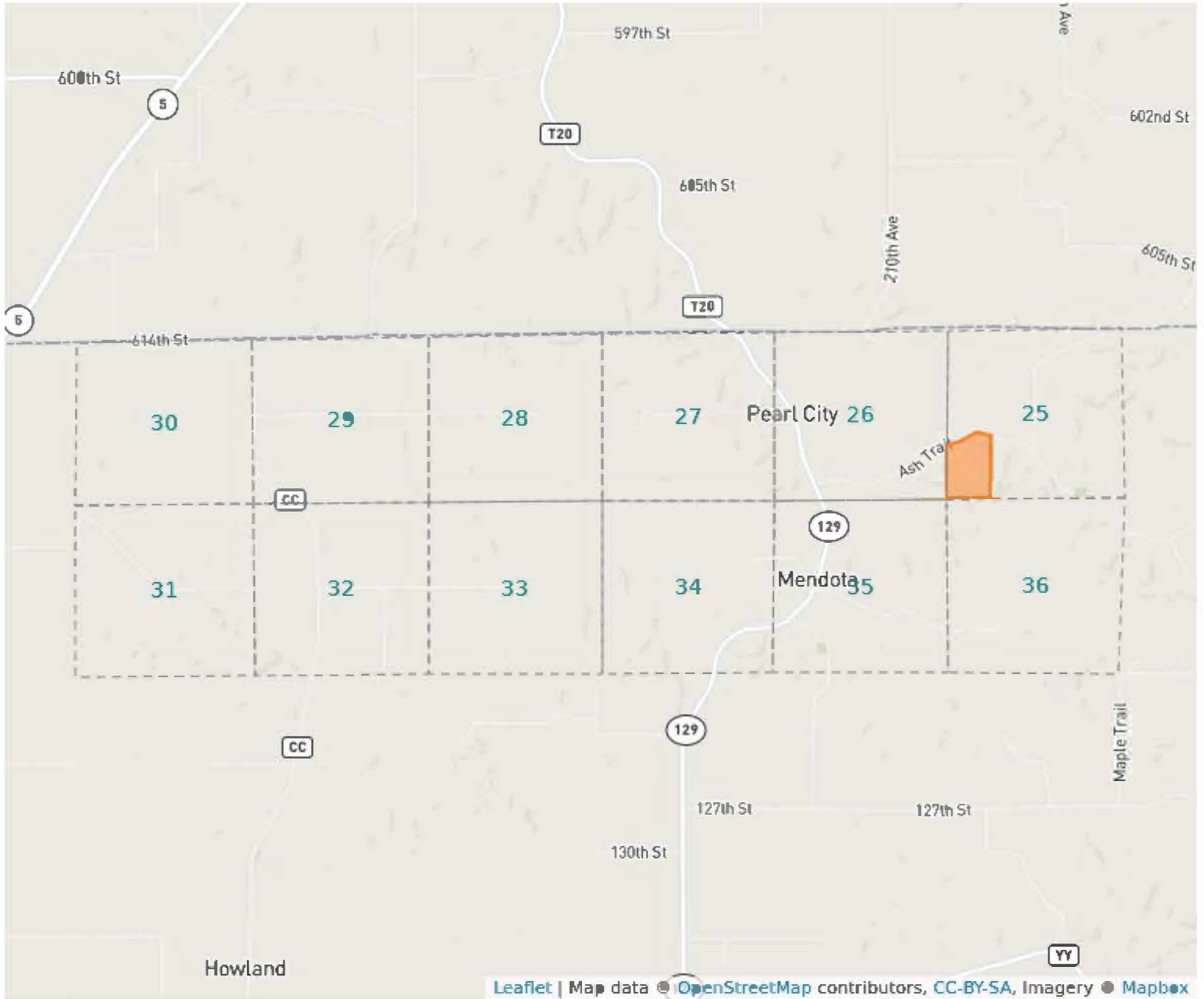
**40°34'36.33" N, 92°52'41.16" W**

## Topography Map



**25 - 67N - 18W**  
**Putnam County, Missouri**  
**40°34'36.33" N, 92°52'41.16" W**

# Plat Map



25 - 67N - 18W

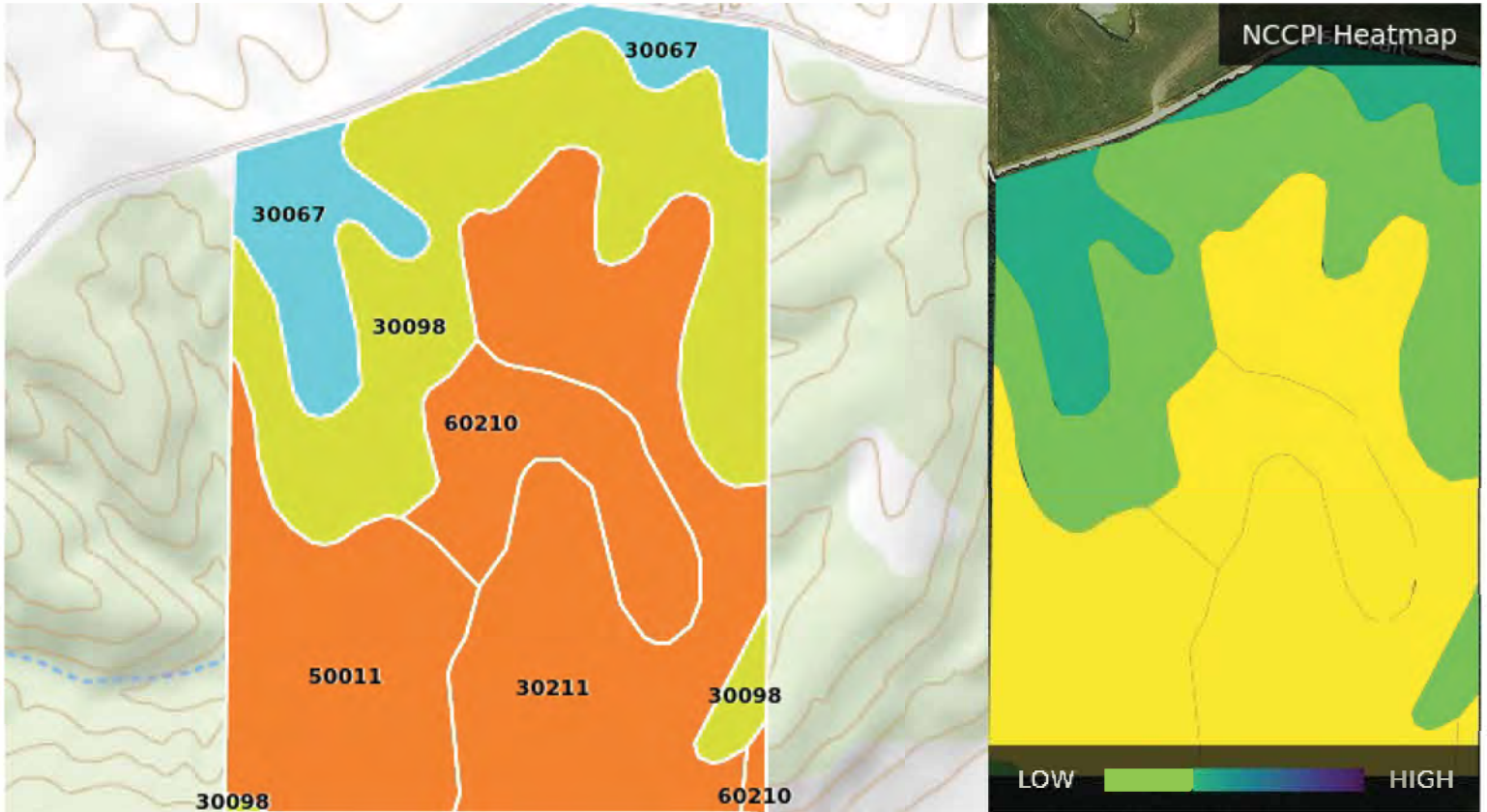
Putnam County, Missouri

40°34'36.33" N, 92°52'41.16" W



# Soil Map – Total Acres

Source: NRCS SSURGO



Code	Description	Acres	% of Field	Soil Class	NCCPI
30211	Vanmeter silty clay loam, 14 to 30% slopes	17.11	30.8%	6	22.48
30098	Keswick loam, 5 to 14% slopes	16.73	30.1%	6	39.78
50011	Winnegan loam, 20 to 35% slopes	9.56	17.2%	6	13.23
30067	Gorin silt loam, 3 to 9% slopes	6.29	11.3%	6	51.77
60210	Putco silty clay loam, 30 to 60% slopes	5.91	10.6%	6	10.1
		<b>55.6</b>			<b>28.09</b>