



169.8 Acres Near Scotts Ford for Sale - Private Access to Meramec River with Tillable & Timber

T R O P H Y
PROPERTIES AND AUCTION
LAND | RECREATIONAL | RESIDENTIAL

www.TrophyPA.com • (855) 573-5263 • leads@trophyhpa.com



PROPERTY ADDRESS:

00 Thurman Lake Road
Cuba, MO 65453

PRICE: \$528,150

ACRES: 169.8

COUNTY: Crawford

PROPERTY HIGHLIGHTS:

- Nearly an entire mile of private access to the Meramec River next to Scotts Ford!
- Incredible fishing and floating opportunities!
- 1.2 acre gravel beach area
- New bridge being built with direct access to property from the south, will be completed soon.
- 20 +/- acres of tillable on the property
- Creek runs through property

PROPERTY DESCRIPTION:

If you want a property with river access, look no further! This property has nearly a mile of private access to the Meramec River, including a 1.2 acre gravel beach! Sitting right next to Scott's Ford, this property offers great floating and fishing opportunities. A new bridge giving you easy access from the south is being built and is nearly completed. Close to the river, is a creek that cuts through the property. The property offers more than just waterfront though, there is great timber and nearly 20 acres of tillable soil on the property.



PRESENTED BY:

PHIL BROWN

Broker/Partner

M: (314) 753-7444

P: (855) 573-5263 x700

E: philbrown@trophyhpa.com

Trophy Properties and Auction

15480 Clayton Road

Suite 101

Ballwin, MO 63011

www.Trophyhpa.com

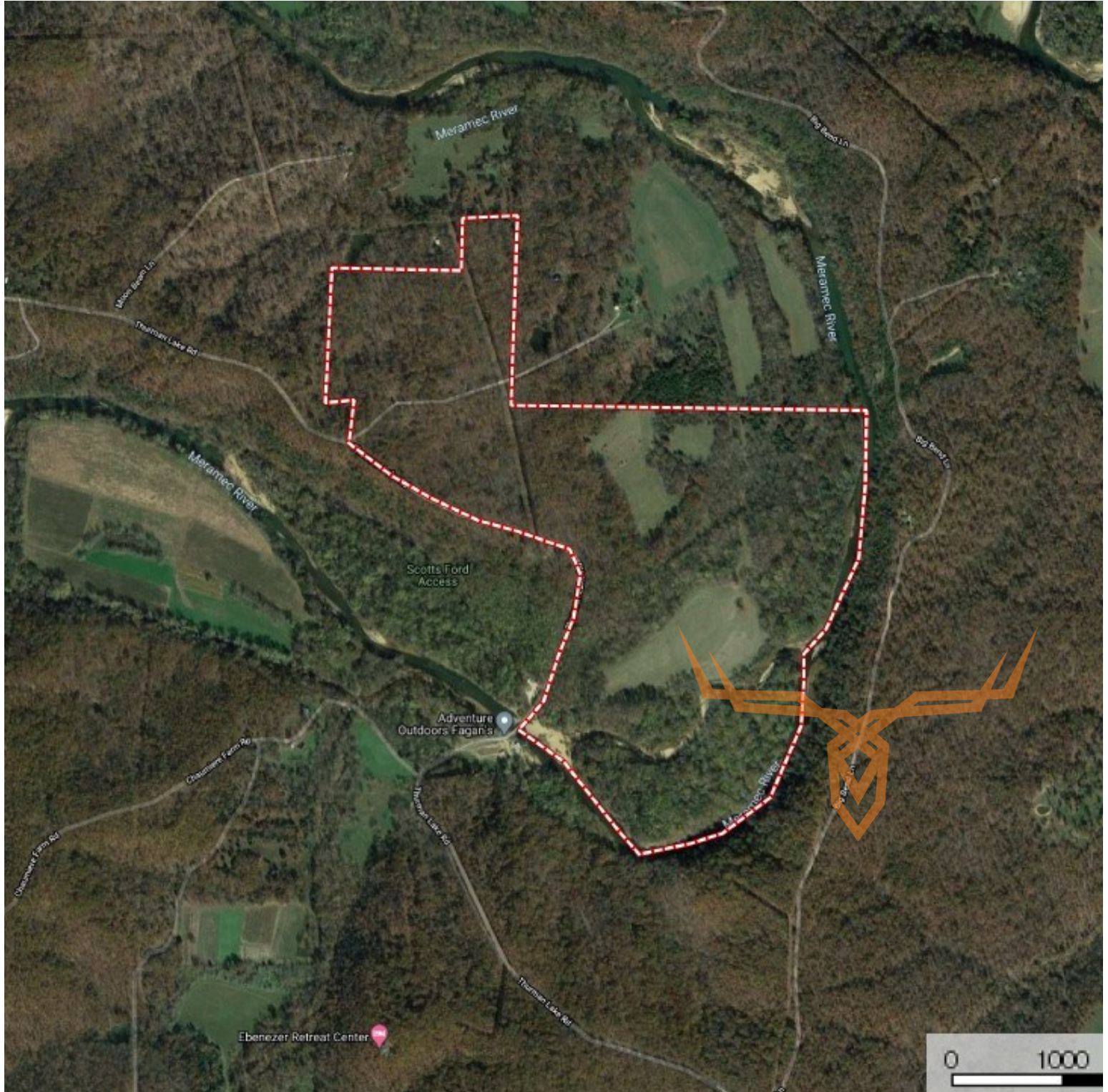
leads@trophyhpa.com



T R O P H Y
PROPERTIES AND AUCTION
LAND | RECREATIONAL | RESIDENTIAL

169.8 Acres Near Scotts Ford for Sale - Private Access to Meramec River with Tillable & Timber

www.TrophyPA.com • (855) 573-5263 • leads@trophy.com



Broker does not guarantee the accuracy of sq. ft., lot size, or other information, buyer is advised to independently verify the accuracy of information through personal inspection and with appropriate professionals