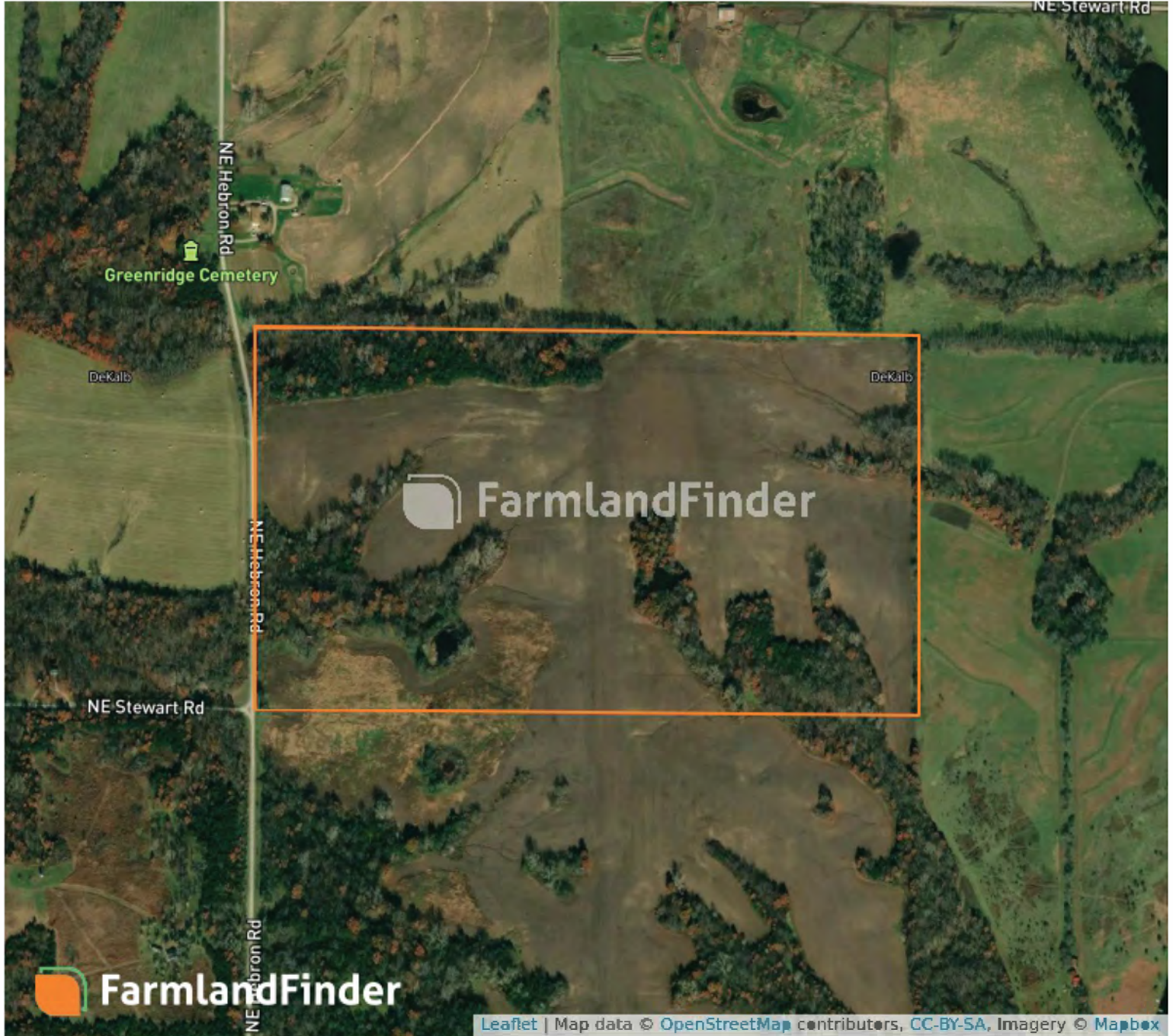


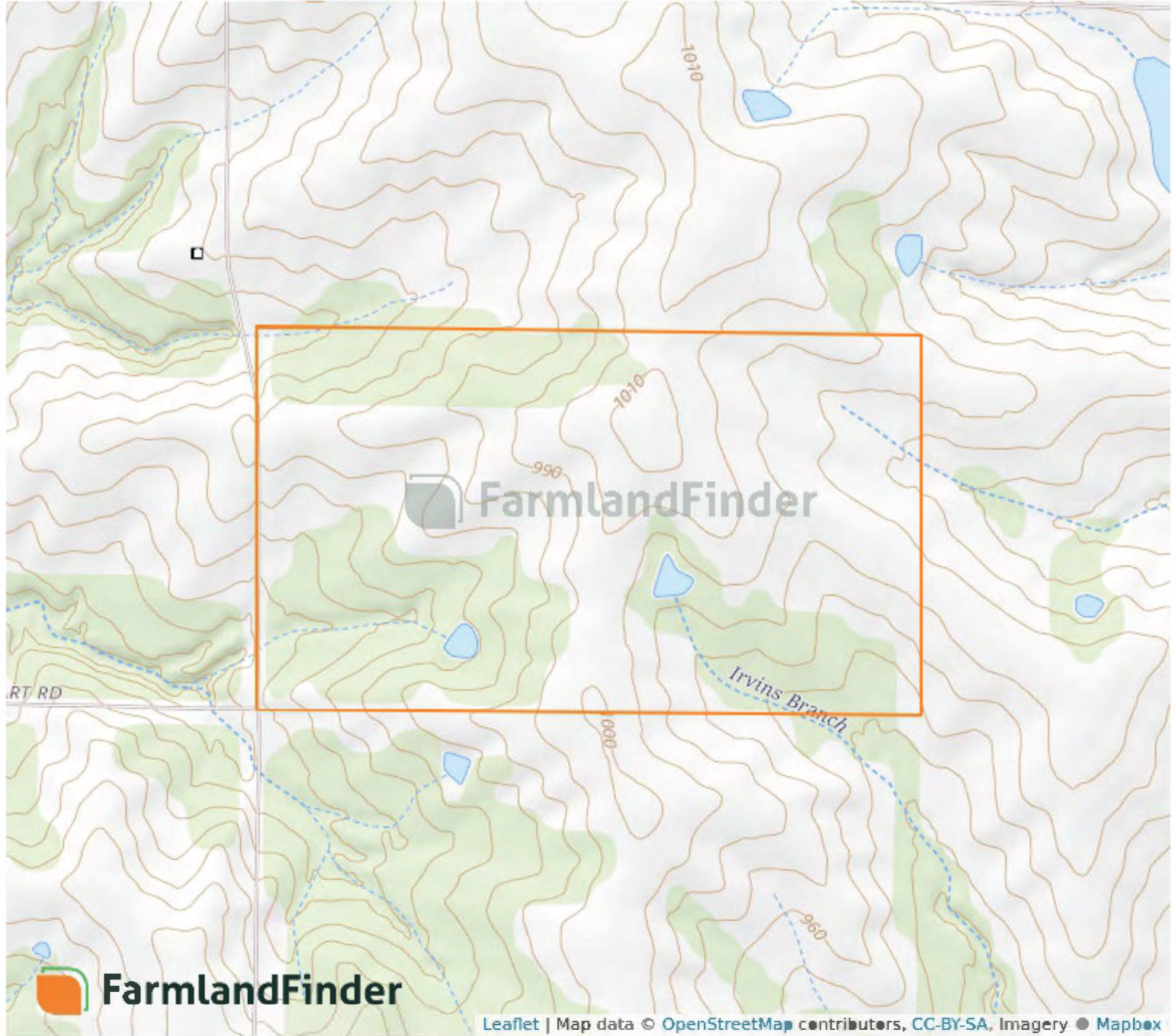
Aerial Map



5 - 59N - 30W
DeKalb County, Missouri

39°57'46.60" N, 94°17'40.01" W

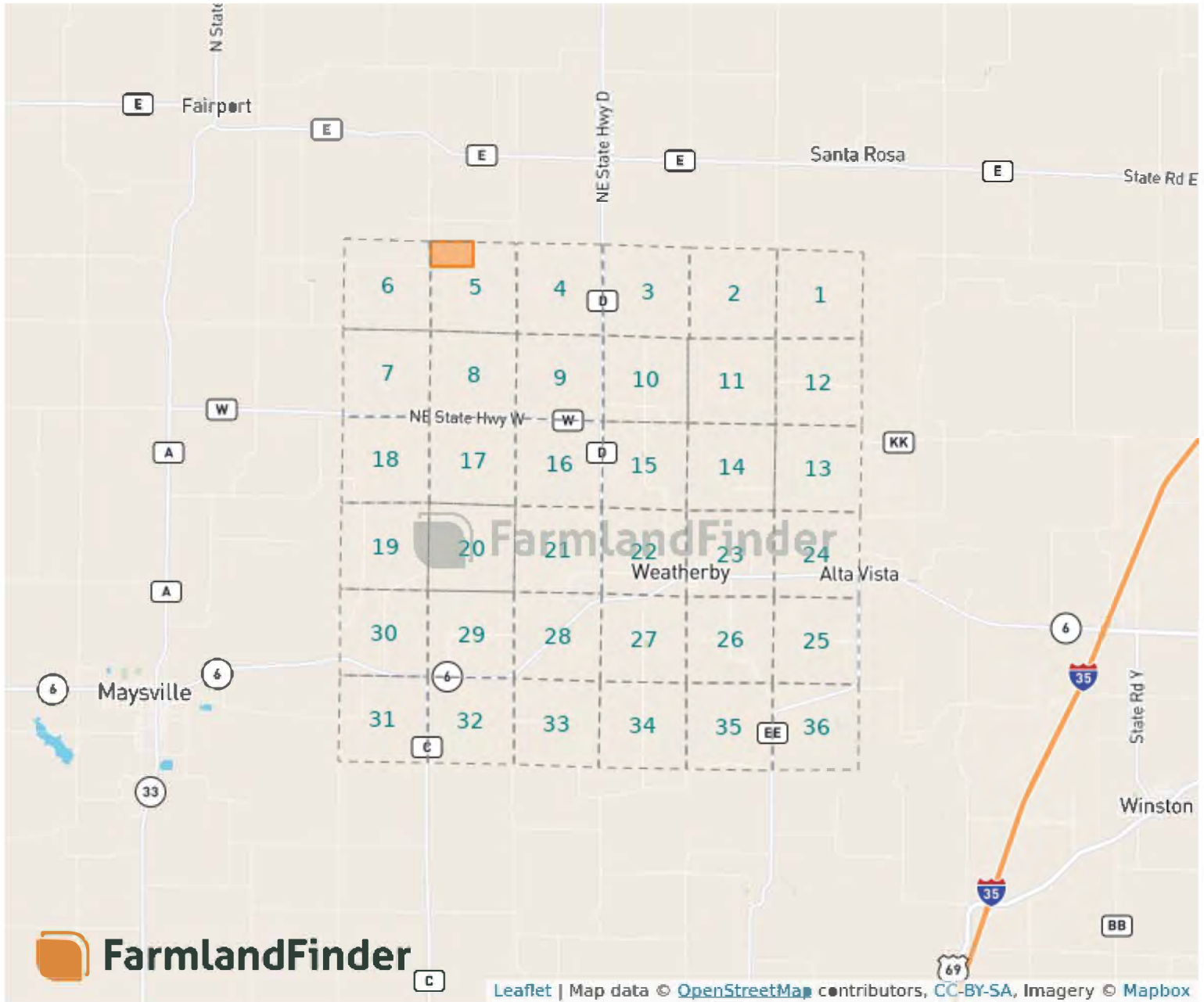
Topography Map



5 - 59N - 30W
DeKalb County, Missouri

39°57'46.60" N, 94°17'40.01" W

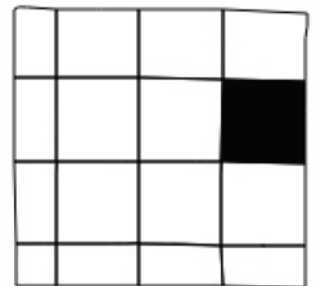
Plat Map



5 - 59N - 30W

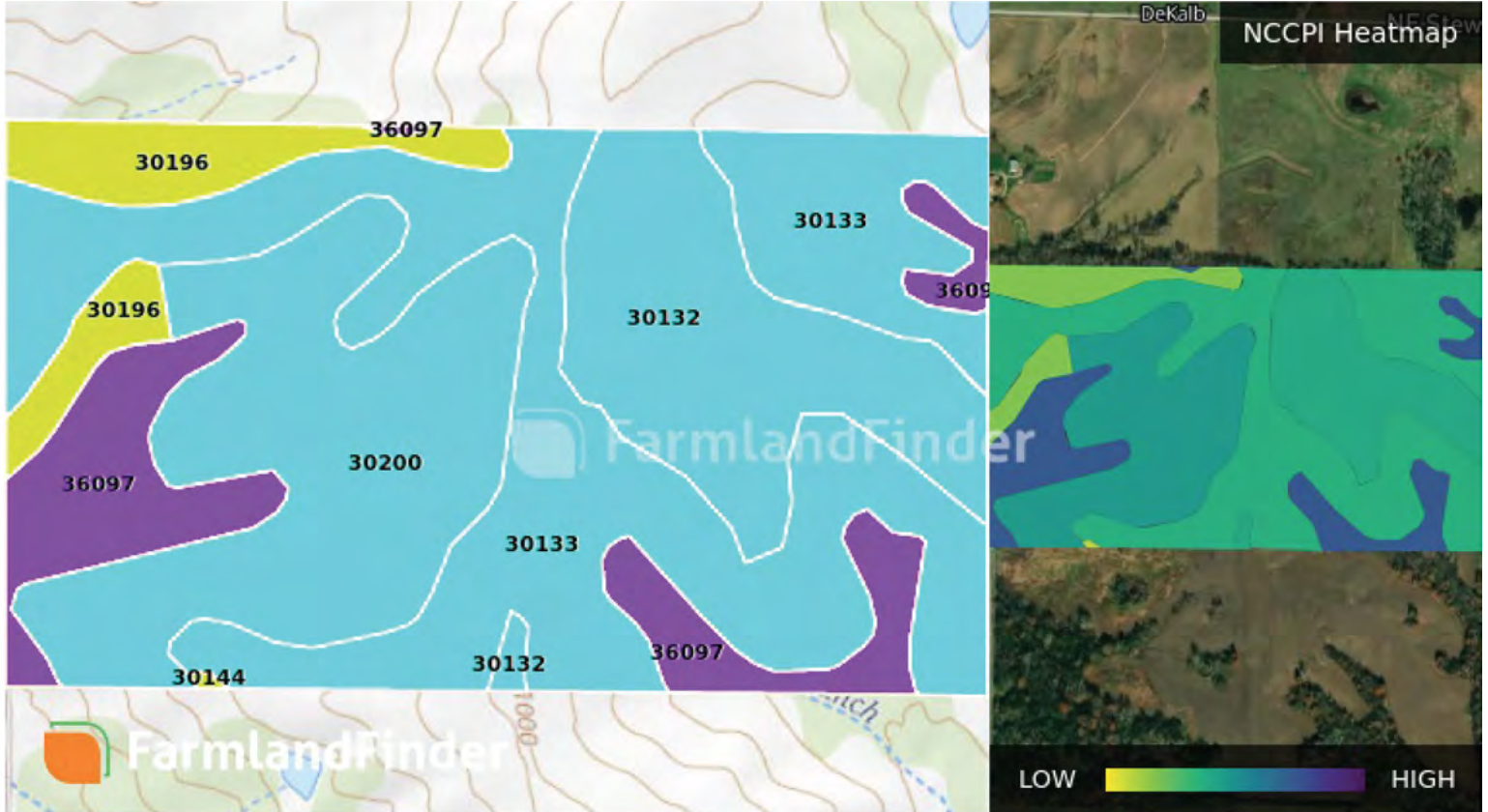
DeKalb County, Missouri

39°57'46.60" N, 94°17'40.01" W



Soil Map – Total Acres

Source: NRCS SSURGO



Code	Description	Acres	% of Field	Soil Class	NCCPI
30133	Lamoni clay loam, 5 to 9% slopes	35.94	39.9%	2	51.03
30200	Shelby loam, 9 to 14% slopes	21.41	23.8%	2	57.63
30132	Lamoni clay loam, 4 to 7% slopes	15.06	16.7%	2	52.74
36097	Zook silty clay loam, 1 to 4% slopes	11.28	12.5%	2	76.32
30196	Shelby clay loam, 9 to 14% slopes	6.27	7%	2	39.02
30144	Lamoni soils, 5 to 9% slopes	0.07	0.1%	2	32.15
		90.03			55.19