



**T R O P H Y**  
PROPERTIES AND AUCTION  
LAND | RECREATIONAL | RESIDENTIAL

# Pike County Illinois Land iAuction - Eisenbath Farms

[www.TrophyPA.com](http://www.TrophyPA.com) • (855) 573-5263 • [leads@trophyapa.com](mailto:leads@trophyapa.com)



BIDDING ENDS TUESDAY, MAY 4TH AT 10:00 AM  
SEE FULL TERMS & CONDITIONS AT [WWW.TROPHYPA.COM](http://WWW.TROPHYPA.COM)

**PROPERTY ADDRESS:**

00 Co. Hwy 13  
Pittsfield, IL 62363

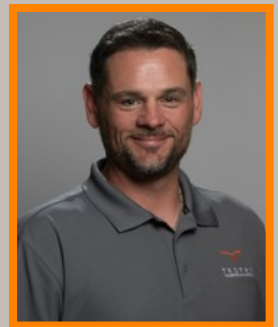
**ACRES:** 44  
**COUNTY:** Pike

**PROPERTY DESCRIPTION:**

As we're looking to buy land closer to our home, we have decided to sell our 44± acres at an internet-only auction. Sellers: Steve and Dianne Eisenbath.

**Bidding ends Tuesday, May 4, 2021 at 10:00 AM.**

These 44± gently rolling acres are conveniently located along county highway 13 just 1.4 miles east of El Dara. The farm consists of approximately 6 acres of cropland with the balance being in woods and grass. The Bull Run creek meanders through the property making for a great travel corridor with a 1-acre food plot alongside. There are good bedding areas throughout and a pond surrounded by crop fields making this tract of land a great holding spot for mature bucks and doe. If you're looking for a good hunting spot or a location to build a new home be sure to check out this easily accessible farm in Pike County, IL.



**PRESENTED BY:**

**JASON WALLINGFORD**

**President - Auction Division**

M: (314) 882-6971

P: (855) 573-5263 x702

E: [jasonw@trophyapa.com](mailto:jasonw@trophyapa.com)

**Trophy Properties and Auction**

15480 Clayton Road

Suite 101

Ballwin, MO 63011

[www.Trophyapa.com](http://www.Trophyapa.com)

[leads@trophyapa.com](mailto:leads@trophyapa.com)

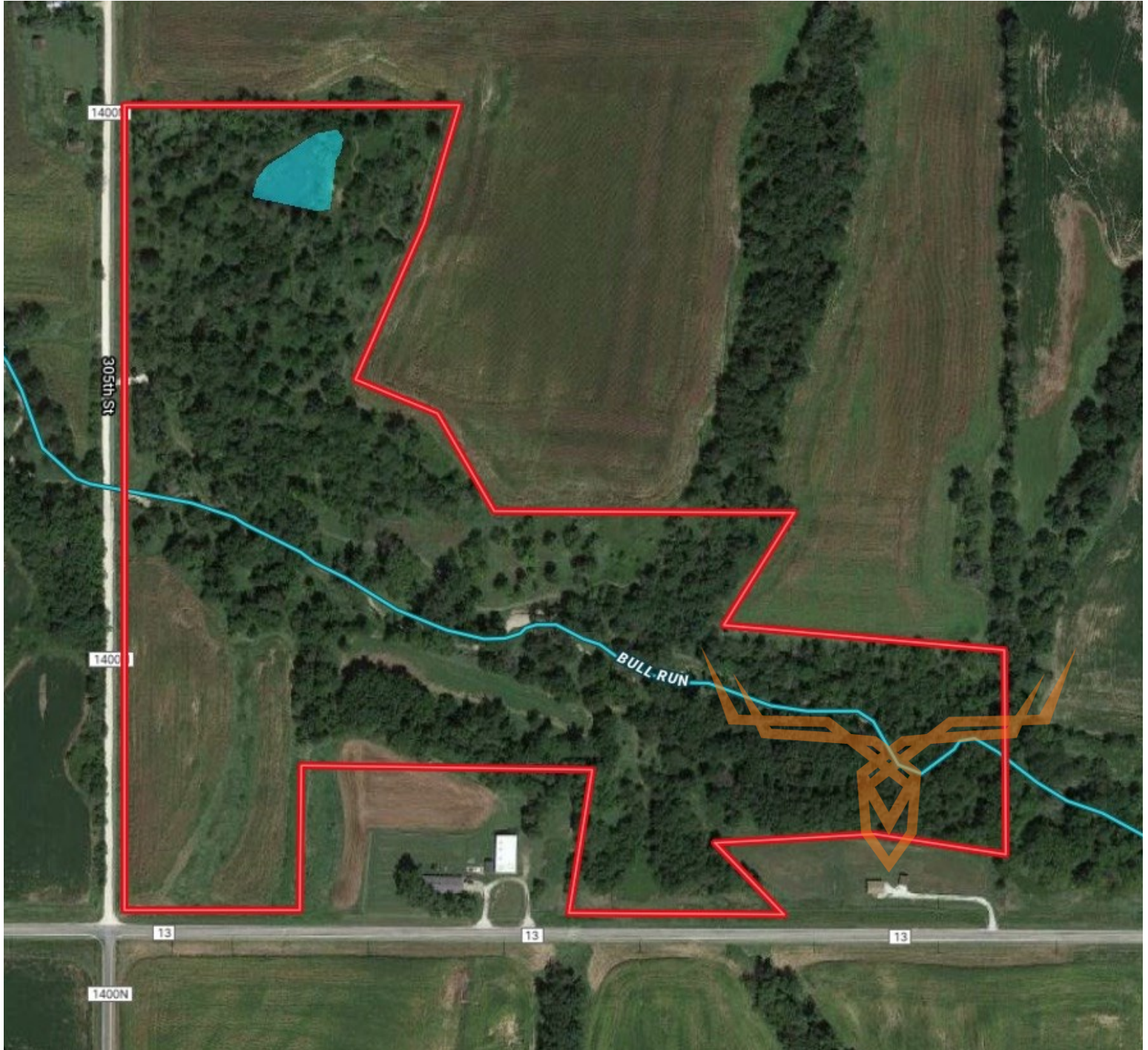




**T R O P H Y**  
PROPERTIES AND AUCTION  
LAND | RECREATIONAL | RESIDENTIAL

# Pike County Illinois Land iAuction - Eisenbath Farms

[www.TrophyPA.com](http://www.TrophyPA.com) • (855) 573-5263 • [leads@trophyPA.com](mailto:leads@trophyPA.com)



The information is believed to be accurate; however, no liability for its accuracy, errors or omissions is assumed. All lines are drawn on maps, photographs, etc. are approximate. Buyers should verify the information to their satisfaction. There are no expressed or implied warranties pertaining to this property. Both real estate (including all improvements, if any) is being sold As Is, Where Is with NO warranties expressed or implied. Please make all inspections and have financing arranged prior to the end of bidding.