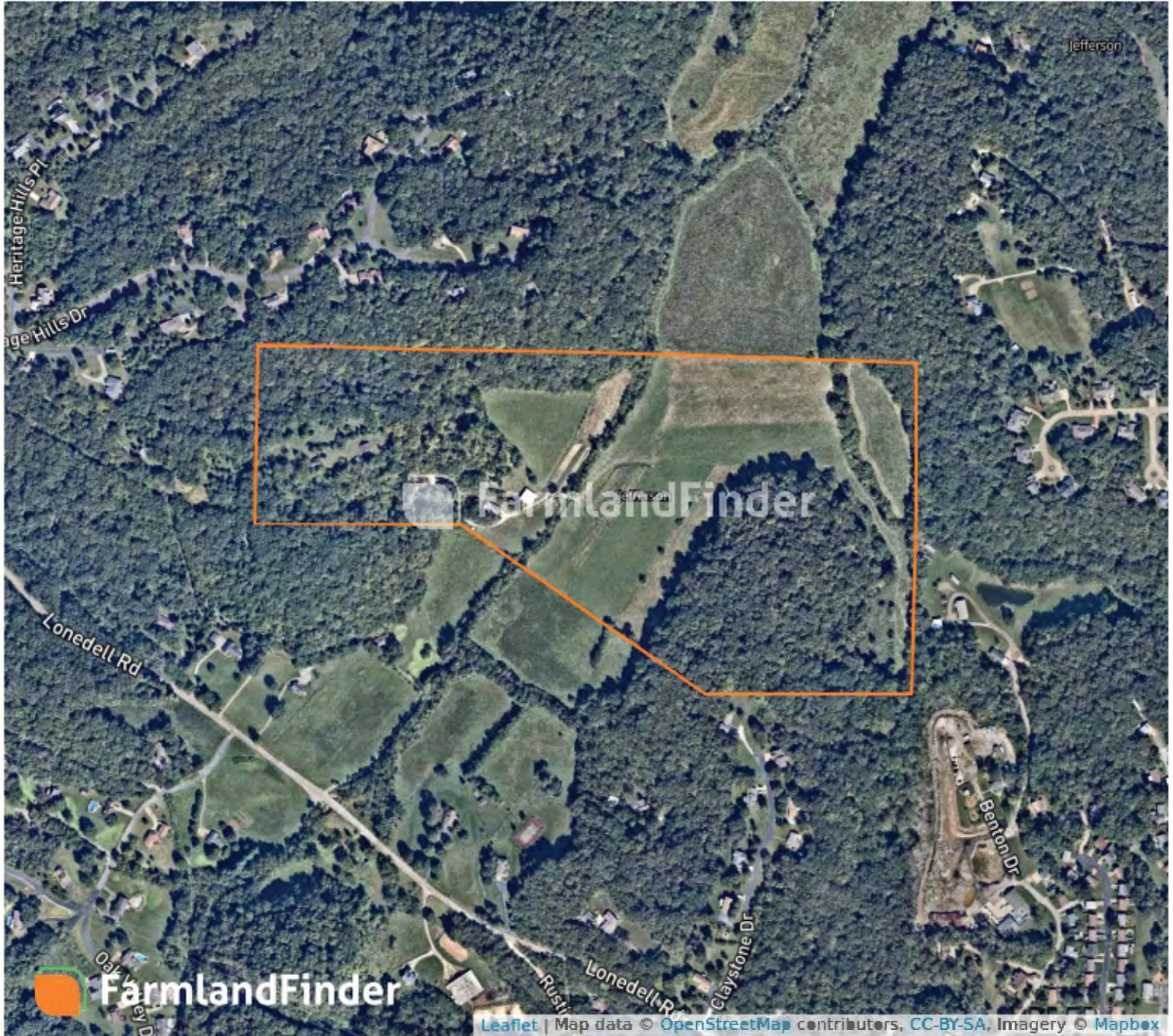


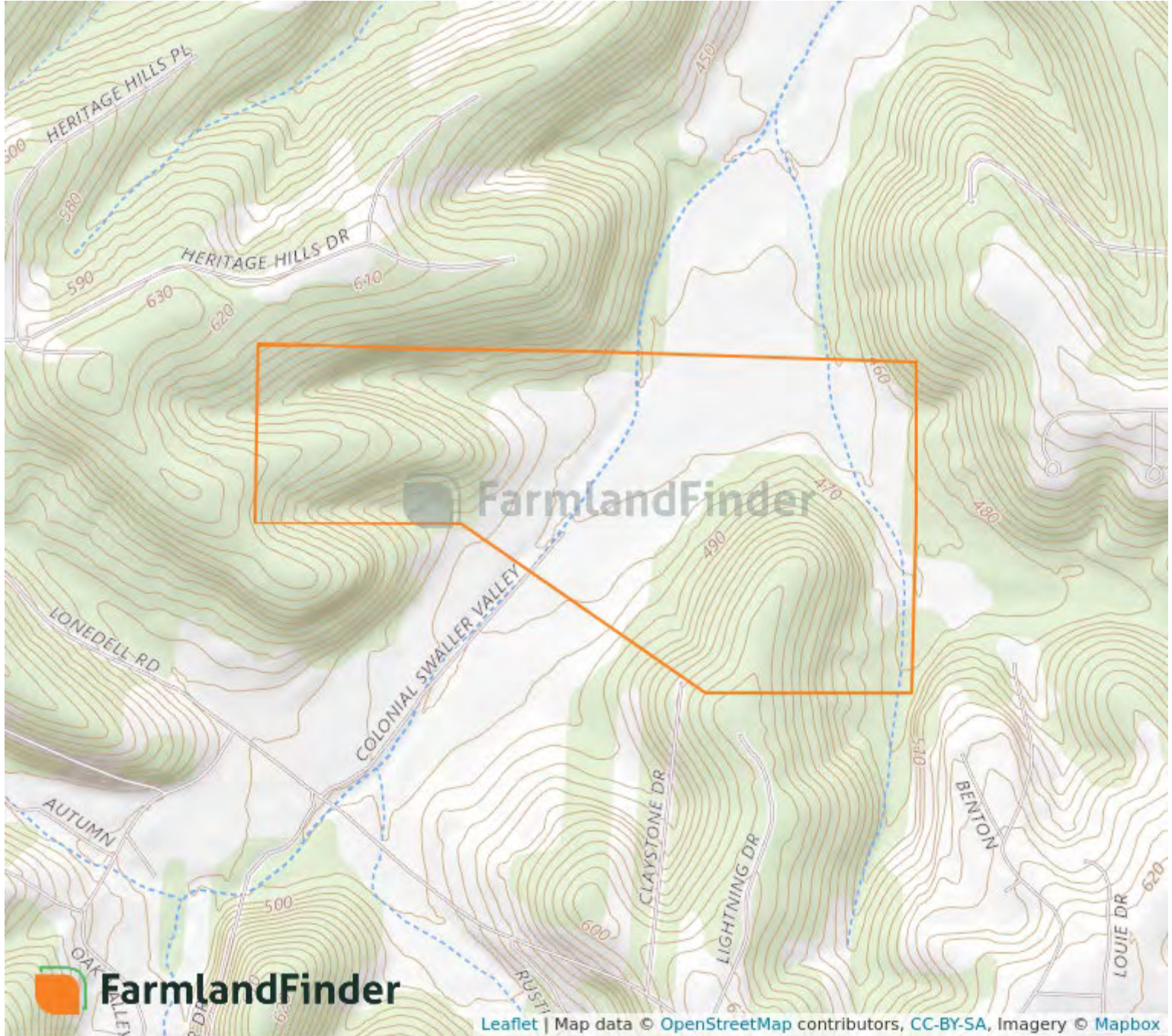
Aerial Map



26 - 43N - 5E
Jefferson County, Missouri

38°26'26.62" N, 90°25'23.23" W

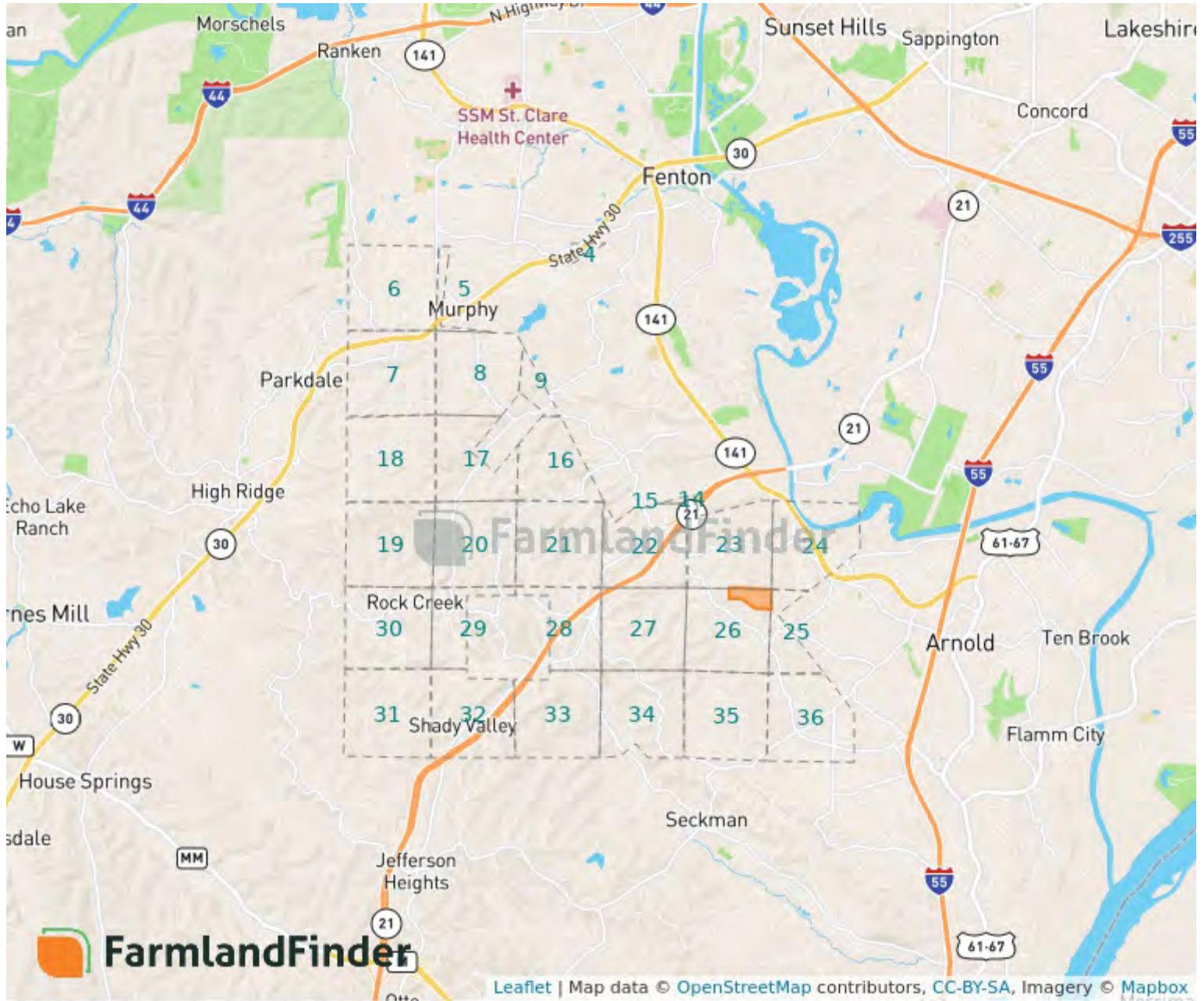
Topography Map



26 - 43N - 5E
Jefferson County, Missouri

38°26'26.62" N, 90°25'23.23" W

Plat Map



26 - 43N - 5E

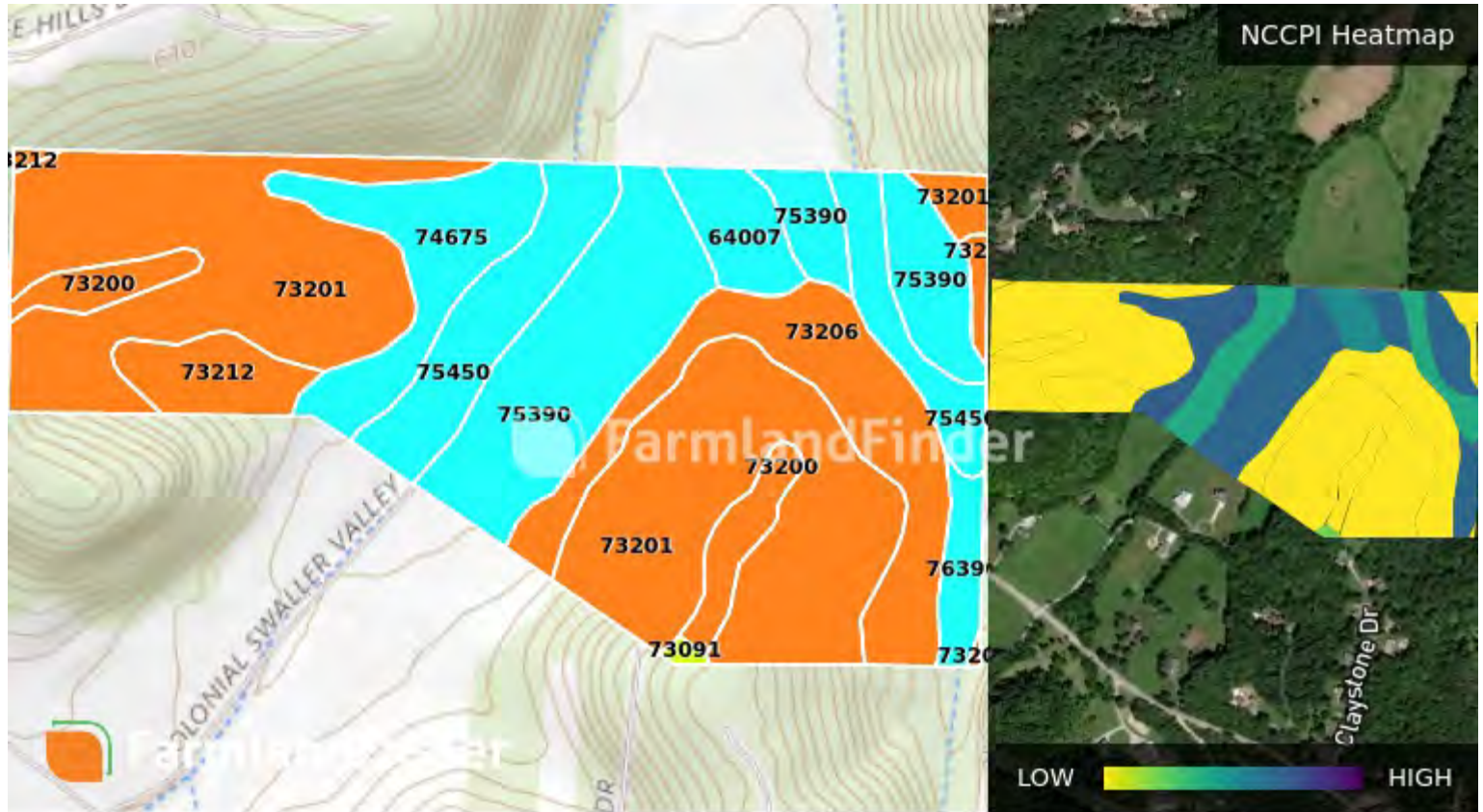
Jefferson County, Missouri

38°26'26.62" N, 90°25'23.23" W



Soil Map – Total Acres

Source: NRCS SSURGO



Code	Description	Acres	% of Field	Soil Class	NCCPI
73201	Sonsac gravelly silt loam, 15 to 40% slopes	25.2	40.2%	8	5.53
75390	Razort silt loam, 0 to 2% slopes	11.06	17.7%	8	72.17
73206	Useful silt loam, 15 to 40% slopes	7.2	11.5%	8	11.98
75450	Bloomsdale silt loam, 0 to 3% slopes	6.33	10.1%	8	53.3
74675	Horsecreek silt loam, 2 to 5% slopes	4.7	7.5%	8	73.8
73212	Gasconade-Rock outcrop complex, 15 to 50% slopes	2.56	4.1%	8	1.25
73200	Sonsac gravelly silt loam, 3 to 15% slopes	2.38	3.8%	8	23.89
64007	Freeburg silt loam, 0 to 2% slopes	1.89	3%	8	62.3
76390	Razort silt loam, 1 to 3% slopes	1.23	2%	8	72.17
73091	Useful silt loam, 8 to 15% slopes	0.14	0.2%	8	38.88
		62.67			31.64