



Callaway County Missouri Land iAuction

T R O P H Y
PROPERTIES AND AUCTION
LAND | RECREATIONAL | RESIDENTIAL

www.TrophyPA.com • (855) 573-5263 • leads@trophyapa.com



BIDDING ENDS THURSDAY, MAY 13TH AT 10:00 AM
SEE FULL TERMS & CONDITIONS AT WWW.TROPHYPA.COM

PROPERTY ADDRESS:

00 County Road 155
Williamsburg, MO 63388

ACRES: 114.73

COUNTY: Callaway

PROPERTY DESCRIPTION:

Fantastic opportunity to own 114.73 secluded surveyed acres of great hunting and recreation just minutes south of I-70.

Bidding ends Thursday, May 13, 2021 at 10:00 AM.

Open House Saturday, April 24th, 10 AM to Noon.

These 114.73 gently rolling to rolling surveyed acres are conveniently located 11 miles south of Williamsburg and an easy 1-hour drive from Wentzville. This recreational paradise features ATV/walking trails, food plots, camper, storage container, mature hardwoods, deer, turkey, and other small game. If you're looking for a turn-key hunting and recreational farm be sure to give this Callaway County farm a good look. Setup a private showing today!



PRESENTED BY:

DAVID CONWAY

Land & Residential Specialist

M: (314) 910-9634

P: (855) 573-5263 x747

E: dconway@trophyapa.com

Trophy Properties and Auction

15480 Clayton Road

Suite 101

Ballwin, MO 63011

www.Trophyapa.com

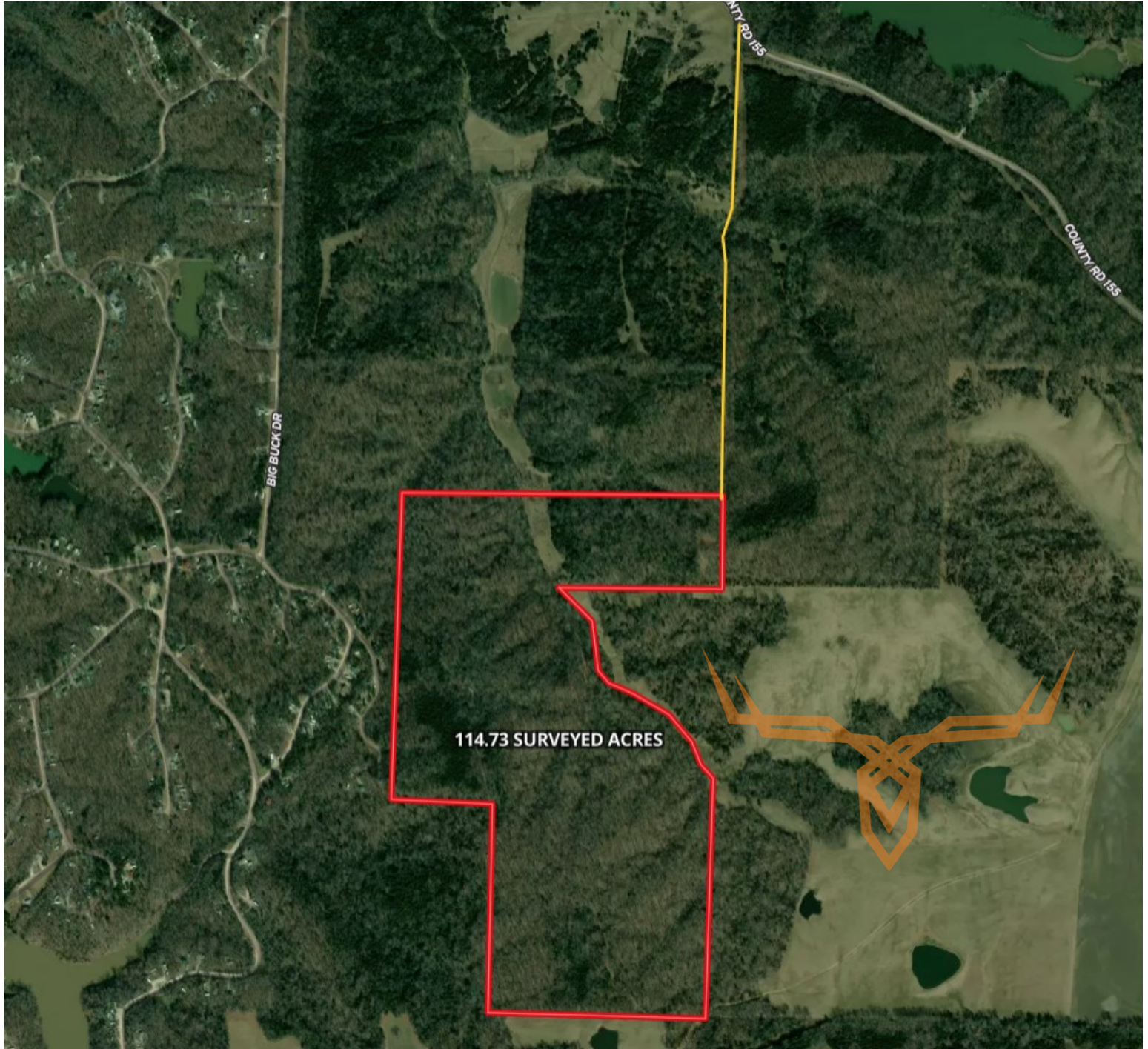
leads@trophyapa.com



Callaway County Missouri Land iAuction

T R O P H Y
PROPERTIES AND AUCTION
LAND | RECREATIONAL | RESIDENTIAL

www.TrophyPA.com • (855) 573-5263 • leads@trophy.com



The information is believed to be accurate; however, no liability for its accuracy, errors or omissions is assumed. All lines are drawn on maps, photographs, etc. are approximate. Buyers should verify the information to their satisfaction. There are no expressed or implied warranties pertaining to this property. Both real estate (including all improvements, if any) is being sold As Is, Where Is with NO warranties expressed or implied. Please make all inspections and have financing arranged prior to the end of bidding.