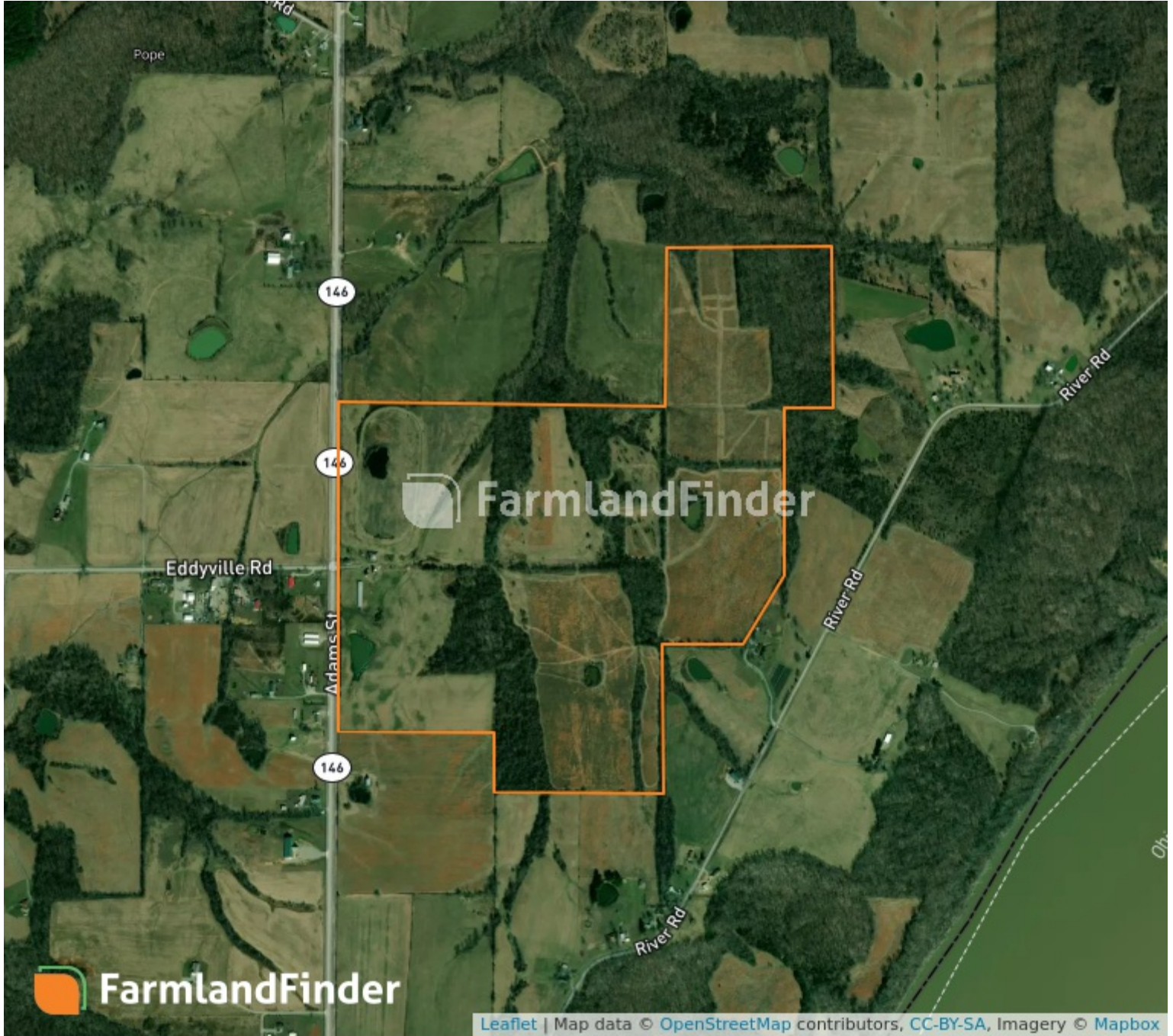


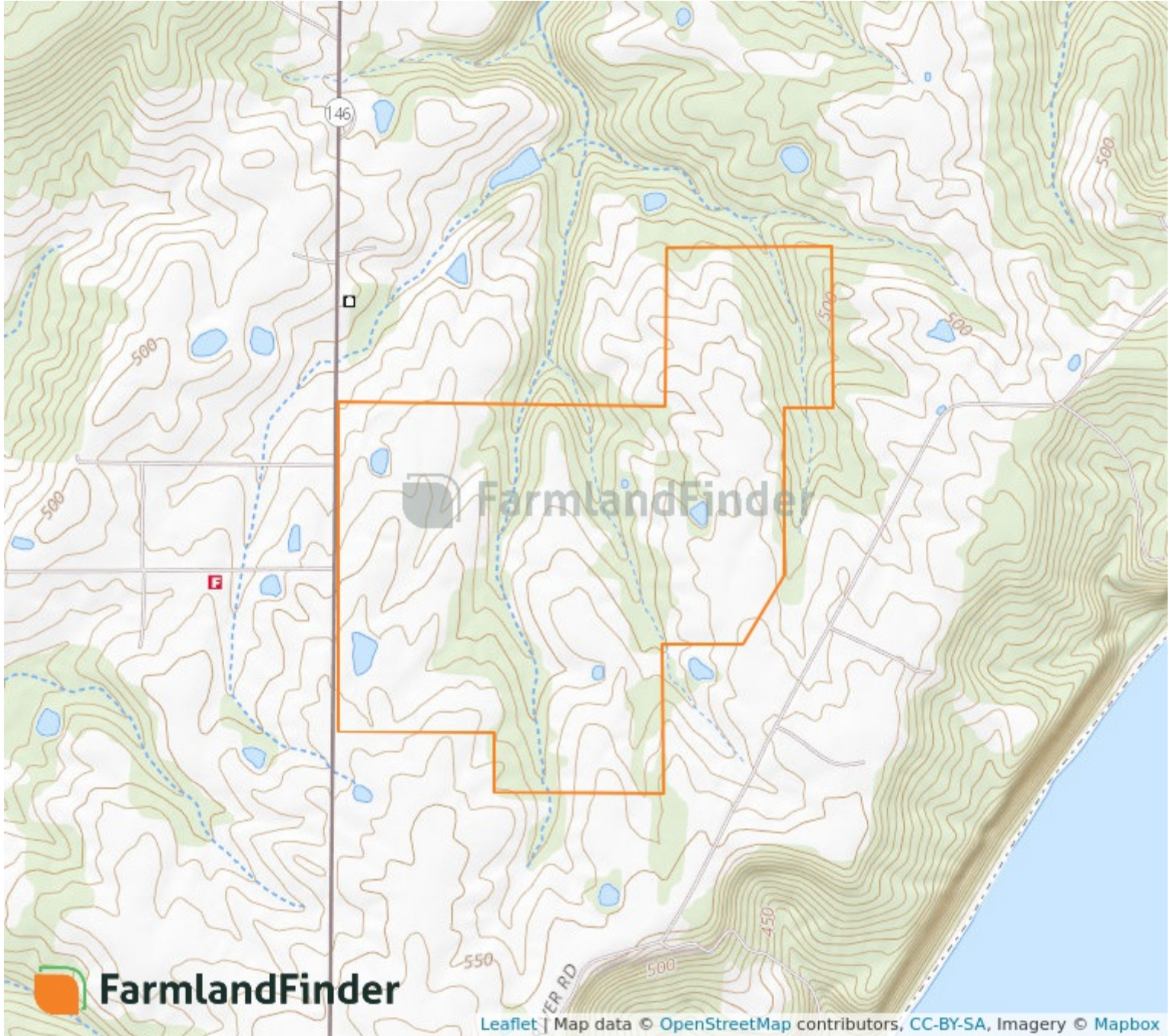
Aerial Map



7 - 13S - 7E
Pope County, Illinois

37°24'12.22" N, 88°28'57.43" W

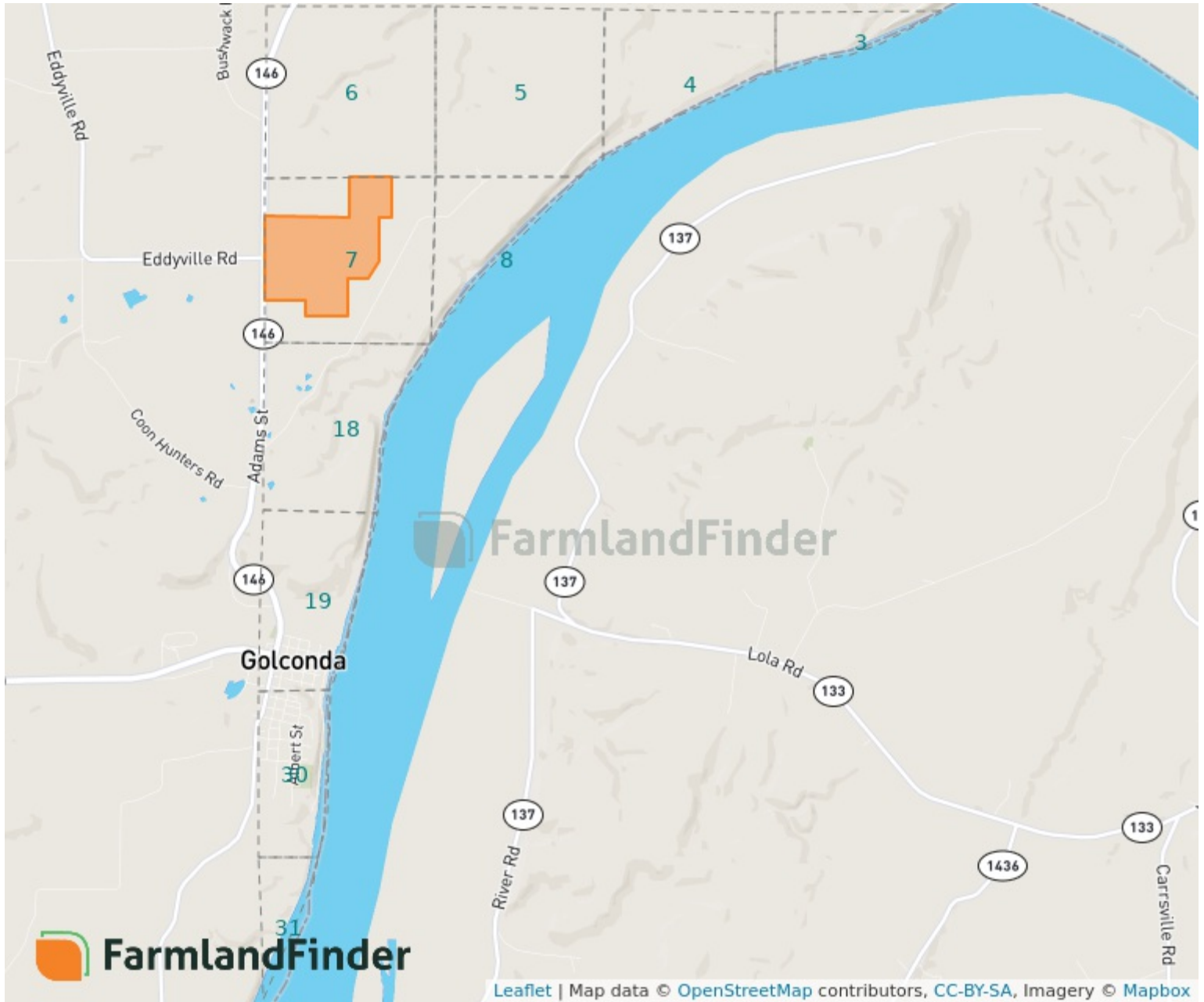
Topography Map



7 - 13S - 7E
Pope County, Illinois

37°24'12.22" N, 88°28'57.43" W

Plat Map



7 - 13S - 7E

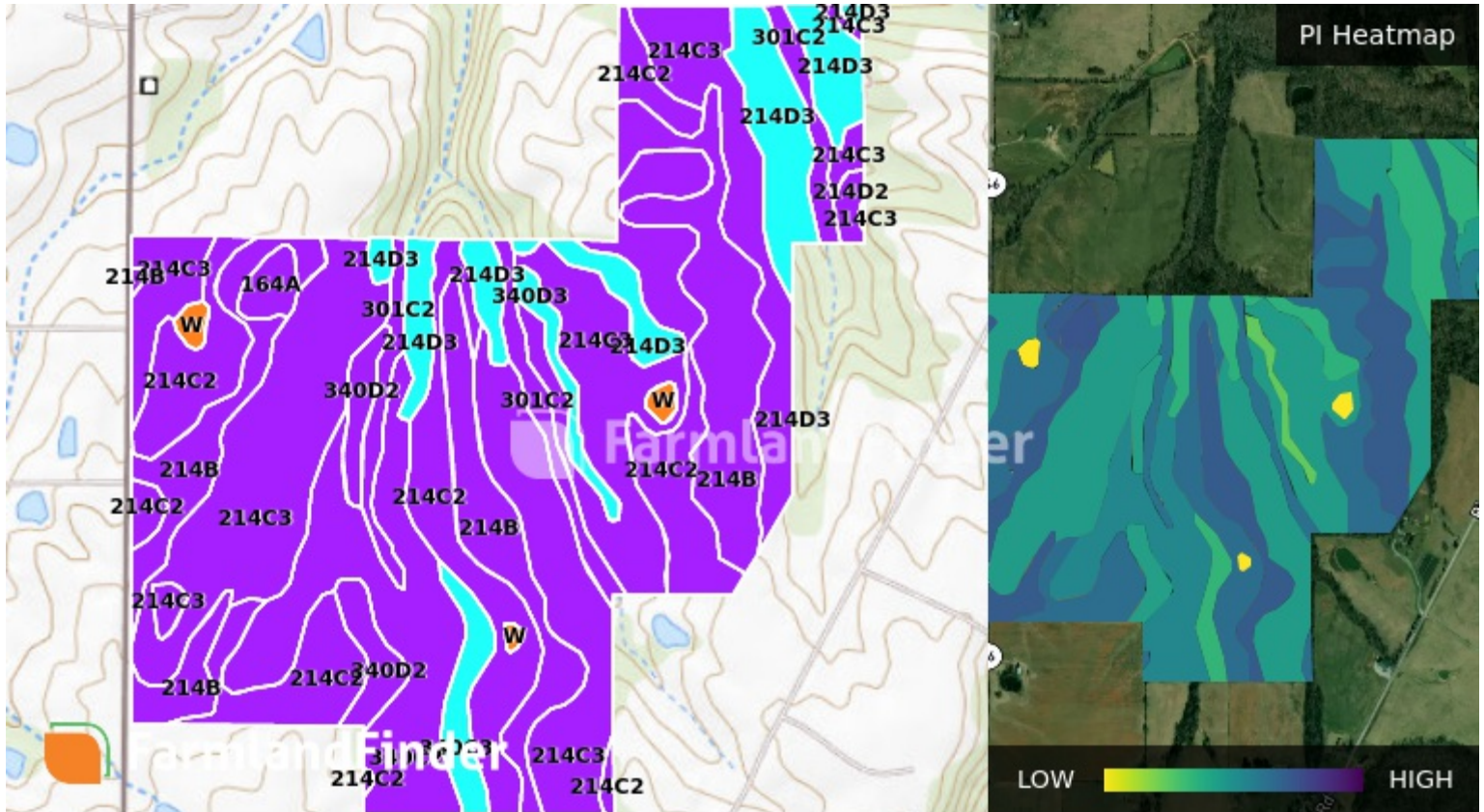
Pope County, Illinois

37°24'12.22" N, 88°28'57.43" W



Soil Map – Total Acres

Source: NRCS SSURGO



Code	Description	Acres	% of Field	Soil Class	PI
214C3	Hosmer silt loam, 5 to 10% slopes	88.28	33.8%	4	77.83
214C2	Hosmer silt loam, 5 to 10% slopes	50.68	19.4%	3	94.14
214B	Hosmer silt loam, 2 to 5% slopes	44.06	16.8%	2	103.99
340C2	Zanesville silt loam, 5 to 10% slopes	25.83	9.9%	3	84.28
214D3	Hosmer silt loam, 10 to 18% slopes	22.6	8.6%	6	70.53
301C2	Grantsburg silt loam, 5 to 10% slopes	10.95	4.2%	3	91.45
340D2	Zanesville silt loam, 10 to 18% slopes	5.99	2.3%	4	77.44
340C3	Zanesville silt loam, 5 to 10% slopes	4.44	1.7%	4	69.68
W	Water	2.67	1%	8	0
340D3	Zanesville silt loam, 10 to 18% slopes	2.65	1%	6	63.14
164A	Stoy silt loam, 0 to 2% slopes	2.17	0.8%	2	108.88
214D2	Hosmer silt loam, 10 to 18% slopes	1.23	0.5%	4	86.5
		261.54			85.19