

# 320± Acre Kansas Hunting Property for Sale - Elk County

www.TrophyPA.com • (855) 573-5263 • leads@trophyapa.com



## PROPERTY ADDRESS:

2175 Road 24  
 Fall River, KS 67047

**PRICE:** \$752,000

**ACRES:** 320

**COUNTY:** Elk

## PROPERTY HIGHLIGHTS:

- 2.5 Hours from KC
- New Fencing
- 2 Redneck Blinds
- 3 Feeders
- Mature Wildlife
- Vast Trail Camera History
- Secluded Hunting
- Heavy Cover
- Established Food Plots
- 1 Hour from Wichita

## PROPERTY DESCRIPTION:

I have said it before, and I will say it again; this property is cooler than a polar bear's toenails!! When you look at a property, every single one is unique in every way. Some are large, some are small. Some are flat and some are hilly. Some are open some are not. Then some like this offer everything imaginable for someone looking for a perfect recreational property that is good at hiding wildlife with every hill, tree, and acre of grass. This 320± acre Kansas hunting property is exactly that! It has native grass that allows for the bedding of whitetail deer and turkey all year-round. It has trees in large blocks as well as small fingers running through much of the property that offers shade, sanctuary, and browse to all wildlife in the area. There are multiple watering holes for wildlife to thrive all over the property. There are small valleys that provide a great wind block to wildlife when they are not out foraging these fields. It has been maintained very well over the years and you can tell. There have been multiple food plots put in place to give the deer that much needed protein year in and year out to maximize growth. There are 2 box blinds in place overlooking that strategic food plots that are certain to catch that SE Kansas buck trailing that doe. This place truly needs to be seen in person to appreciate its character and beauty. One drive through the property and you will see why it houses large amounts of turkey and very large whitetail deer!



**PRESENTED BY:**

**SAM VOSS**

**Land Specialist - KS/MO**

M: (913) 526-9369

P: (855) 573-5263 x745

svoss@trophyapa.com

**Trophy Properties and Auction**

15480 Clayton Road  
 Suite 101

Ballwin, MO 63011

www.Trophyapa.com

leads@trophyapa.com

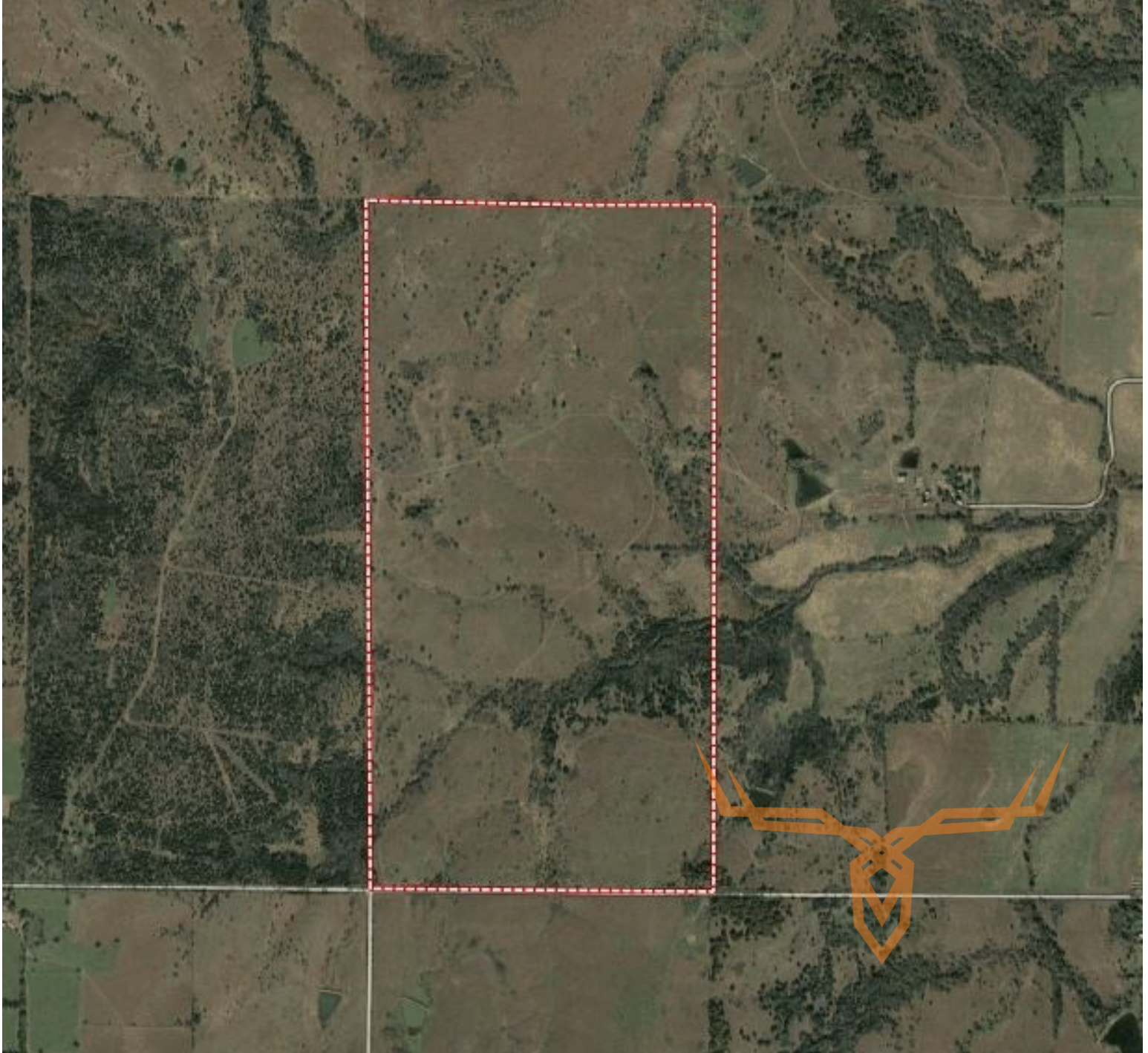




**T R O P H Y**  
PROPERTIES AND AUCTION  
LAND | RECREATIONAL | RESIDENTIAL

# 320± Acre Kansas Hunting Property for Sale - Elk County

[www.TrophyPA.com](http://www.TrophyPA.com) • (855) 573-5263 • [leads@trophy.com](mailto:leads@trophy.com)



Broker does not guarantee the accuracy of sq. ft., lot size, or other information, buyer is advised to independently verify the accuracy of information through personal inspection and with appropriate professionals

**TAXES: \$640**

**TAX YEAR: 2018**