



T R O P H Y
PROPERTIES AND AUCTION
LAND | RECREATIONAL | RESIDENTIAL

Pike County Missouri Land iAuction - Brown Farm

www.TrophyPA.com • (855) 573-5263 • leads@trophy.com



BIDDING ENDS WEDNESDAY, FEBRUARY 16TH AT 10:00 AM
SEE FULL TERMS & CONDITIONS AT WWW.TROPHYPA.COM

PROPERTY ADDRESS:

00 Hwy 161
Bowling Green, MO 63334

ACRES: 60
COUNTY: Pike

PROPERTY DESCRIPTION:

The time has come to sell 60± acres of land just outside Bowling Green. It's been in the Motely/Burcham/Brown family since the 1930s. *Seller: Scott R Brown, Trustee of the Barbara Brown Trust.*

These 60± flat to gently rolling acres are located less than one mile from the city limits of Bowling Green and is accessed by Highway 161. The existing woods and pond provide a dream site for a new home. Rural water and electricity are located on the property or just across the road. The farm has great tillable ground. A vast majority of the soils is Mexico Silt Loam. FSA indicates 49.9 tillable acres. Terraces were just put in on the backside of the farm in the past year. The farm sells free and clear for the fast-approaching 2022 crop year.



PRESENTED BY:

MIKE SHARPE

Licensed Realtor/Farm Appraiser

M: (573) 721-0944

P: (855) 573-5263 x753

E: msharpe@trophy.com

Trophy Properties and Auction

15480 Clayton Road

Suite 101

Ballwin, MO 63011

www.TrophyPA.com

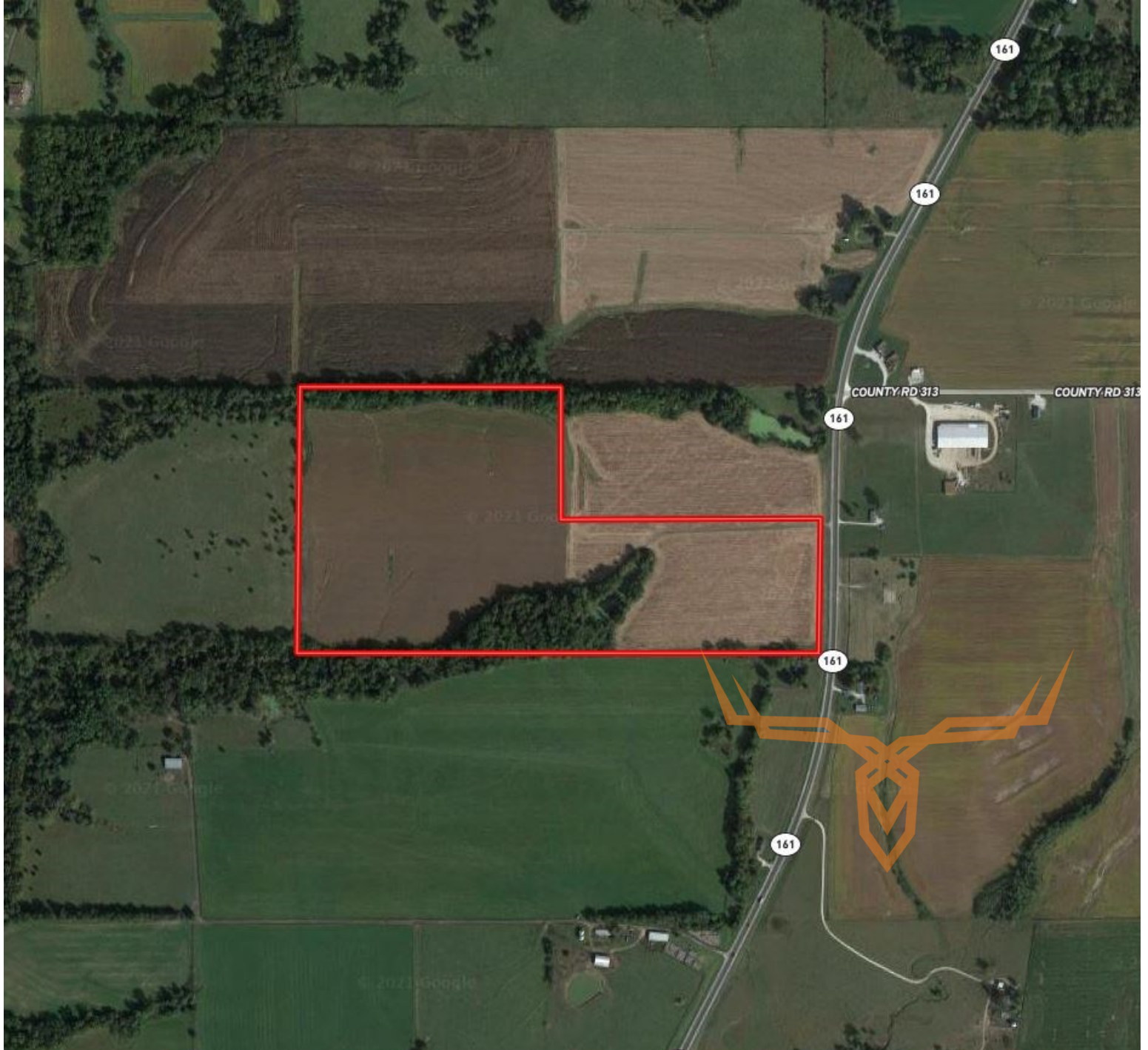
leads@trophy.com



T R O P H Y
PROPERTIES AND AUCTION
LAND | RECREATIONAL | RESIDENTIAL

Pike County Missouri Land iAuction - Brown Farm

www.TrophyPA.com • (855) 573-5263 • leads@trohypa.com



The information is believed to be accurate; however, no liability for its accuracy, errors or omissions is assumed. All lines are drawn on maps, photographs, etc. are approximate. Buyers should verify the information to their satisfaction. There are no expressed or implied warranties pertaining to this property. Both real estate (including all improvements, if any) is being sold As Is, Where Is with NO warranties expressed or implied. Please make all inspections and have financing arranged prior to the end of bidding.