



**T R O P H Y**  
PROPERTIES AND AUCTION  
LAND | RECREATIONAL | RESIDENTIAL

# Hallsville School District Home on 10± Acres - Hagedorn Property

www.TrophyPA.com • (855) 573-5263 • leads@trophypa.com



BIDDING ENDS WEDNESDAY, MARCH 23RD AT 10:00 AM  
SEE FULL TERMS & CONDITIONS AT [WWW.TROPHYPA.COM](http://WWW.TROPHYPA.COM)



**PROPERTY ADDRESS:**  
4901 E. Wildbird Lane  
Sturgeon, MO 65284

**ACRES:** 10  
**COUNTY:** Boone

## PROPERTY DESCRIPTION:

### Open house dates:

- Sunday, February 27th 1PM to 3PM
- Saturday, March 12th 10AM to 12PM.

**Bidding ends Wednesday, March 23, 2022 at 10:00 AM.**

Bring your horses and your kids and enjoy the outdoors! This 10± acre property located in the Hallsville school district has room for everything and even includes newly installed fiber internet. The traditional style house has 3,096± square feet of living area over two floors and a finished basement. The main level includes a 2-car garage, large foyer with a half bath, laundry room, kitchen, dining area and a large living room. The second floor has 3 bedrooms and 1 full bathroom and a spacious master suite that include an en suite bathroom with a jacuzzi tub. The basement has one bedroom, one bathroom and living area that walks out onto a concrete patio. New HVAC was installed in 2020 and all kitchen appliances will convey with the property. The perfect 24' x 36' horse shed/storage building can hold the toys!



**PRESENTED BY:**

**MIKE SHARPE**

Licensed Realtor/Farm Appraiser

M: (573) 721-0944

P: (855) 573-5263 x753

E: [msharpe@trophypa.com](mailto:msharpe@trophypa.com)

**Trophy Properties and Auction**

15480 Clayton Road

Suite 101

Ballwin, MO 63011

[www.Trophypa.com](http://www.Trophypa.com)

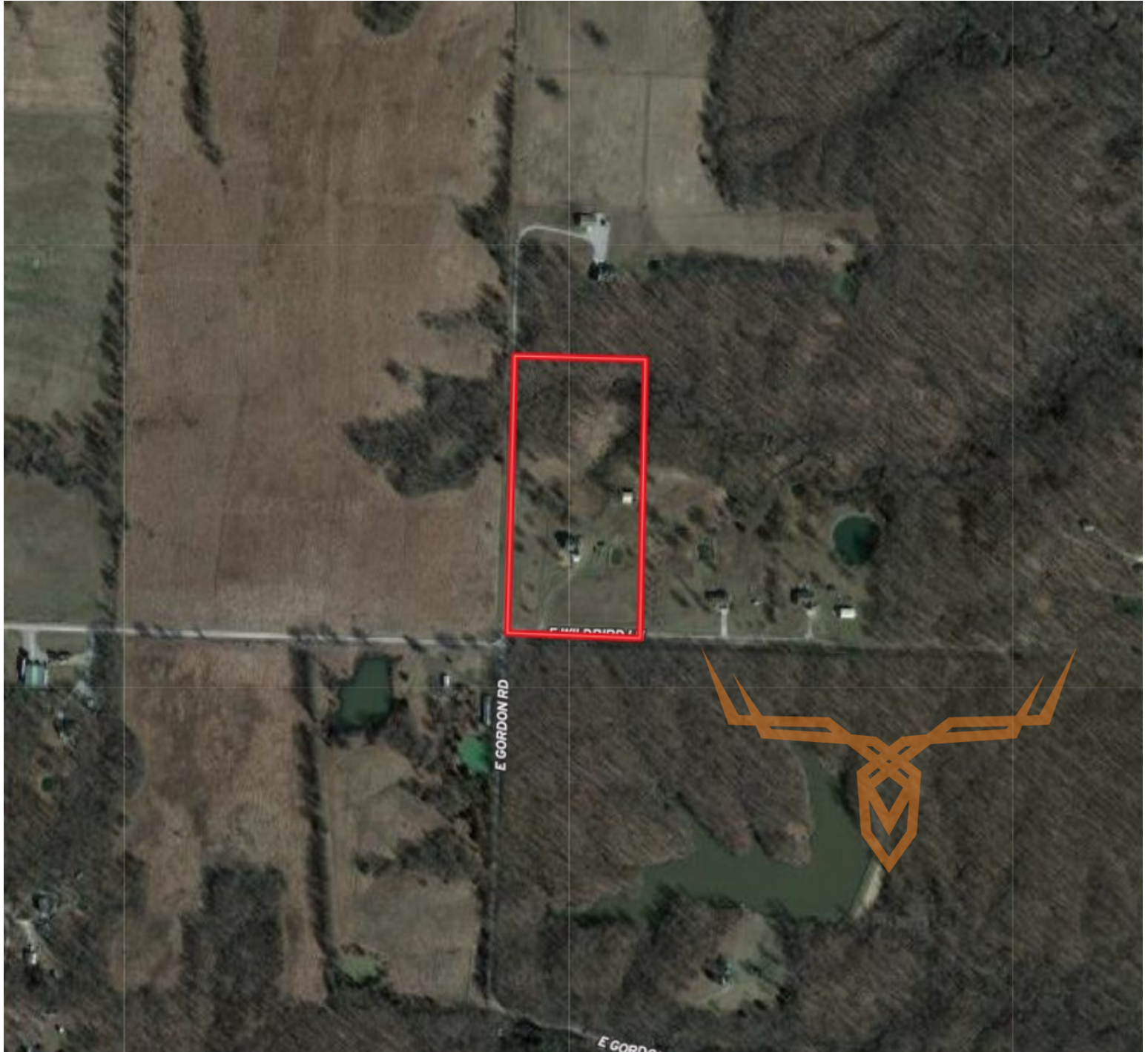
[leads@trophypa.com](mailto:leads@trophypa.com)



**T R O P H Y**  
PROPERTIES AND AUCTION  
LAND | RECREATIONAL | RESIDENTIAL

# Hallsville School District Home on 10± Acres - Hagedorn Property

[www.TrophyPA.com](http://www.TrophyPA.com) • (855) 573-5263 • [leads@trophyPA.com](mailto:leads@trophyPA.com)



The information is believed to be accurate; however, no liability for its accuracy, errors or omissions is assumed. All lines are drawn on maps, photographs, etc. are approximate. Buyers should verify the information to their satisfaction. There are no expressed or implied warranties pertaining to this property. Both real estate (including all improvements, if any) is being sold As Is, Where Is with NO warranties expressed or implied. Please make all inspections and have financing arranged prior to the end of bidding.