



**T R O P H Y**  
PROPERTIES AND AUCTION  
LAND | RECREATIONAL | RESIDENTIAL

# 7.3 Acre Build Ready Lot with Water & Electric on Hwy M for Sale - Warren County

www.TrophyPA.com • (855) 573-5263 • leads@trophyapa.com

**PRICE IMPROVED**



**PROPERTY ADDRESS:**

00 Hwy M  
Wright City, MO 63390

**PRICE:** \$215,350

**ACRES:** 7.3

**COUNTY:** Warren

**PROPERTY HIGHLIGHTS:**

- 7.3± acres of vacant land
- Deep well and electric on property
- Highway M frontage
- Only 5 min from Hwy 70
- Shouse Style Homes Welcome
- Survey will determine exact acreage
- Wright City Schools
- Some restrictions - see property description.

**PROPERTY DESCRIPTION:**

Build ready lot includes water, electric & septic onsite! Conveniently located just 5 minutes from Hwy 70, this property is perfect for custom home building and will allow Shouse Style Homes! This tract sets along blacktop road Hwy M and features a deep well and electric. Enjoy the space and rural setting with the all the city amenities nearby. Vacant land with minimal restrictions are hard to find in this market! Deed Restrictions to be recorded at closing to include no mobile homes; no junk yards; no hog confinements; no livestock feeding operations; no dog kennel operations; no unlicensed vehicles.



**PRESENTED BY:**

**JOE OGDEN**

**Land & Home Specialist**

M: (636) 358-3567

P: (855) 573-5263 x707

E: jogden@trophyapa.com

**Trophy Properties and Auction**

15480 Clayton Road

Suite 101

Ballwin, MO 63011

www.Trophyapa.com

leads@trophyapa.com

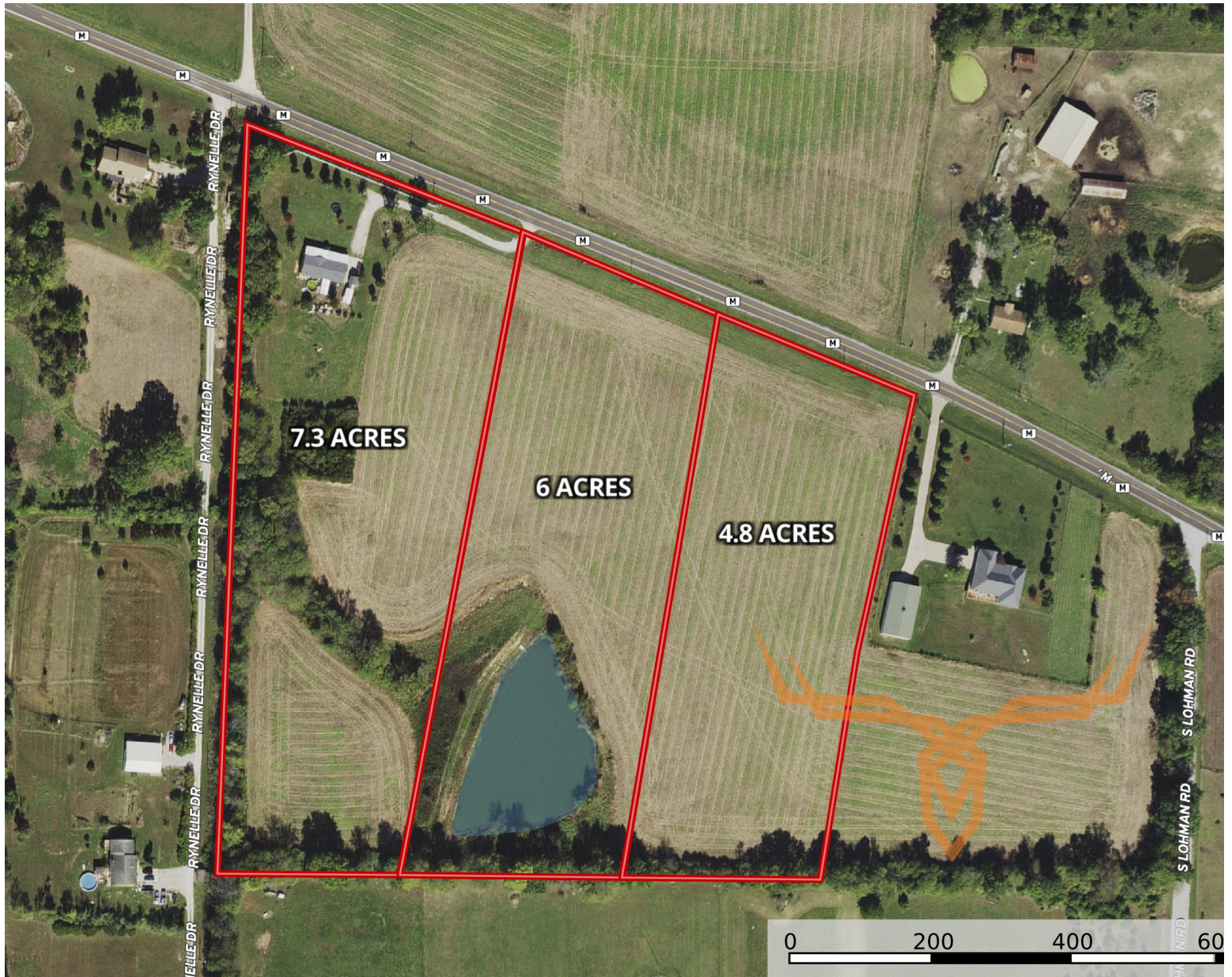




**T R O P H Y**  
PROPERTIES AND AUCTION  
LAND | RECREATIONAL | RESIDENTIAL

# 4.8 Acre Vacant Building Tract for Sale on Hwy M - Warren County

[www.TrophyPA.com](http://www.TrophyPA.com) • (855) 573-5263 • [leads@trophy.com](mailto:leads@trophy.com)



ndary

**M** The information contained  
deemed to be reliable.  
MapRight Services make  
completeness or accuracy

Broker does not guarantee the accuracy of sq. ft., lot size, or other information, buyer is advised to independently verify the accuracy of information through personal inspection and with appropriate professionals