



Warren County Missouri Land iAuction

T R O P H Y
PROPERTIES AND AUCTION
LAND | RECREATIONAL | RESIDENTIAL

www.TrophyPA.com • (855) 573-5263 • leads@trophyapa.com



BIDDING ENDS WEDNESDAY, APRIL 13TH AT 10:00 AM
SEE FULL TERMS & CONDITIONS AT WWW.TROPHYPA.COM



PROPERTY ADDRESS:

00 State Hwy Y
Jonesburg, MO 63351

ACRES: 145

COUNTY: Warren

PROPERTY DESCRIPTION:

Open House Saturday, March 26th 11AM to 2PM.

Bidding ends Wednesday, April 13, 2022, at 10:00 AM

These gently rolling to rolling 140.2 surveyed acres offered in 3 tracts is conveniently located on State Highway Y 5.3 miles southwest of Jonesburg, 31.7 miles west of Wentzville, and 62.5 miles east of Columbia. The land is comprised of mature hardwoods with many white oaks and scattered cedars. Excellent habitat and cover for wildlife such as whitetail deer and turkey. The wildlife is abundant and offers opportunities for hunting and nature viewing. Endless possibilities such as new homesites, camping, hiking, and therapeutic recreation. Electric and rural water onsite.

Tract 1: 26.8 surveyed acres of mature hardwoods with frontage on State Highway Y and access to gated private road. Older cabin structure and pond.

Tract 2: 49.5 surveyed acres of mature hardwoods with some trails for walking and AT-V's. Access by gated private road.

Tract 3: 63.9 surveyed acres of mature hardwoods with some trails for walking and AT-V's. Access by gated private road. Older structure (former mess hall) and pond.



PRESENTED BY:

ERIC MERCHANT

Real Estate Consultant

M: (314) 541-1218

P: (855) 573-5263 x730

E: emerchant@trophyapa.com

CHARLIE CAGLE

Real Estate Consultant

M: (636) 234-6268

P: (855) 573-5263 x738

E: ccagle@trophyapa.com

Trophy Properties and Auction

15480 Clayton Road

Suite 101

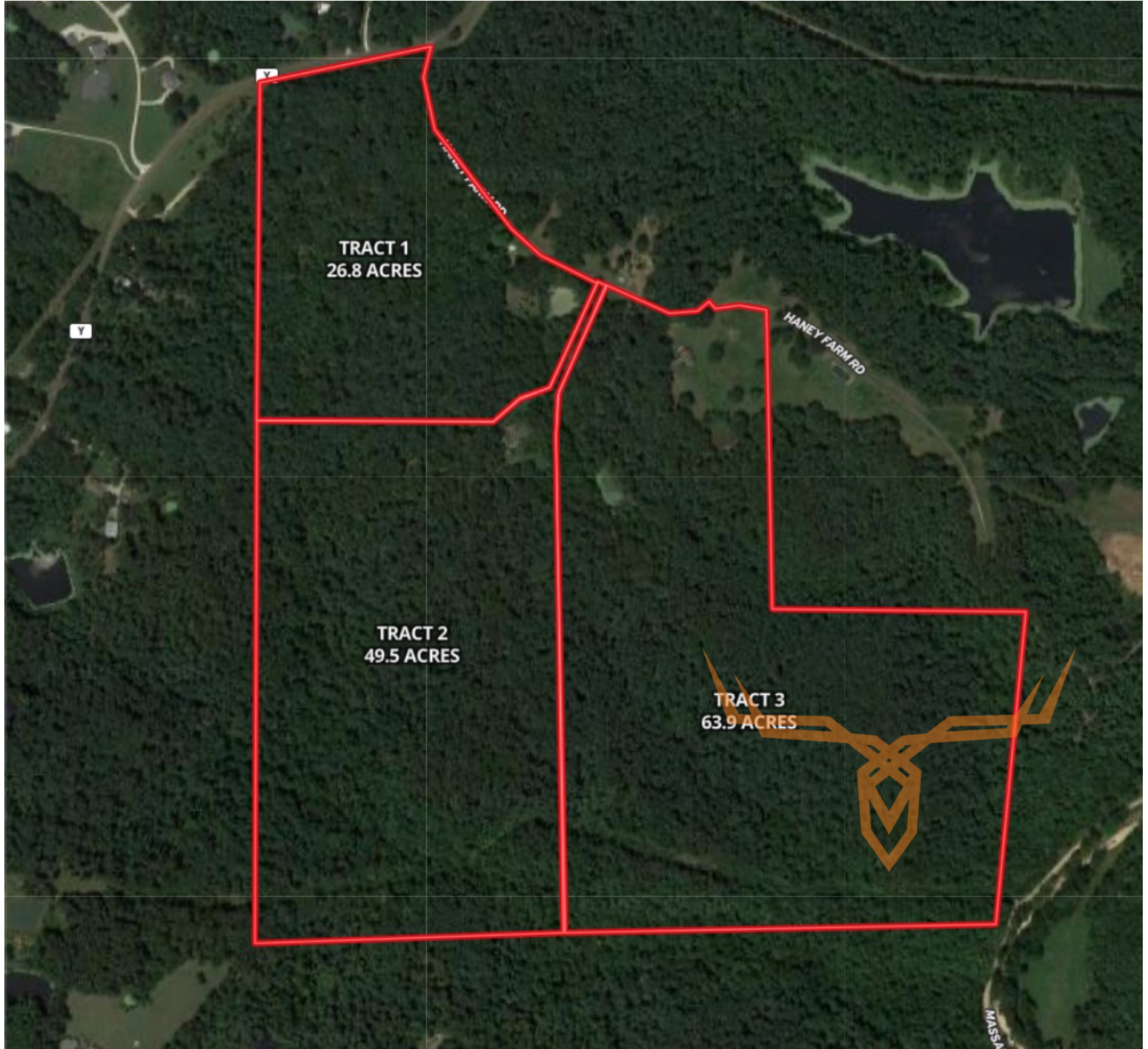
Ballwin, MO 63011



Warren County Missouri Land iAuction

T R O P H Y
PROPERTIES AND AUCTION
LAND | RECREATIONAL | RESIDENTIAL

www.TrophyPA.com • (855) 573-5263 • leads@trophy.com



The information is believed to be accurate; however, no liability for its accuracy, errors or omissions is assumed. All lines are drawn on maps, photographs, etc. are approximate. Buyers should verify the information to their satisfaction. There are no expressed or implied warranties pertaining to this property. Both real estate (including all improvements, if any) is being sold As Is, Where Is with NO warranties expressed or implied. Please make all inspections and have financing arranged prior to the end of bidding.