



Jefferson County Missouri Land iAuction - Dallas Property

T R O P H Y
PROPERTIES AND AUCTION
LAND | RECREATIONAL | RESIDENTIAL

www.TrophyPA.com • (855) 573-5263 • leads@trophyapa.com



BIDDING ENDS WEDNESDAY, JULY 20TH AT 10:00 AM
SEE FULL TERMS & CONDITIONS AT WWW.TROPHYPA.COM



PROPERTY ADDRESS:
00 Sunrise School Rd.
DeSoto, MO 63020

ACRES: 164.55
COUNTY: Jefferson

PROPERTY DESCRIPTION:

Open house Sunday, June 26th 10 AM to 2 PM.

These 164.55 surveyed acres offered in 5 tracts are located just 3 minutes off of Highway 67 on Sunrise School Rd (paved road) in Valles Mines, MO. All these tracts offer excellent building sites and they lay gentle enough for horses or animals of your choice. Tract 1, 2 (existing pond), 4, and 5 have potential pond sites and Tract 3 has a possible lake site. The tracts have recently been select cut making it easier to find your building spot and the hunting and recreation will continue to be awesome. Plenty of places for food plots. These tracts are located between Valle Lake & Sunrise Beach Lake communities.

Recreational and building tracts like these are hard to find. Why drive hours to hunt, recreational therapy, and build your dream home when you can do it less than 40 minutes from South County. Excellent recreational opportunities, riding 4-wheeler & side by sides, hiking, foraging, horses, boutique farming/livestock, etc. The opportunities of these tracts are endless. NO RESTRICTIONS. Prepper's Paradise. Sunrise Elementary School District & DeSoto High School District. Only 15 minutes from DeSoto & Bonne Terre, 20 minutes to Festus, 30 minutes to Farmington, & 40 minutes from Highway 55 & 270 Interchange

Tract 1: 20.25 surveyed gently rolling acres.

Tract 2: 20.18 surveyed gently rolling acres.

Tract 3: 85.49 surveyed gently rolling acres.

Tract 4: 18.62 surveyed gently rolling acres.

Tract 5: 20.01 surveyed gently rolling acres.



PRESENTED BY:

DAVID CONWAY

Land & Home Specialist

M: (314) 910-9634

P: (855) 573-5263 x747

E: dconway@trophyapa.com

Trophy Properties and Auction

15480 Clayton Road

Suite 101

Ballwin, MO 63011

www.Trophyapa.com

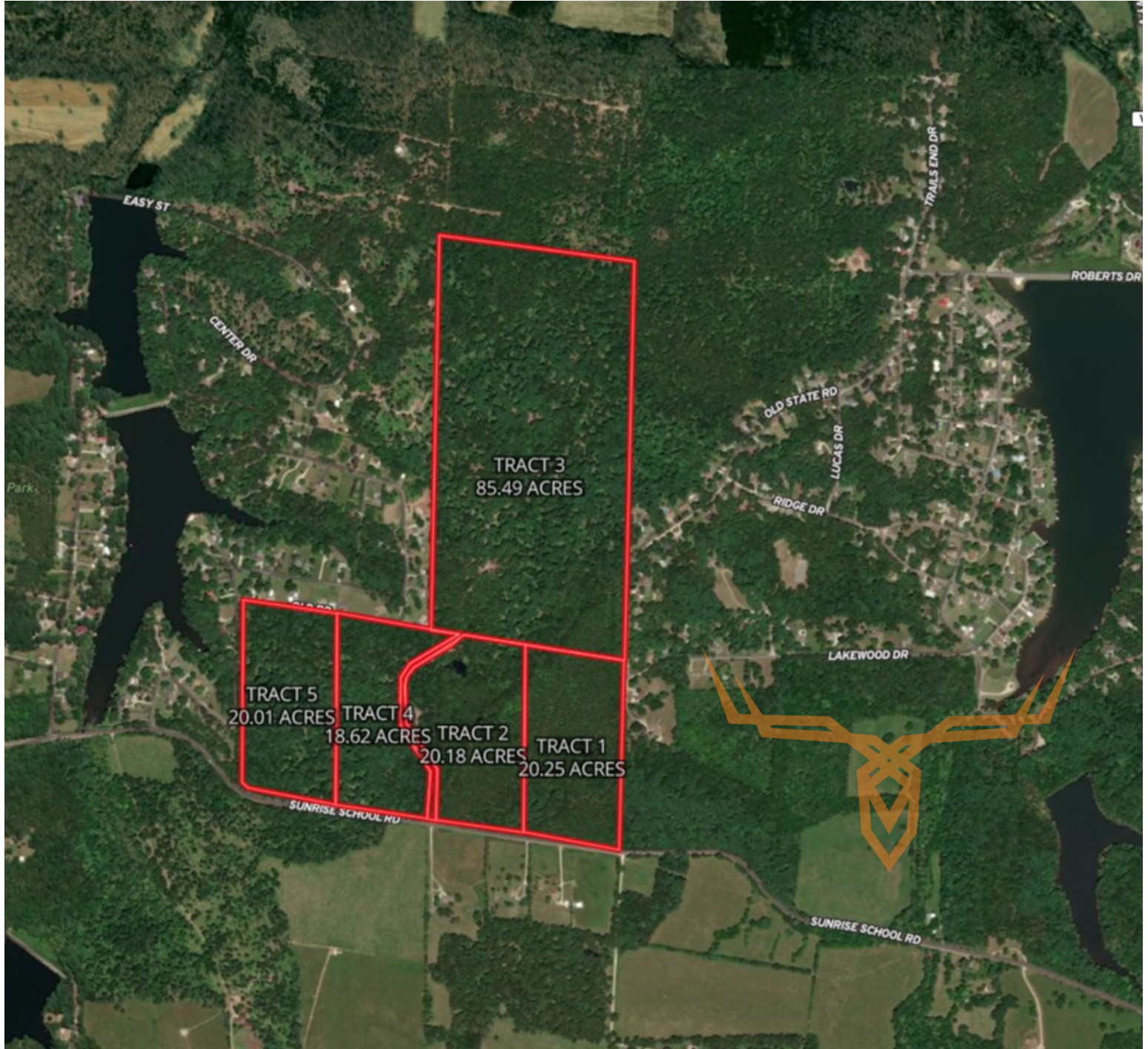
leads@trophyapa.com



Jefferson County Missouri Land iAuction - Dallas Property

T R O P H Y
PROPERTIES AND AUCTION
LAND | RECREATIONAL | RESIDENTIAL

www.TrophyPA.com • (855) 573-5263 • leads@trophy.com



The information is believed to be accurate; however, no liability for its accuracy, errors or omissions is assumed. All lines are drawn on maps, photographs, etc. are approximate. Buyers should verify the information to their satisfaction. There are no expressed or implied warranties pertaining to this property. Both real estate (including all improvements, if any) is being sold As Is, Where Is with NO warranties expressed or implied. Please make all inspections and have financing arranged prior to the end of bidding.