



**T R O P H Y**  
PROPERTIES AND AUCTION  
LAND | RECREATIONAL | RESIDENTIAL

# Ralls County Missouri Land iAuction - Strouse Property

[www.TrophyPA.com](http://www.TrophyPA.com) • (855) 573-5263 • [leads@trophypa.com](mailto:leads@trophypa.com)



BIDDING ENDS WEDNESDAY, JUNE 15<sup>TH</sup> AT 10:00 AM  
SEE FULL TERMS & CONDITIONS AT [WWW.TROPHYPA.COM](http://WWW.TROPHYPA.COM)



**PROPERTY ADDRESS:**  
00 Salt River  
Monroe City, MO 63456

**ACRES:** 30  
**COUNTY:** Ralls

## PROPERTY DESCRIPTION:

**PROPERTY VIEWING DATES:** Saturday, May 28<sup>th</sup> 10am-Noon and Saturday, June 11<sup>th</sup> 10am-Noon.

**Bidding ends Wednesday, June 15<sup>th</sup> at 10:00 AM.**

Stunning wooded property on the bluff overlooking the Salt River Bottoms. This 30± acres border the Salt River in Ralls County near Monroe City and Perry. This property is located less than 2 miles from The Landing and less than 3 miles from the Clarence Cannon Dam. Property is very well located and close to the main features of Mark Twain Lake! You want privacy? You got it with this small tract.

**PROPERTY DOES NOT HAVE LEGAL ACCESS AT THIS TIME. TRACT DOES HAVE A VERY GOOD ROAD TO IT, BUT THIS IS CURRENTLY A PRIVATE ROAD FOR ANOTHER PROPERTY. PROPERTY VIEWING ONLY ON THE OPEN HOUSE DATES. PLEASE DO NOT LOOK AT TRACT BESIDES THESE DAYS.**



**PRESENTED BY:**

**MIKE SHARPE**

**Land Specialist**

M: (573) 721-0944

P: (855) 573-5263 x753

E: [msharpe@trophypa.com](mailto:msharpe@trophypa.com)

**Trophy Properties and Auction**

15480 Clayton Road

Suite 101

Ballwin, MO 63011

[www.Trophypa.com](http://www.Trophypa.com)

[leads@trophypa.com](mailto:leads@trophypa.com)

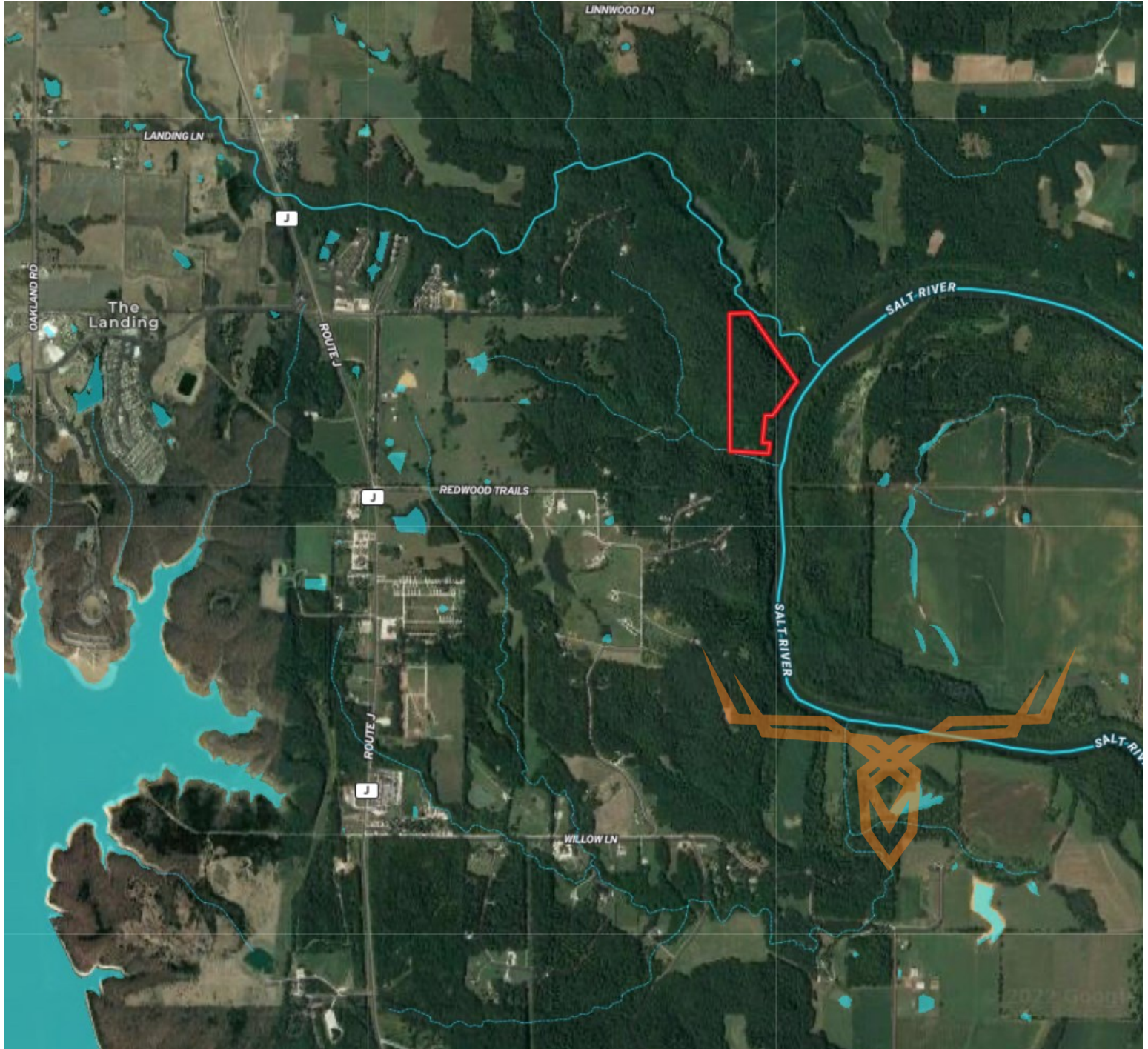




**T R O P H Y**  
PROPERTIES AND AUCTION  
LAND | RECREATIONAL | RESIDENTIAL

# Ralls County Missouri Land iAuction - Strouse Property

[www.TrophyPA.com](http://www.TrophyPA.com) • (855) 573-5263 • [leads@trophy.com](mailto:leads@trophy.com)



The information is believed to be accurate; however, no liability for its accuracy, errors or omissions is assumed. All lines are drawn on maps, photographs, etc. are approximate. Buyers should verify the information to their satisfaction. There are no expressed or implied warranties pertaining to this property. Both real estate (including all improvements, if any) is being sold As Is, Where Is with NO warranties expressed or implied. Please make all inspections and have financing arranged prior to the end of bidding.