



T R O P H Y
PROPERTIES AND AUCTION
LAND | RECREATIONAL | RESIDENTIAL

Ripley County Missouri Land iAuction - Balok

www.TrophyPA.com • (855) 573-5263 • leads@trophypa.com



BIDDING ENDS WEDNESDAY, JUNE 8TH AT 10:00 AM
SEE FULL TERMS & CONDITIONS AT WWW.TROPHYPA.COM



PROPERTY ADDRESS:

00 State Hwy 21
Doniphan, MO 63935

ACRES: 114
COUNTY: Ripley

PROPERTY DESCRIPTION:

Open House Saturday, May 21st 9AM to 1PM

These 114± gently rolling wooded acres are located in scenic Ripley County Missouri. Located just 30 minutes from Poplar Bluff, 17 minutes from Doniphan, 10 minutes from Grandin, and across the street from 3,000 acres of State Forest. This property has two small ponds and two all-weather creeks. There are 3 clearings to establish food plots and several draws and ridges. There are multiple stand placements to hunt the wind. There is turkey and deer sign everywhere as well as game trails throughout the property. A gravel road runs through the center of the property to the tallest ridge. This property is close to many activities and amenities in the area. The Little Black Conservation Area on the South Prong of the Little Black River offers hunting, fishing, floating, camping, hiking, and an archery shooting range. The Mudpuppy Conservation Area has another 1,300 acres of fishing, hunting, and floating. Access to the Current River is in nearby Doniphan along with several floating options. Big Spring State Park in Van Buren, is only 30 minutes away for floating, boating, fishing, hiking, and camping. Here you are close to Ozark National Scenic Riverways, state, and national forests. Come build your house, park your camper, hunt, ride ATV's, and take advantage of the local amenities and activities in Ripley County.



PRESENTED BY:

DEAN COCHRAN

Land & Home Specialist

M: (314) 852-3621

P: (855) 573-5263 x755

E: dcochran@trophypa.com

Trophy Properties and Auction

15480 Clayton Road

Suite 101

Ballwin, MO 63011

www.Trophypa.com

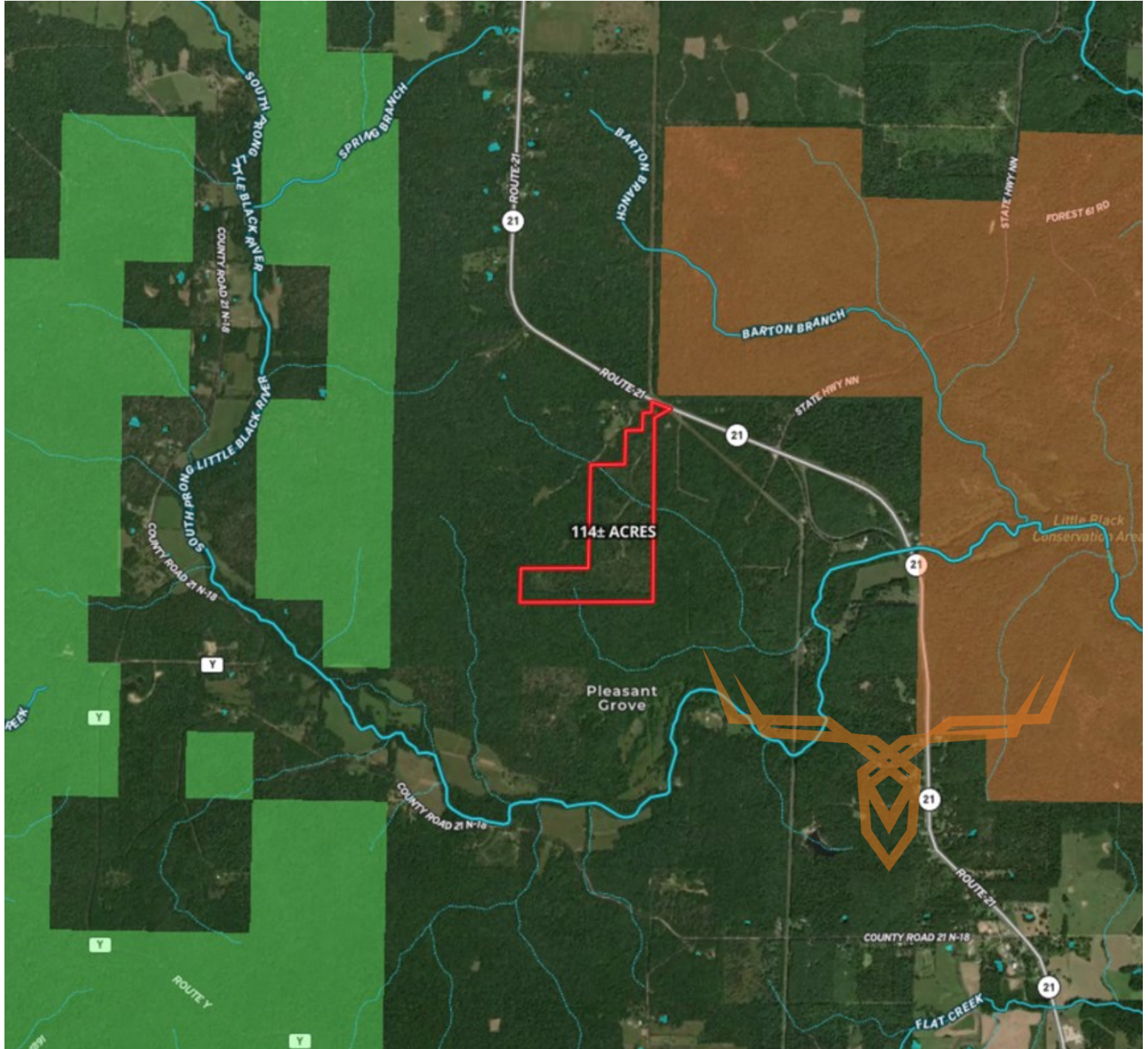
leads@trophypa.com



T R O P H Y
PROPERTIES AND AUCTION
LAND | RECREATIONAL | RESIDENTIAL

Ripley County Missouri Land iAuction - Balok

www.TrophyPA.com • (855) 573-5263 • leads@trophyPA.com



The information is believed to be accurate; however, no liability for its accuracy, errors or omissions is assumed. All lines are drawn on maps, photographs, etc. are approximate. Buyers should verify the information to their satisfaction. There are no expressed or implied warranties pertaining to this property. Both real estate (including all improvements, if any) is being sold As Is, Where Is with NO warranties expressed or implied. Please make all inspections and have financing arranged prior to the end of bidding.