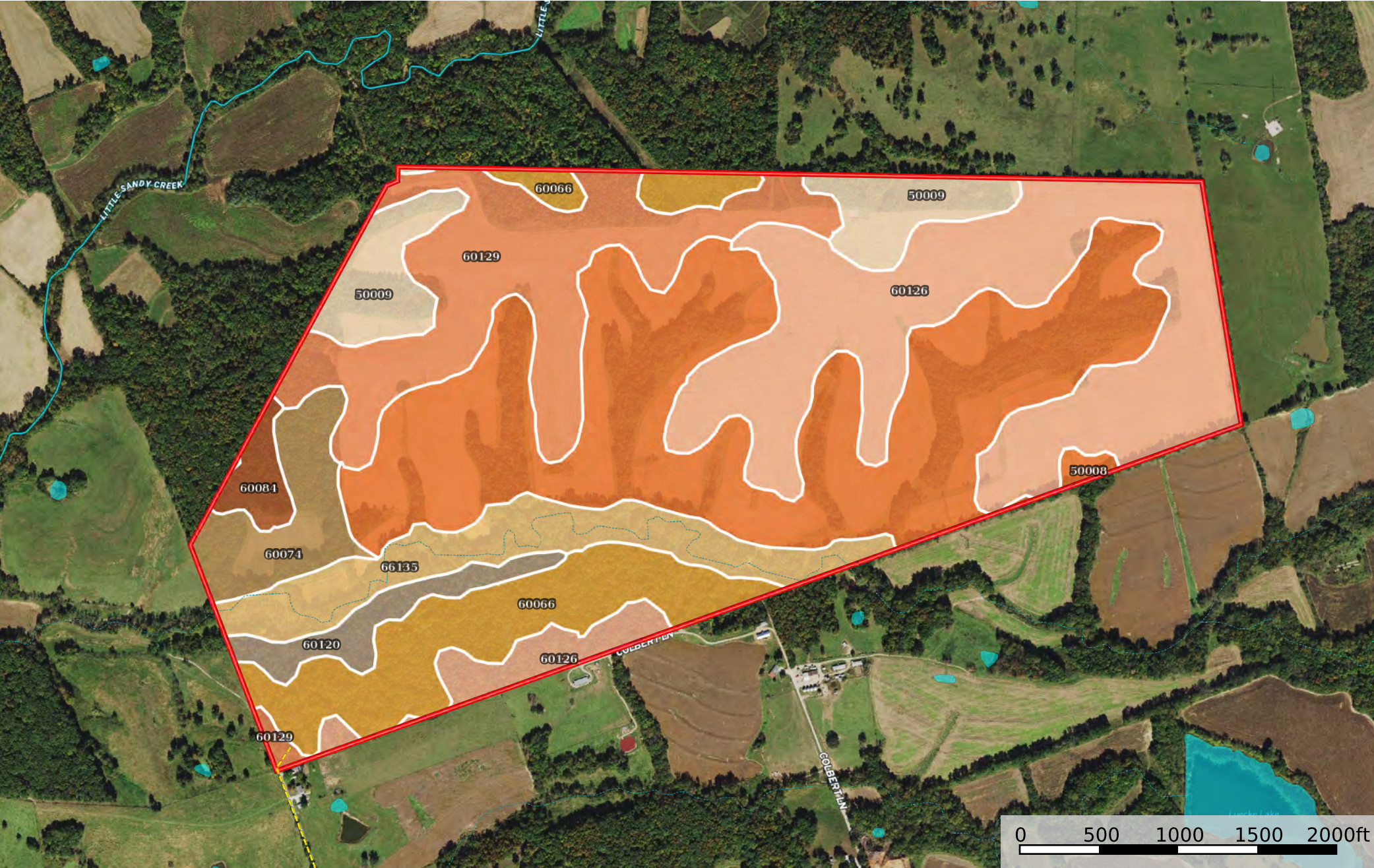


Lincoln 370
Missouri, AC +/-



--- Road / Trail □ Boundary Stream, Intermittent — River/Creek ■ Water Body

Boundary 371.69 ac

SOIL CODE	SOIL DESCRIPTION	ACRES	%	CPI	NCCPI	CAP
50008	Keswick silt loam, 5 to 9 percent slopes, eroded	116.07	31.23	0	60	3e
60126	Hatton silt loam, 2 to 5 percent slopes	87.62	23.57	0	64	2e
60129	Hatton silt loam, 5 to 9 percent slopes	51.99	13.99	0	62	3e
60066	Brevator loam, 14 to 30 percent slopes	37.77	10.16	0	40	6e
66135	Dameron silt loam, 1 to 4 percent slopes, occasionally flooded	27.03	7.27	0	85	2w
50009	Keswick silt loam, 9 to 14 percent slopes, eroded	21.81	5.87	0	52	4e
60074	Bucklick silty clay loam, 9 to 14 percent slopes, eroded	15.57	4.19	0	50	4e
60120	Goss-Gasconade-Brussels complex, 9 to 70 percent slopes, very stony	8.94	2.41	0	10	7e
60084	Crider silt loam, 5 to 9 percent slopes, eroded	4.89	1.32	0	73	3e
TOTALS		371.69(*)	100%	-	59.09	3.19

(*) Total acres may differ in the second decimal compared to the sum of each acreage soil. This is due to a round error because we only show the acres of each soil with two decimal.

Capability Legend

Increased Limitations and Hazards

Decreased Adaptability and Freedom of Choice Users

Land, Capability

	1	2	3	4	5	6	7	8
'Wild Life'	•	•	•	•	•	•	•	•
Forestry	•	•	•	•	•	•	•	
Limited	•	•	•	•	•	•	•	
Moderate	•	•	•	•	•	•		
Intense	•	•	•	•	•			
Limited	•	•	•	•				
Moderate	•	•	•					
Intense	•	•						
Very Intense	•							

Grazing Cultivation

(c) climatic limitations (e) susceptibility to erosion

(s) soil limitations within the rooting zone (w) excess of water