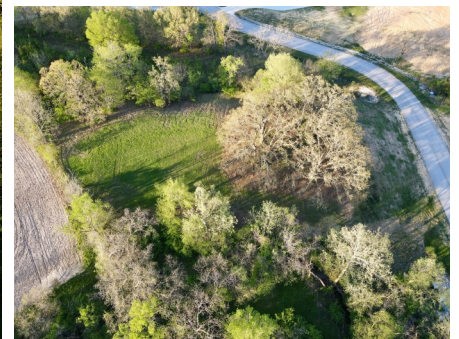




T R O P H Y
PROPERTIES AND AUCTION
LAND | RECREATIONAL | RESIDENTIAL

Vacant Building Lot for Sale in Harvest View Acres Subdivision - Madison County

www.TrophyPA.com • (855) 573-5263 • leads@trophyapa.com



PROPERTY ADDRESS:

12610 Harvest View Lane
Highland, IL 62249

PRICE: \$99,900

ACRES: 2±

COUNTY: Madison

PROPERTY HIGHLIGHTS:

- Mature Trees
- Highland Schools
- Potential Walkout
- 30 Minutes from St. Louis
- Your Plan; Your Builder

PROPERTY DESCRIPTION:

This amazing 2 acre lot will not last long! If you are looking for a little taste of country living close to everything do not pass this one up!! Bordered by woods on both sides this is a beautiful setting on top of a ridge with plenty of room for a walk-out basement and you can sit on your back porch and enjoy some amazing sunsets!!

Located just east of Highland you are close to all the amenities and can be in St. Louis in about 30 minutes!! The lot has high speed internet, city water and electric and is in the Highland School District! So, get ahold of your favorite agent and come see if this is the right location for your dream home!



PRESENTED BY:

SCOTT ATHMER

Land & Home Specialist

M: (618) 830-6192

P: (855) 573-5263 x739

E: sathmer@trophyapa.com

Trophy Properties and Auction

640 Cepi Drive

Suite 100

Chesterfield, MO 63005

www.Trophyapa.com

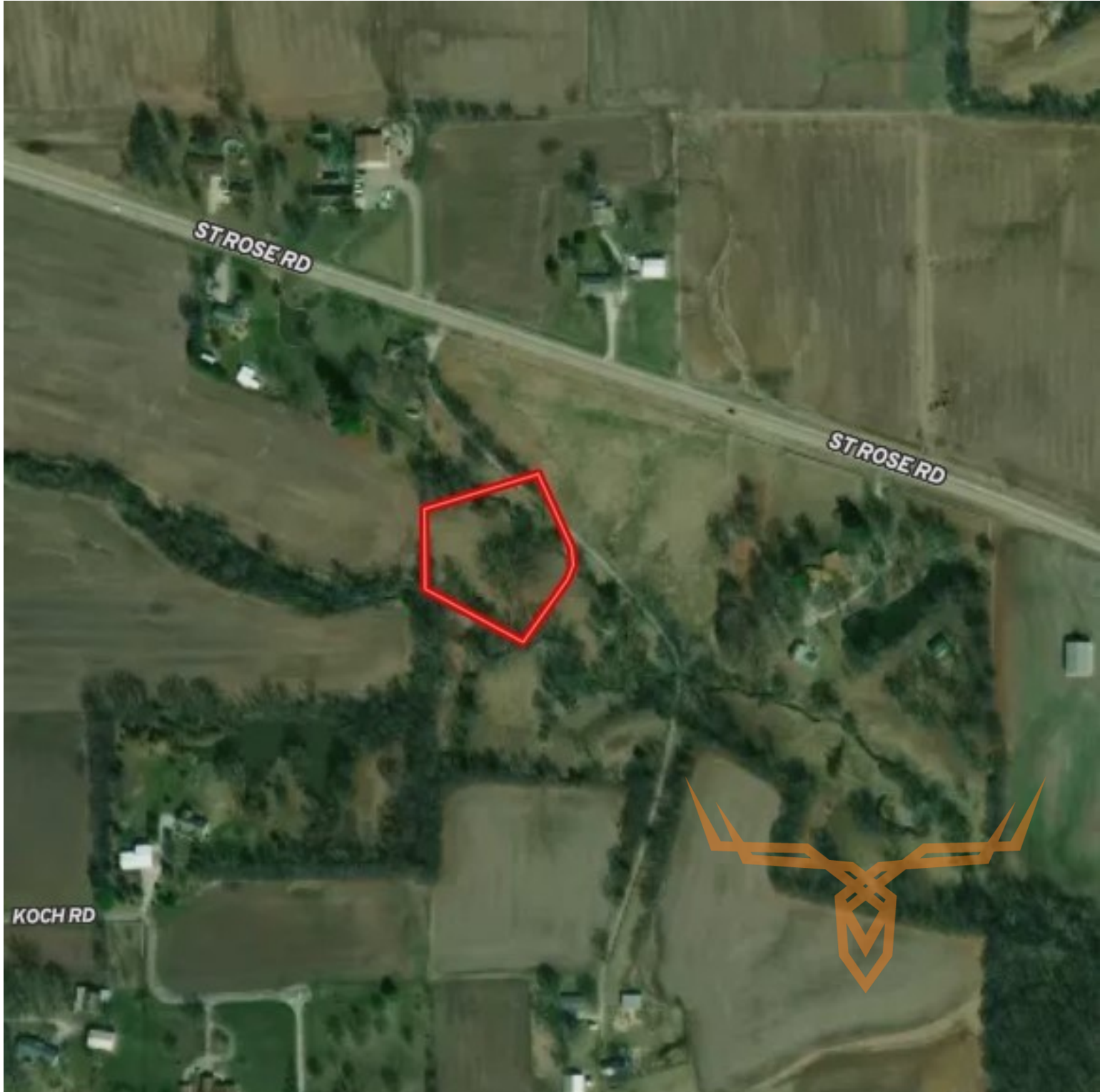
leads@trophyapa.com



T R O P H Y
PROPERTIES AND AUCTION
LAND | RECREATIONAL | RESIDENTIAL

Vacant Building Lot for Sale in Harvest View Acres Subdivision - Madison County

www.TrophyPA.com • (855) 573-5263 • leads@trophyPA.com



Broker does not guarantee the accuracy of sq. ft., lot size, or other information, buyer is advised to independently verify the accuracy of information through personal