



Marion County Missouri Land iAuction - Earlywine Farm

T R O P H Y
PROPERTIES AND AUCTION
LAND | RECREATIONAL | RESIDENTIAL

www.TrophyPA.com • (855) 573-5263 • leads@trophyapa.com



BIDDING ENDS TUESDAY, APRIL 18TH AT 10:00 AM
SEE FULL TERMS & CONDITIONS AT WWW.TROPHYPA.COM



PROPERTY ADDRESS:

00 State Hwy C
Emden, MO 63439

ACRES: 20

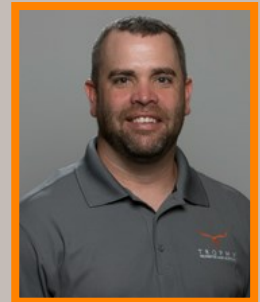
COUNTY: Monroe

AUCTION DETAILS:

Property Preview Saturday, April 15th 12PM to 1PM.

This stunning 20± acre property in Marion County, MO offers the perfect blend of open cropland and woods, making it an ideal choice for anyone seeking a tranquil rural retreat. Located just a short distance from both Monroe City and Mark Twain Lake, this property offers the best of both worlds, a serene natural setting with easy access to modern amenities.

The cropland portion of the property provides ample space for farming or gardening, while the wooded areas offer opportunities for hiking, hunting, or simply enjoying the beauty of nature. With a mix of mature hardwoods and younger trees, the woods are an ideal habitat for deer, turkey, and other game. Whether you're looking for a peaceful place to build your dream home, a private hunting retreat, or productive farm, this property has it all. Don't miss your chance to own a piece of rural paradise. The farm sells with farm tenant in place for the 2023 crop season.



PRESENTED BY:

JASON CHINN

Land Specialist

M: (573) 514-9368

P: (855) 573-5263 x708

E: jchinn@trophyapa.com

Trophy Properties and Auction

15480 Clayton Road

Suite 101

Ballwin, MO 63011

www.Trophyapa.com

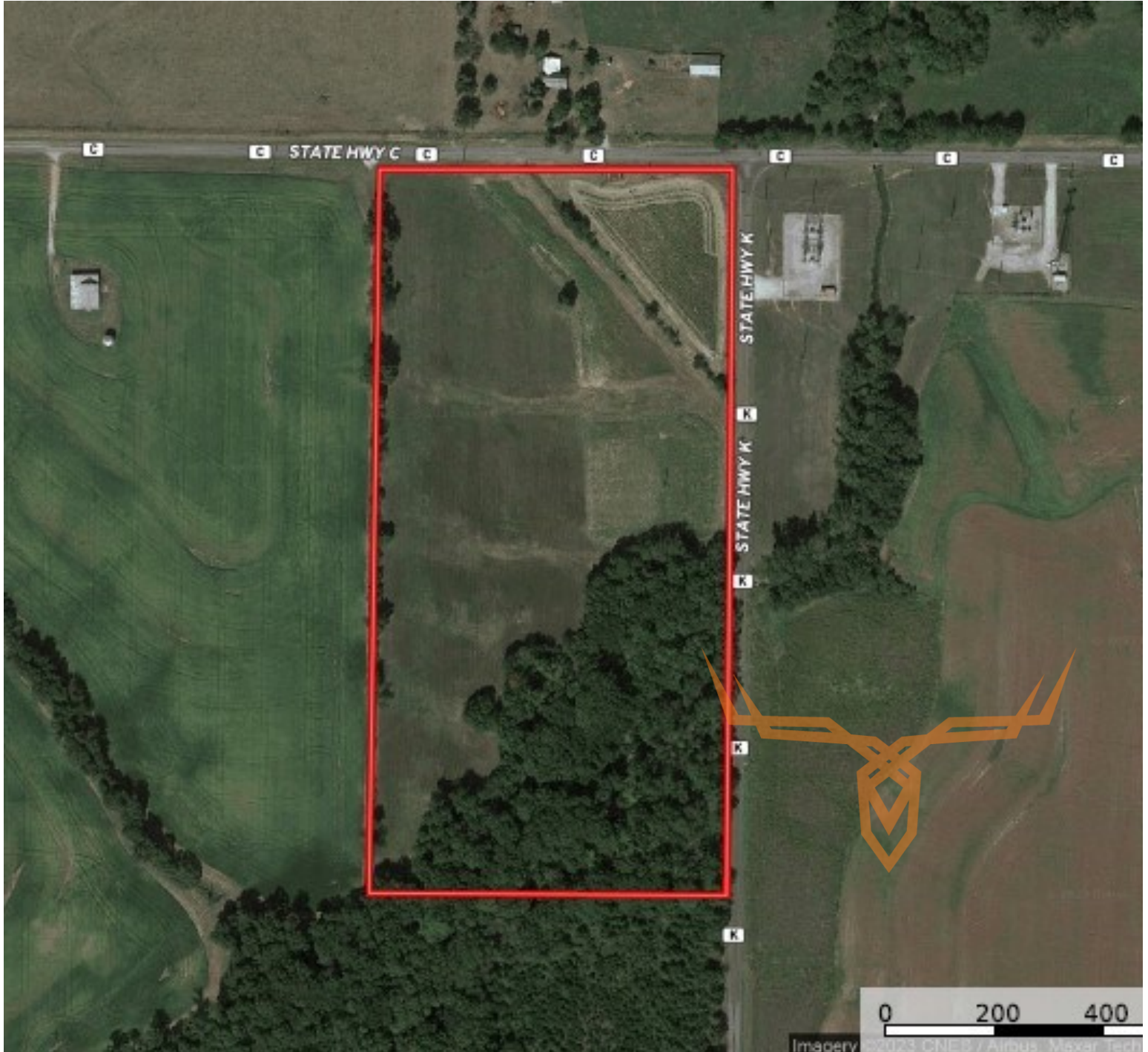
leads@trophyapa.com



T R O P H Y
PROPERTIES AND AUCTION
LAND | RECREATIONAL | RESIDENTIAL

Marion County Missouri Land iAuction - Earlywine Farm

www.TrophyPA.com • (855) 573-5263 • leads@trophy.com



The information is believed to be accurate; however, no liability for its accuracy, errors or omissions is assumed. All lines are drawn on maps, photographs, etc. are approximate. Buyers should verify the information to their satisfaction. There are no expressed or implied warranties pertaining to this property. Both real estate (including all improvements, if any) is being sold As Is, Where Is with NO warranties expressed or implied. Please make all inspections and have financing arranged prior to the end of bidding.