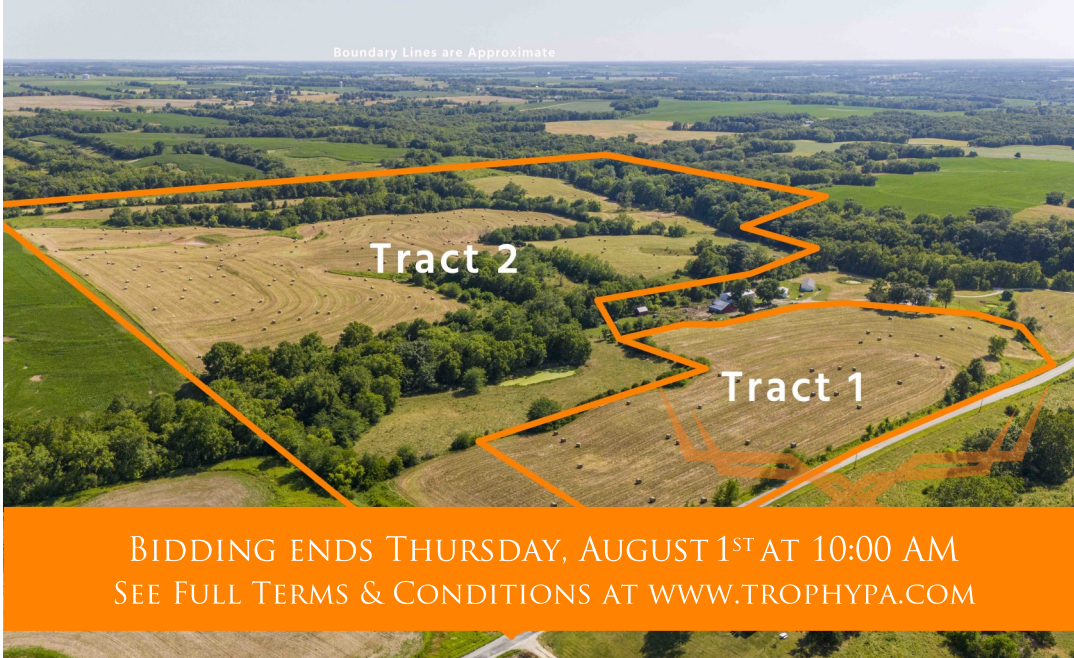




Marion County Missouri Land for Sale at iAuction - Sternke Farm

T R O P H Y
PROPERTIES AND AUCTION
LAND | RECREATIONAL | RESIDENTIAL

www.TrophyPA.com • (855) 573-5263 • leads@trophy.com



PROPERTY ADDRESS:
00 Co Road 402
Palmyra, MO 63461

ACRES: 126.1
COUNTY: Marion

AUCTION DETAILS:

Preview Date Wednesday, July 24th 6PM to 8PM.

These 126.1 flat to gently rolling surveyed acres are conveniently located on hard surfaced County Road 402 four (4) miles east of Palmyra and nine (9) miles northwest of Hannibal in the Palmyra School District. There are approximately 88 acres of open land. Most of those acres have been cropped in the past and are now sowed in clover with an outstanding stand. The balance of those acres is in grassland and being used for hay crop and pasture. The remaining 39± acres are wooded draws with spring fed creeks meandering through the property. The Sternke farm offers outstanding hunting and recreation along with great homesites with views. Farmland in this area rarely comes available to the public. Rural water, electricity, and natural gas are nearby. Don't miss out on the chance of a lifetime to own a slice of the Sternke Farm.

For more information call or text **Jason Kneib (636) 295-7047.**

Tract 1: 14.7 flat to gently rolling surveyed acres currently sowed to clover. This tract of land fronts County Road 402 and has rural water, electricity, and natural gas nearby. Nice homesites in the Palmyra School District.

Tract 2: 111.4 flat to gently rolling surveyed acres in clover, hay, pasture, and wooded draws with spring fed creeks. This tract fronts County Road 402 giving it access to the nearby utilities. The land offers excellent hunting, recreation, and has two small ponds.



PRESENTED BY:

JASON KNEIB
Land Specialist

M: (636) 295-7047

P: (855) 573-5263 x706

E: jkneib@trophy.com

Trophy Properties and Auction
640 Cepi Drive
Suite 100
Chesterfield, MO 63005

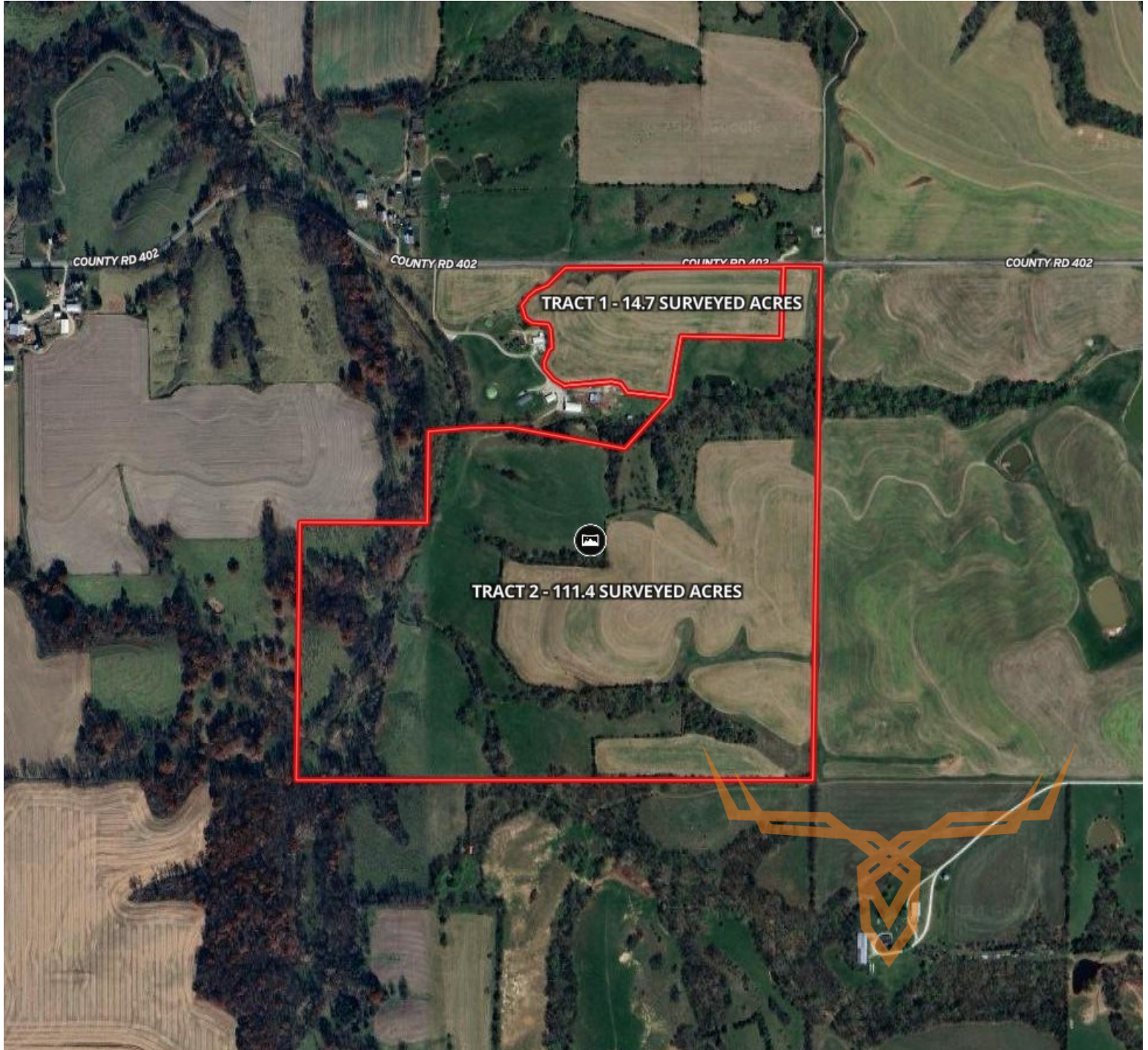
www.Trophy.com
leads@trophy.com



Marion County Missouri Land for Sale at iAuction - Sternke Farm

T R O P H Y
PROPERTIES AND AUCTION
LAND | RECREATIONAL | RESIDENTIAL

www.TrophyPA.com • (855) 573-5263 • leads@trophy.com



The information is believed to be accurate; however, no liability for its accuracy, errors or omissions is assumed. All lines are drawn on maps, photographs, etc. are approximate. Buyers should verify the information to their satisfaction. There are no expressed or implied warranties pertaining to this property. Both real estate (including all improvements, if any) is being sold As Is, Where Is with NO warranties expressed or implied. Please make all inspections and have financing arranged prior to the end of bidding.