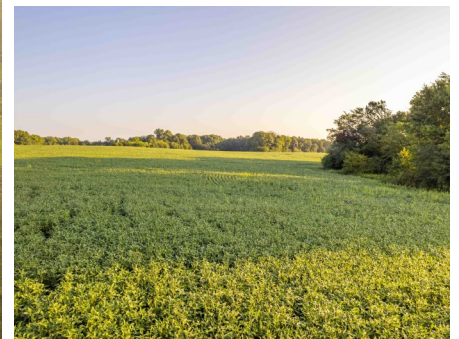


Monroe County Missouri Land for Sale at iAuction - Niemeyer Farm

www.TrophyPA.com • (855) 573-5263 • leads@trophyapa.com



BIDDING ENDS WEDNESDAY, OCTOBER 18TH AT 10:00 AM
 SEE FULL TERMS & CONDITIONS AT WWW.TROPHYPA.COM



PROPERTY ADDRESS:
 00 Monroe Road 450
 Stoutsville, MO 65283

ACRES: 114.9
COUNTY: Monroe

AUCTION DETAILS:

Preview Day Saturday, October 7th 11AM to 12PM.

Bidding Ends Wednesday, October 18th at 10AM.

This 114.9-acre property in Monroe County, MO, near Paris, is ideal for any farmer looking to add to the operation or investor looking to add to their portfolio. According to Farm Service Agency records, a substantial 80.17 acres of this property boasts highly productive cropland, predominantly composed of fertile Leonard and Mexico soils. The land is flat to gently rolling and has had some terrace work with new terrace risers added recently ensuring optimal agricultural potential.

Beyond its agricultural appeal, this property offers a haven for outdoor enthusiasts, with excellent deer and turkey hunting opportunities. Nature's bounty is complemented by the nearby presence of Mark Twain Lake, a renowned destination for water-based recreation, and the convenience of being just 8 miles from the Rt U boat ramp.

For those seeking a getaway or a new place to call home, this property is perfectly situated, with a one-hour drive north leading to Columbia, and a two-hour commute to Chesterfield Valley, offering a balanced blend of rural tranquility and accessibility. This acreage is a canvas ready to accommodate your agricultural, hunting, and recreational aspirations.



PRESENTED BY:

JASON CHINN
Land Specialist - MO
 M: (573) 514-9368
 P: (855) 573-5263 x708
 E: jchinn@trophyapa.com

Trophy Properties and Auction
 15480 Clayton Road
 Suite 101
 Ballwin, MO 63011
www.TrophyPA.com
leads@trophyapa.com



Monroe County Missouri Land for Sale at iAuction - Niemeyer Farm

T R O P H Y
PROPERTIES AND AUCTION
LAND | RECREATIONAL | RESIDENTIAL

www.TrophyPA.com • (855) 573-5263 • leads@trohypa.com



The information is believed to be accurate; however, no liability for its accuracy, errors or omissions is assumed. All lines are drawn on maps, photographs, etc. are approximate. Buyers should verify the information to their satisfaction. There are no expressed or implied warranties pertaining to this property. Both real estate (including all improvements, if any) is being sold As Is, Where Is with NO warranties expressed or implied. Please make all inspections and have financing arranged prior to the end of bidding.