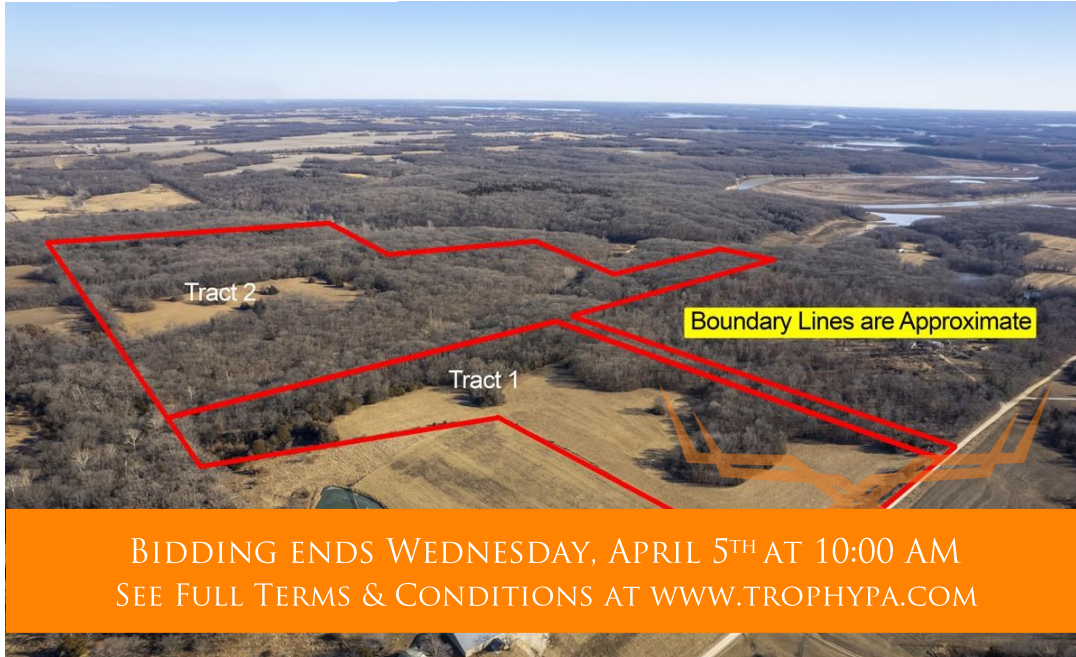




# Monroe County Missouri Land iAuction - Desnoyer Property

www.TrophyPA.com • (855) 573-5263 • leads@trophyapa.com



## PROPERTY ADDRESS:

26286 Monroe 343  
Hunewell, MO 63443

**ACRES:** 135

**COUNTY:** Monroe

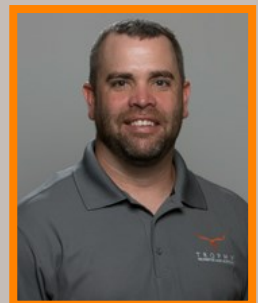
## AUCTION DETAILS:

**Property Preview Saturday, March 25th 10AM to Noon.**

Here is your chance at an amazing Monroe County farm near the Mark Twain Lake. These 135± gently rolling acres consisting of woods, grassland, and a great 2 story log cabin will be offered in 2 tracts. The farm is conveniently located on dead end Monroe Road 343 just 16 miles west of Monroe City, 1 hour 15 minutes north of Columbia, MO, and a little under 2 hours north of Wentzville. The land offers mature woods, great hunting, recreation, new homesites, and numerous other outdoor activities. This truly is a hidden gem. If you're the outdoor enthusiast looking for secluded privacy be sure to check this out. You won't be disappointed!

**Tract 1:** 24± acres with county road frontage, several great building sites, water and electricity at the county road. The ground consists of gently rolling grassland and wooded draws and offers hunting and recreation.

**Tract 2:** 111± acres with a 1,900± sq. ft. two story log cabin set in the northeast part of the farm giving it great seclusion. The cabin has a kitchen, living room, and half bath on the main floor. Upstairs is an open room that is divided by a full bathroom and has plenty of space to add bedrooms to fit your needs. Rounding out the cabin is a walkout unfinished basement with washroom and a great back deck looking out into the woods. The cabin has a gas furnace, electric appliances (included), washer and dryer, and county water. This tract also borders the Corp of Engineers gaining you access to the North Fork of the Salt River and the Mark Twain Lake Recreation ground. The land consists of mostly mature woods with approximately 10 acres of open land that's ideal for hay or food plots.



## PRESENTED BY:

**JASON CHINN**

**Land Specialist**

M: (573) 514-9368

P: (855) 573-5263 x708

E: jchinn@trophyapa.com

**Trophy Properties and Auction**

15480 Clayton Road

Suite 101

Ballwin, MO 63011

www.Trophyapa.com

leads@trophyapa.com

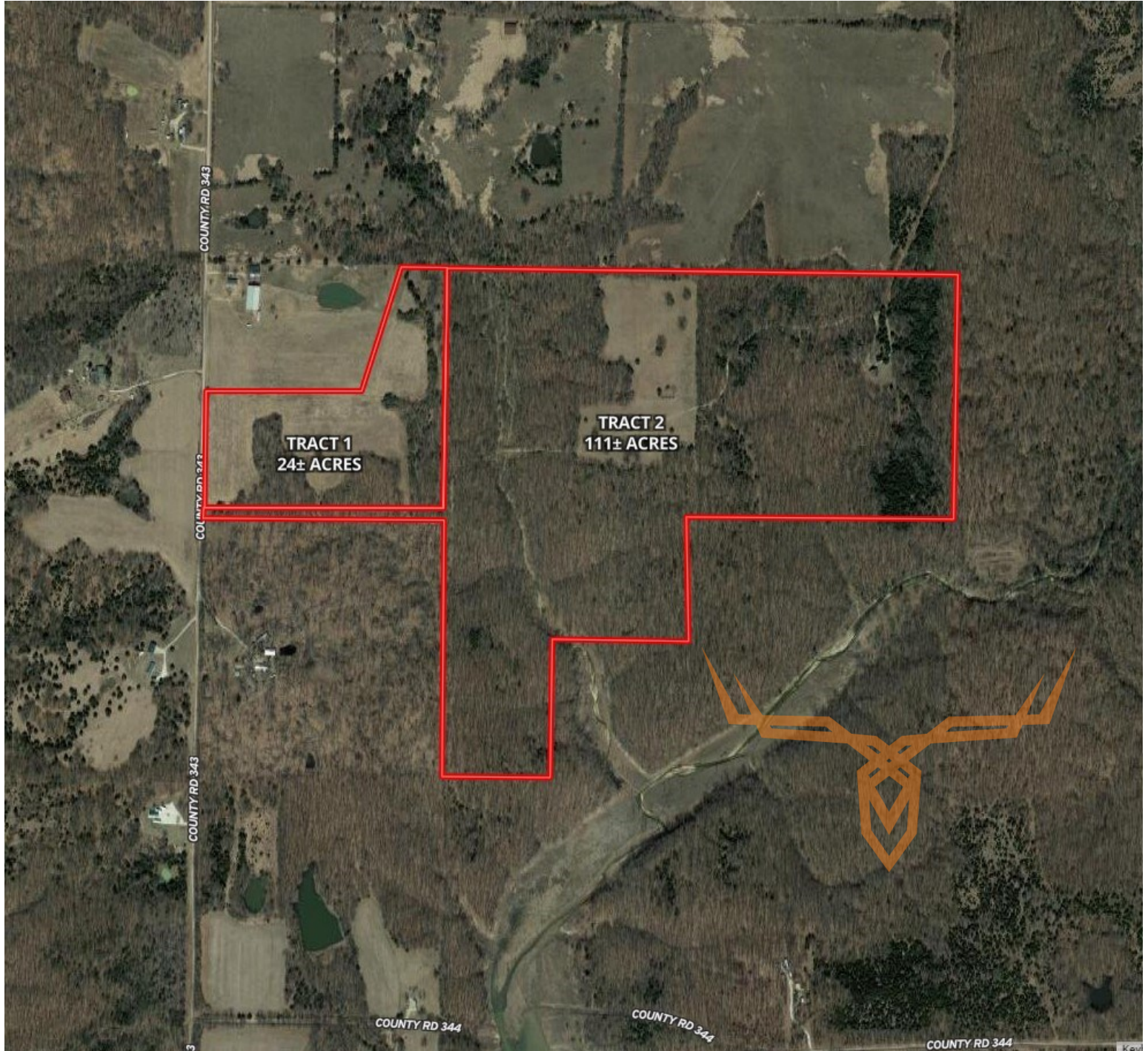




# Monroe County Missouri Land iAuction - Desnoyer Property

**T R O P H Y**  
PROPERTIES AND AUCTION  
LAND | RECREATIONAL | RESIDENTIAL

[www.TrophyPA.com](http://www.TrophyPA.com) • (855) 573-5263 • [leads@trophy.com](mailto:leads@trophy.com)



The information is believed to be accurate; however, no liability for its accuracy, errors or omissions is assumed. All lines are drawn on maps, photographs, etc. are approximate. Buyers should verify the information to their satisfaction. There are no expressed or implied warranties pertaining to this property. Both real estate (including all improvements, if any) is being sold As Is, Where Is with NO warranties expressed or implied. Please make all inspections and have financing arranged prior to the end of bidding.