



Monroe County Missouri Land iAuction - Near Mark Twain Lake

T R O P H Y
PROPERTIES AND AUCTION
LAND | RECREATIONAL | RESIDENTIAL

www.TrophyPA.com • (855) 573-5263 • leads@trophyapa.com



PROPERTY ADDRESS:
00 Highway 154
Soutsville, MO 65283

ACRES: 24.4
COUNTY: Monroe

AUCTION DETAILS:

Property preview Saturday, April 1st 10AM to Noon.

Bidding ends Wednesday, April 12th at 10AM.

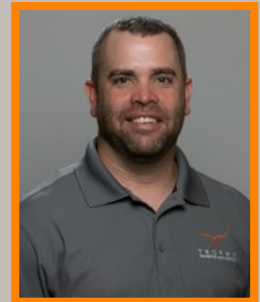
These 24.4 gently rolling acres offered in 4 tracts are located along Highway 154 eight miles east of Paris and eleven miles west of Perry. The land is ideally located between South Fork and Elk Fork boat ramps and just minutes away from several hunter/fisher access points around the Mark Twain Lake. Both Blackjack Marina and Indian Creek Marina are approximately 20 miles away. The acreage is unrestricted allowing for Barndominium, Cabins, and RVs with water and electric along Hwy 154.

Tract 1 – 5.1 gently rolling acres of grassland with highway 154 frontage.

Tract 2 – 7.1 gently rolling acres of grassland with highway 154 frontage and a small pond.

Tract 3 – 7.2 gently rolling acres of grassland and a wooded draw.

Tract 4 – 5.0 gently rolling acres of grassland.



PRESENTED BY:

JASON CHINN
Land & Home Specialist
M: (573) 514-9368
P: (855) 573-5263 x708
E: jchinn@trophyapa.com

Trophy Properties and Auction
15480 Clayton Road
Suite 101
Ballwin, MO 63011

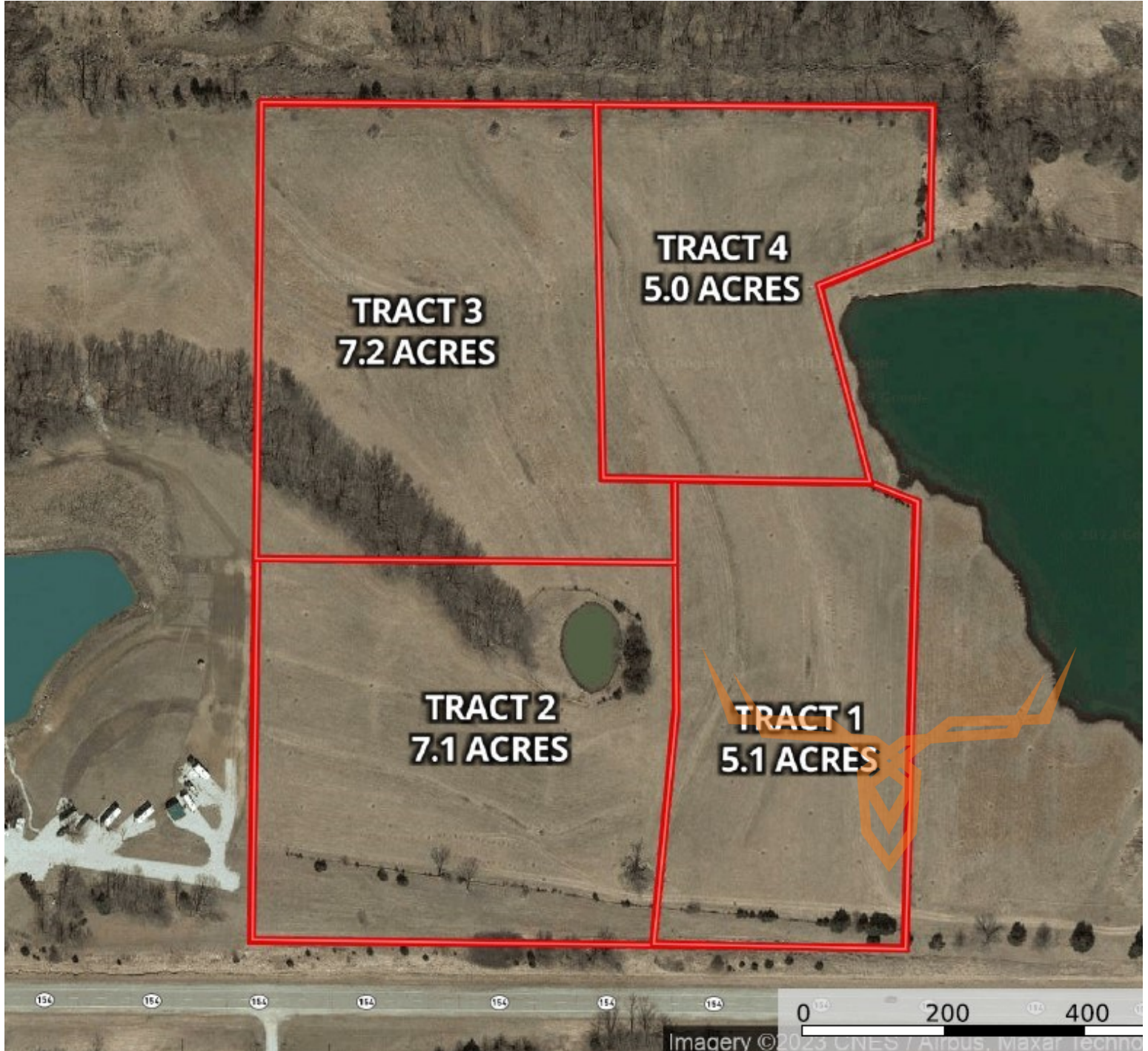
www.Trophyapa.com
leads@trophyapa.com



Monroe County Missouri Land iAuction - Near Mark Twain Lake

T R O P H Y
PROPERTIES AND AUCTION
LAND | RECREATIONAL | RESIDENTIAL

www.TrophyPA.com • (855) 573-5263 • leads@trophyPA.com



The information is believed to be accurate; however, no liability for its accuracy, errors or omissions is assumed. All lines are drawn on maps, photographs, etc. are approximate. Buyers should verify the information to their satisfaction. There are no expressed or implied warranties pertaining to this property. Both real estate (including all improvements, if any) is being sold As Is, Where Is with NO warranties expressed or implied. Please make all inspections and have financing arranged prior to the end of bidding.