



T R O P H Y
PROPERTIES AND AUCTION
LAND | RECREATIONAL | RESIDENTIAL

Montgomery County Missouri Land iAuction - Nelson Property

www.TrophyPA.com • (855) 573-5263 • leads@trophy.com



BIDDING ENDS THURSDAY, APRIL 27TH AT 10:00 AM
SEE FULL TERMS & CONDITIONS AT WWW.TROPHYPA.COM



PROPERTY ADDRESS:
00 Blue Jay Road
Montgomery City, MO 63361

ACRES: 15
COUNTY: Montgomery

AUCTION DETAILS:

This 15± acre parcel is the perfect opportunity for an outdoor enthusiast! Located just minutes from Montgomery City and 45 minutes from Columbia and Wentzville, this property offers plenty of room to explore and enjoy. Unrestricted and wooded, this property is ideal for hunting, hiking, camping, ATVing and more! The property is flat to gently rolling and offers a variety of tree species, providing plenty of shelter and a variety of wildlife. With plenty of room and lots of potential, this is the perfect spot to build your dream home or cabin!



PRESENTED BY:

JASON KNEIB
Land & Home Specialist
M: (636) 295-7047
P: (855) 573-5263 x706
E: jknieb@trophy.com

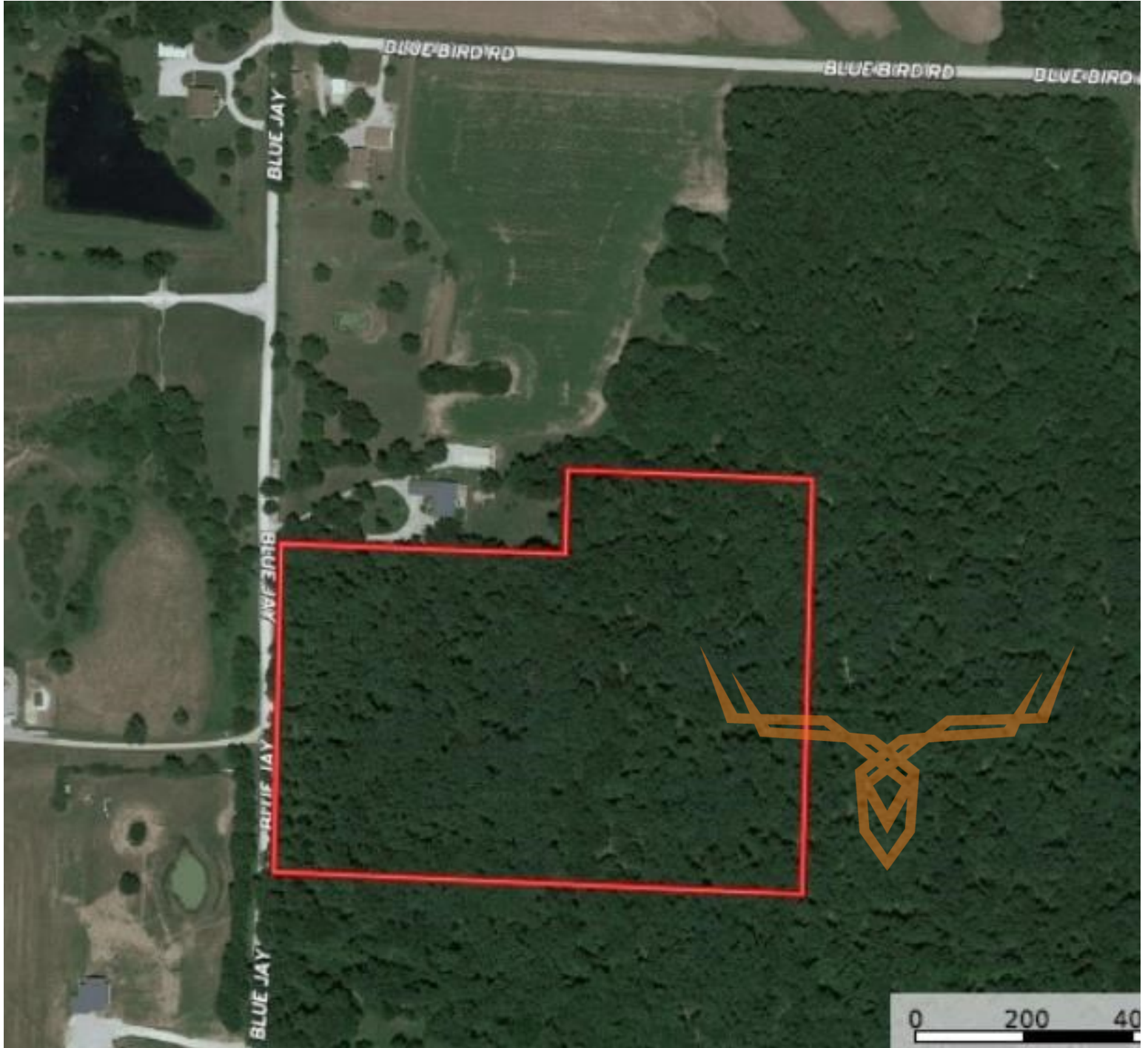
Trophy Properties and Auction
15480 Clayton Road
Suite 101
Ballwin, MO 63011
www.TrophyPA.com
leads@trophy.com



T R O P H Y
PROPERTIES AND AUCTION
LAND | RECREATIONAL | RESIDENTIAL

Montgomery County Missouri Land iAuction - Nelson Property

www.TrophyPA.com • (855) 573-5263 • leads@trophyPA.com



The information is believed to be accurate; however, no liability for its accuracy, errors or omissions is assumed. All lines are drawn on maps, photographs, etc. are approximate. Buyers should verify the information to their satisfaction. There are no expressed or implied warranties pertaining to this property. Both real estate (including all improvements, if any) is being sold As Is, Where Is with NO warranties expressed or implied. Please make all inspections and have financing arranged prior to the end of bidding.