



# Montgomery County Missouri Land for Sale at iAuction - Frazier Farm

**T R O P H Y**  
PROPERTIES AND AUCTION  
LAND | RECREATIONAL | RESIDENTIAL

www.TrophyPA.com • (855) 573-5263 • leads@trophy.com



**BIDDING ENDS WEDNESDAY, MARCH 13<sup>TH</sup> AT 10:00 AM**  
SEE FULL TERMS & CONDITIONS AT [WWW.TROPHYPA.COM](http://WWW.TROPHYPA.COM)

**PROPERTY ADDRESS:**

00 Blue Bird Road  
Montgomery City, MO 63361

**ACRES:** 71.3 Surveyed

**COUNTY:** Montgomery

**AUCTION DETAILS:**

71.3 flat to gently rolling surveyed acres of productive farmland and woods near Montgomery City. Farm Service Agency shows there to be 45.34 acres of fertile cropland, predominantly featuring Mexico silt loam, Mexico silty clay, and Keswick clay loam soils. The farm is free and clear of any and all tenants and leases.

In addition to its agricultural potential, the property offers excellent hunting and recreation possibilities. The blend of cropland and wooded areas creates an attractive environment for outdoor enthusiasts. Moreover, the strategic location, just 2.5 miles south of Montgomery City and 39 miles from Wentzville, enhances accessibility for both farming operations and personal convenience.

This parcel not only caters to the agricultural-minded individual but also provides an opportunity for creating a country home in a serene setting.



**PRESENTED BY:**

**JASON WALLINGFORD**

President - Auction Division

M: (314) 882-6971

P: (855) 573-5263 x702

E: [jasonw@trophy.com](mailto:jasonw@trophy.com)

**Trophy Properties and Auction**

640 Cepi Drive

Suite 100

Chesterfield, MO 63005

[www.Trophy.com](http://www.Trophy.com)

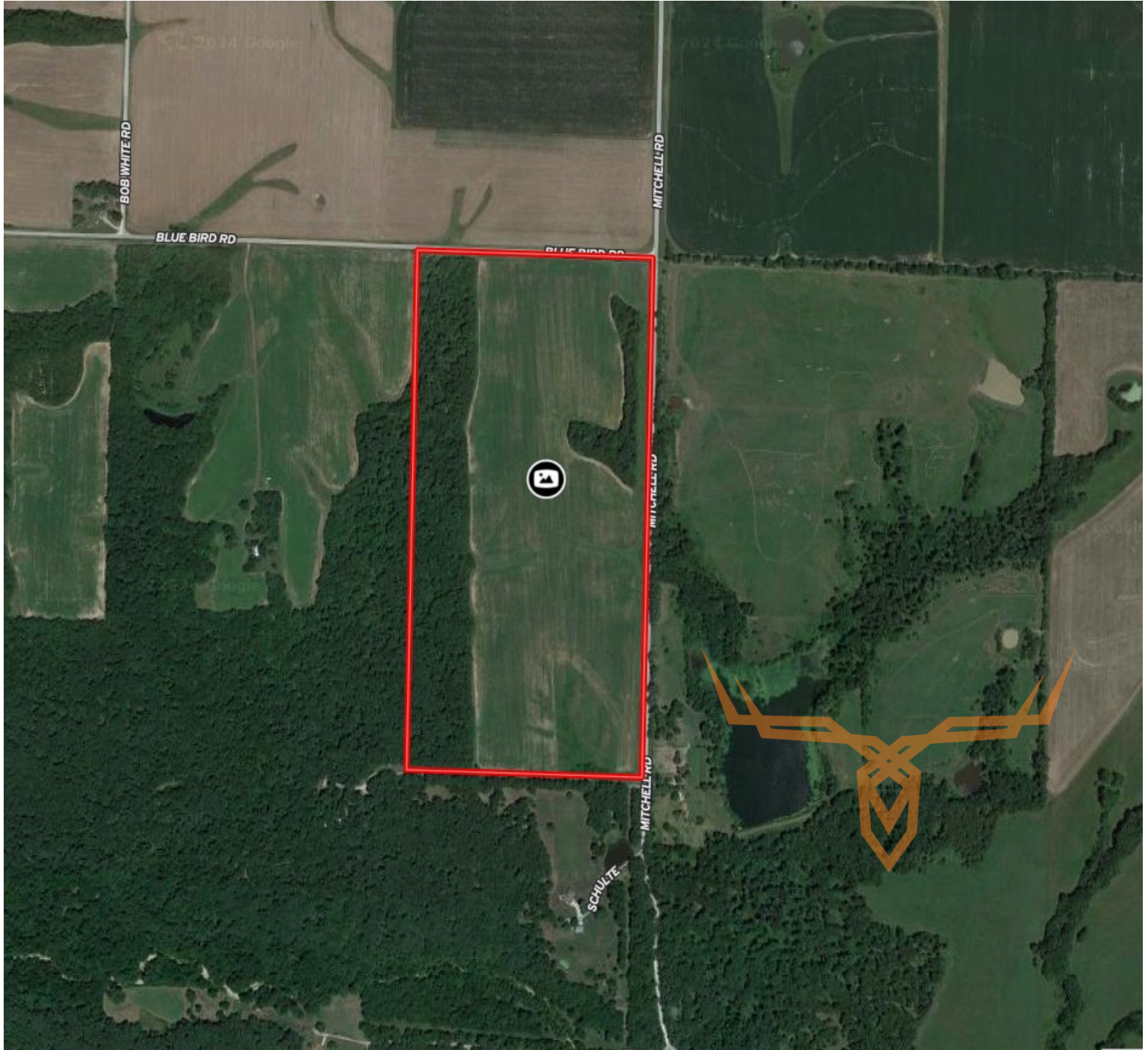
[leads@trophy.com](mailto:leads@trophy.com)



# Montgomery County Missouri Land for Sale at iAuction - Frazier Farm

**TROPHY**  
PROPERTIES AND AUCTION  
LAND | RECREATIONAL | RESIDENTIAL

[www.TrophyPA.com](http://www.TrophyPA.com) • (855) 573-5263 • [leads@trophy.com](mailto:leads@trophy.com)



The information is believed to be accurate; however, no liability for its accuracy, errors or omissions is assumed. All lines are drawn on maps, photographs, etc. are approximate. Buyers should verify the information to their satisfaction. There are no expressed or implied warranties pertaining to this property. Both real estate (including all improvements, if any) is being sold As Is, Where Is with NO warranties expressed or implied. Please make all inspections and have financing arranged prior to the end of bidding.