



**T R O P H Y**  
PROPERTIES AND AUCTION  
LAND | RECREATIONAL | RESIDENTIAL

# 1.9± Vacant Wooded Lot with Lake Access for Sale - Morgan County

www.TrophyPA.com • (855) 573-5263 • leads@trophyapa.com



**PROPERTY ADDRESS:**

Lot 33 - 00 Cherokee Drive  
Rocky Mount, MO 65072

**PRICE:** \$19,500

**ACRES:** 1.9±

**COUNTY:** Morgan

**PROPERTY HIGHLIGHTS:**

- 1.9± Acres
- Subdivision Lake Access
- Community Park
- NO Subdivision Restrictions!
- Gated Subdivision

**PROPERTY DESCRIPTION:**

1.9± acre build site with access to the Lake of the Ozarks! This wooded lot has NO subdivision restrictions and access to a boat ramp just down the road as well as a park. The subdivision is gated for added security and seclusion. Great location to build a cabin or barndominium.



**PRESENTED BY:**

**ANTHONY POZZI**

**Realtor/Marketing Coordinator**

M: (724) 678-8159

P: (855) 573-5263 x733

E: apozzi@trophyapa.com

**MICHELLE BROOKS**

**Residential Specialist**

M: (636) 359-1710

P: (855) 573-5263 x749

E: mbrooks@trophyapa.com

**Trophy Properties and Auction**

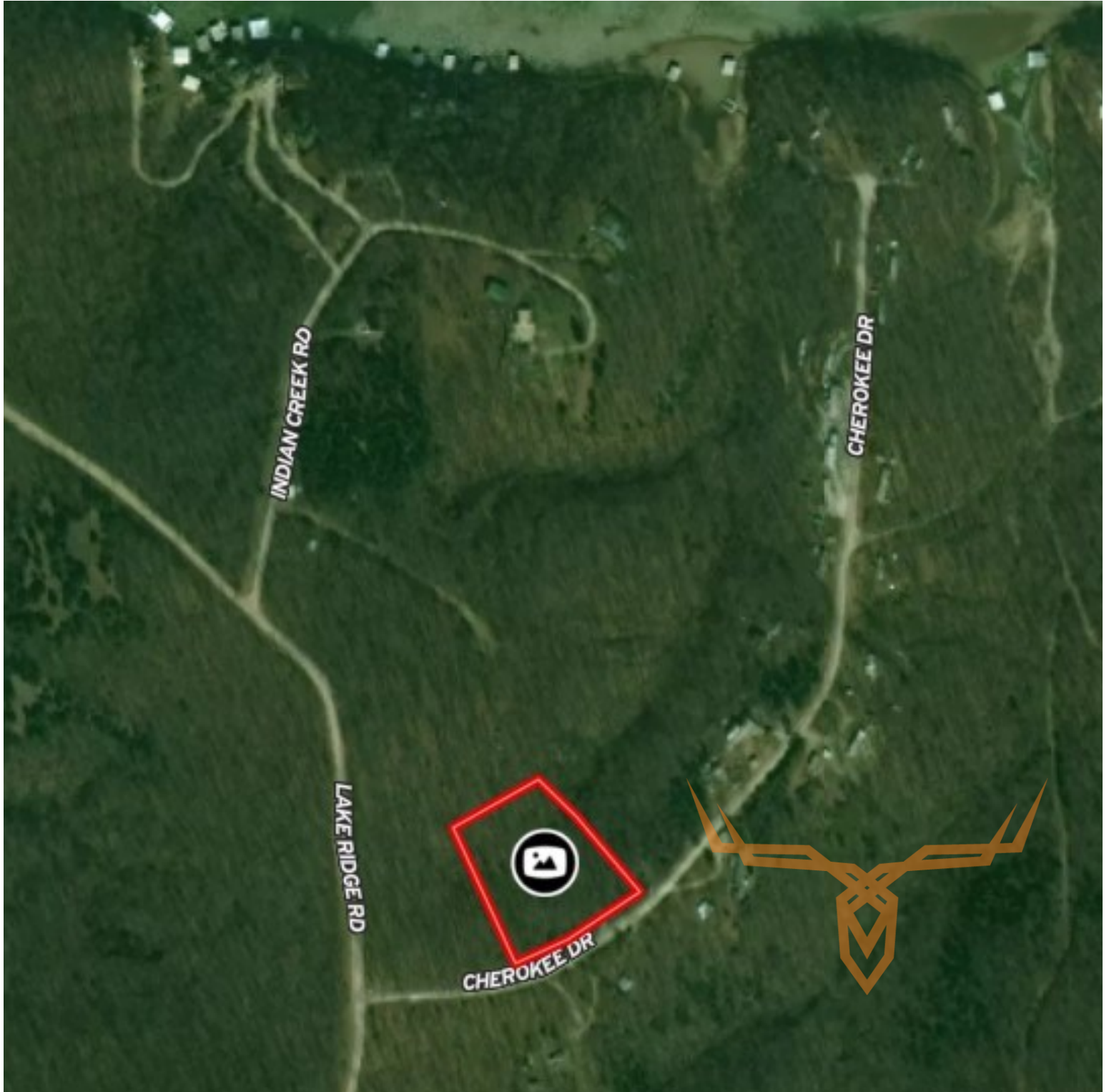
640 Cepi Drive, Suite 100  
Chesterfield, MO 63005



**T R O P H Y**  
PROPERTIES AND AUCTION  
LAND | RECREATIONAL | RESIDENTIAL

# 1.9± Vacant Wooded Lot with Lake Access for Sale - Morgan County

[www.TrophyPA.com](http://www.TrophyPA.com) • (855) 573-5263 • [leads@trophy.com](mailto:leads@trophy.com)



Broker does not guarantee the accuracy of sq. ft., lot size, or other information, buyer is advised to independently verify the accuracy of information through personal inspection and with appropriate professionals