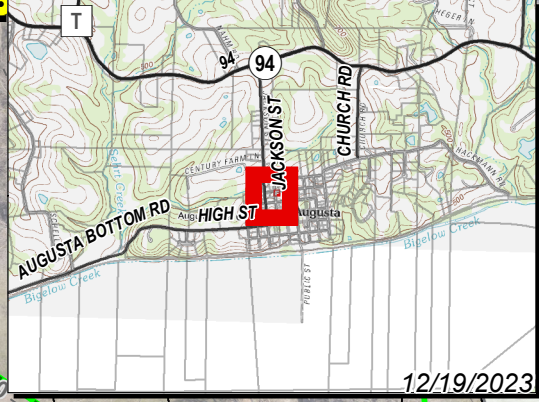
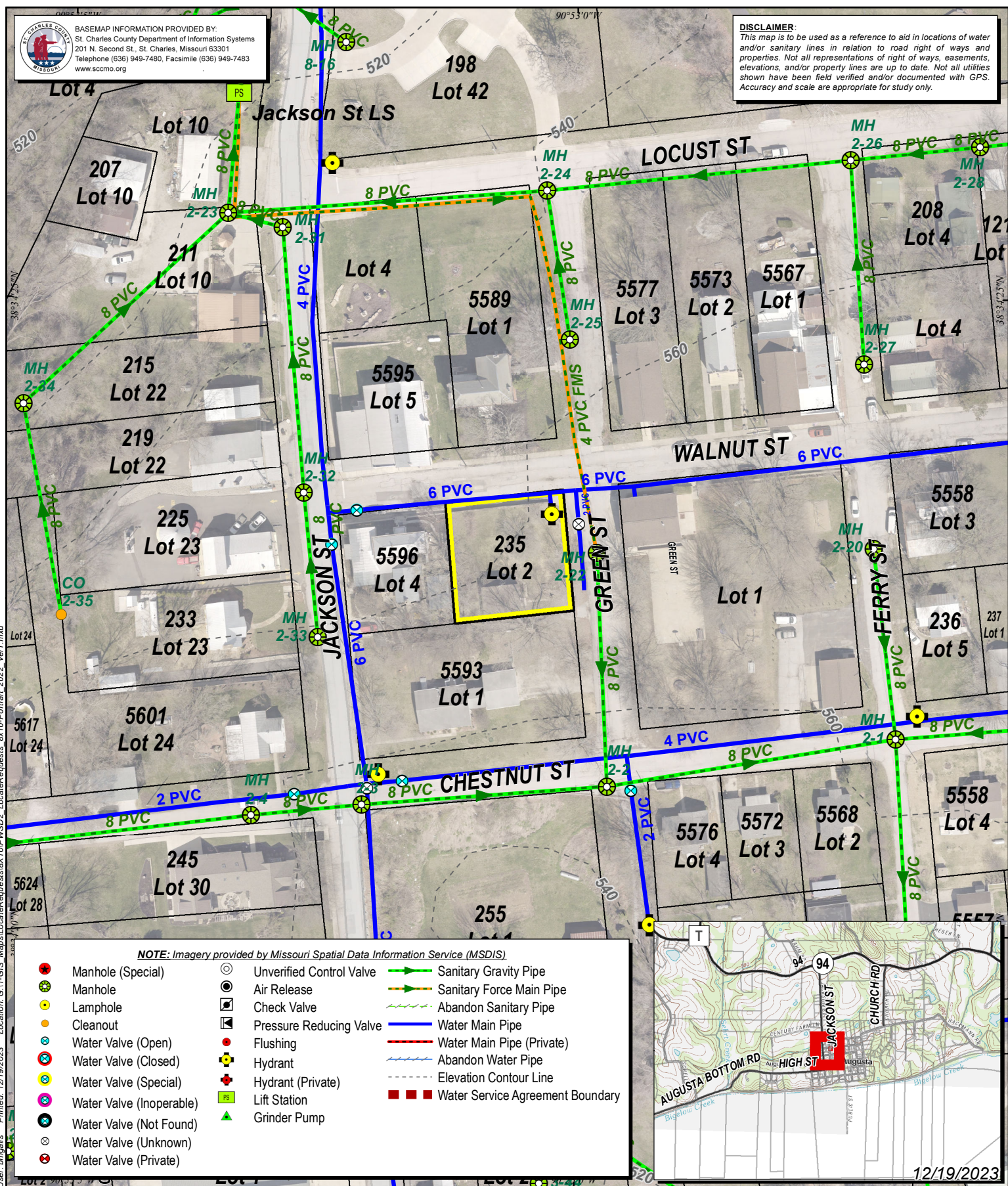




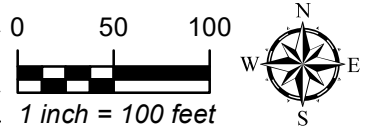
BASEMAP INFORMATION PROVIDED BY:
St. Charles County Department of Information Systems
201 N. Second St., St. Charles, Missouri 63301
Telephone (636) 949-7480, Facsimile (636) 949-7483
www.sccmo.org

DISCLAIMER:
This map is to be used as a reference to aid in locations of water and/or sanitary lines in relation to road right of ways and properties. Not all representations of right of ways, easements, elevations, and/or property lines are up to date. Not all utilities shown have been field verified and/or documented with GPS. Accuracy and scale are appropriate for study only.



Public Water Supply District No.2
of St. Charles County, MO
Providing and Protecting our Most Precious Resource

Purpose: **Utility Locations**
Prepared for: **Trophy Residential Properties**
Attention: **Serena Huntebrinker**
Location: **235 Green Street, Augusta Mo**



User: bingale Printed: 12/19/2023 Location: G:\GIS Maps\LocateRequests\8X10\PSD2_LocateRequests_8x10_Portal_2022_Ver1.mxd