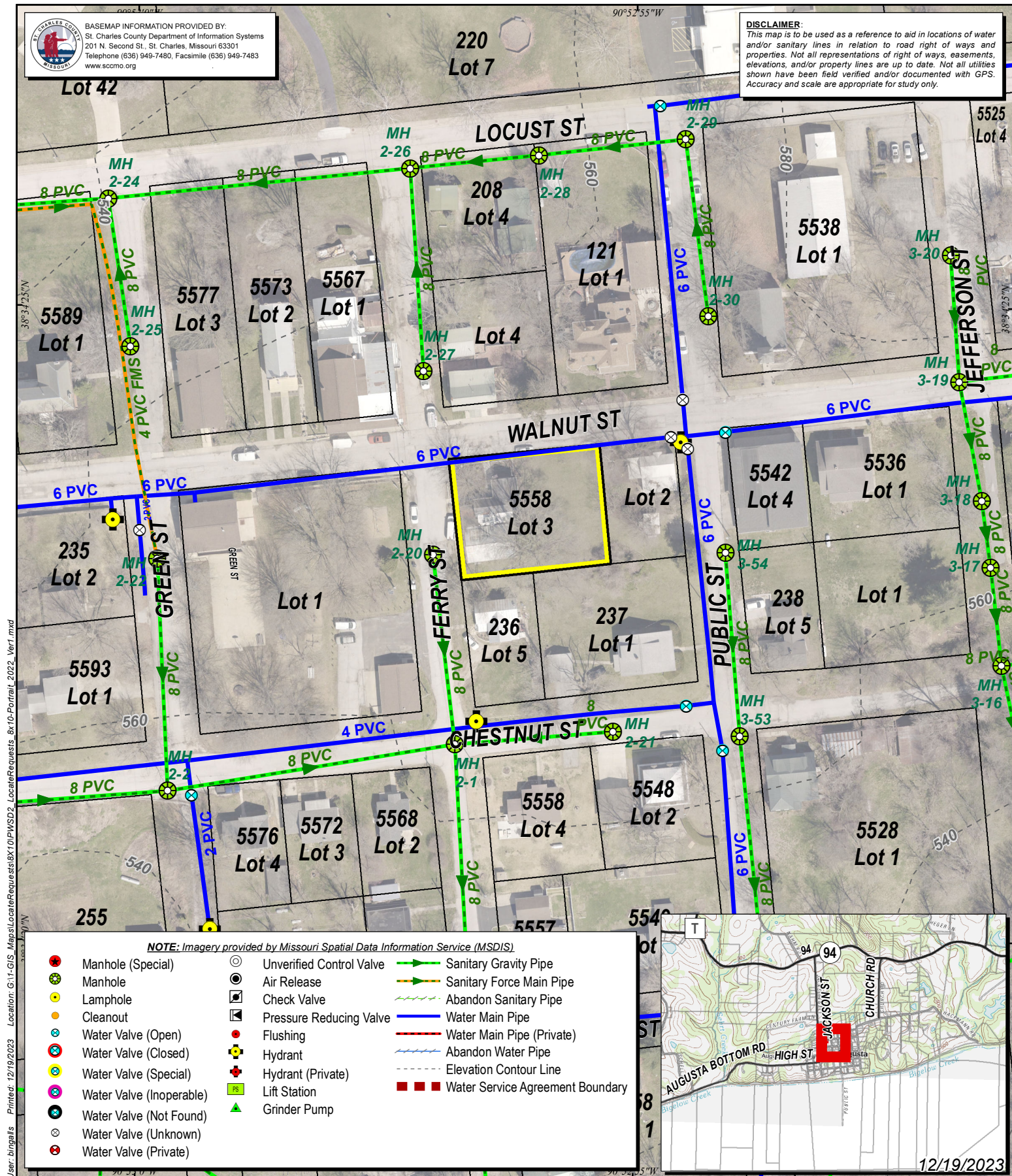




BASEMAP INFORMATION PROVIDED BY:
St. Charles County Department of Information Systems
201 N. Second St., St. Charles, Missouri 63301
Telephone (636) 949-7480, Facsimile (636) 949-7483
www.sccmo.org

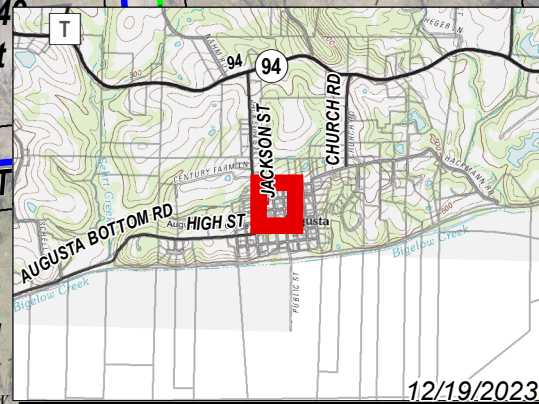
DISCLAIMER:

This map is to be used as a reference to aid in locations of water and/or sanitary lines in relation to road right of ways and properties. Not all representations of right of ways, easements, elevations, and/or property lines are up to date. Not all utilities shown have been field verified and/or documented with GPS. Accuracy and scale are appropriate for study only.



NOTE: Imagery provided by Missouri Spatial Data Information Service (MSDIS).

- | | | |
|----------------------------|----------------------------|------------------------------------|
| ● Manhole (Special) | ○ Unverified Control Valve | → Sanitary Gravity Pipe |
| ● Manhole | ○ Air Release | → Sanitary Force Main Pipe |
| ● Lamphole | ○ Check Valve | → Abandon Sanitary Pipe |
| ● Cleanout | ○ Pressure Reducing Valve | → Water Main Pipe |
| ○ Water Valve (Open) | ● Flushing | → Water Main Pipe (Private) |
| ○ Water Valve (Closed) | ● Hydrant | → Abandon Water Pipe |
| ○ Water Valve (Special) | ● Hydrant (Private) | → Elevation Contour Line |
| ○ Water Valve (Inoperable) | ● Lift Station | ■ Water Service Agreement Boundary |
| ○ Water Valve (Not Found) | ● Grinder Pump | |
| ○ Water Valve (Unknown) | | |
| ○ Water Valve (Private) | | |



12/19/2023



Public Water Supply District No.2
of St. Charles County, MO
Providing and Protecting our Most Precious Resource

Purpose: **Utility Locations**
Prepared for: **Trophy Residential Properties**
Attention: **Serena Huntebrinker**
Location: **5558 Walnut Street, Augusta Mo**

0 50 100
1 inch = 100 feet

