

TROPHY

— RESIDENTIAL —

PROPERTIES



ADDRESS: 138 CHURCH STREET, EOLIA, MO 63344

PRICE: \$100,000

BEDROOMS: 2

BATHROOMS: 1

LIVING AREA: 916

YEAR BUILT: 1910

SCHOOLS DIST: Pike R-III

TAXES/TAX YR: 604/2022

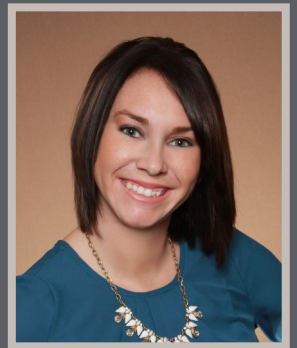
HOA FEES: N/A

PROPERTY HIGHLIGHTS:

- 2 Bedroom
- 1 Bathroom
- Enclosed Back Porch
- Large Level Half Acre Lot
- Public Water
- Public Sewer
- Clopton School District
- 30 X 40 Shed with Concrete and Electric

PROPERTY DESCRIPTION:

Welcome home! This 2 bedroom/1 bath home features an eat in kitchen, living room and large enclosed back porch. The large level lot is over half an acre and feels very private with plenty of space for a garden. The spacious 30x40 detached garage has concrete flooring, 9 ft doors, and electric. The is also and additional garden shed that could also work great for a chicken coop. This would be a great starter home in the Clopton School District. Home has public water and sewer. The propane tank is owned and will convey with sale along with all appliances excluding the washing machine.



PRESENTED BY:

CASSANDRA MAGRUDER

Residential Specialist

M: (573) 275-5887

P: (855) 573-5263 x 741

E: cmagruder@trophyproperties.com

Trophy Residential Properties

A Division of Trophy Properties and Auction

15480 Clayton Road, Ste. 101

Ballwin, MO 63011

(855) 573-5263

www.trophyproperties.com

TROPHY

RESIDENTIAL
PROPERTIES



Broker does not guarantee the accuracy of sq. ft., lot size, or other information, buyer is advised to independently verify the accuracy of information through personal inspection and with appropriate professionals.