

TROPHY

RESIDENTIAL

PROPERTIES

PRICE IMPROVED



ADDRESS: 19651 PIKE 226, EOLIA, MO 63344

PRICE: \$250,000

BEDROOMS: 3

BATHROOMS: 3

LIVING AREA: 1320

YEAR BUILT: 1973

SCHOOLS DIST: Clopton R-3

TAXES/TAX YR: \$864/2021

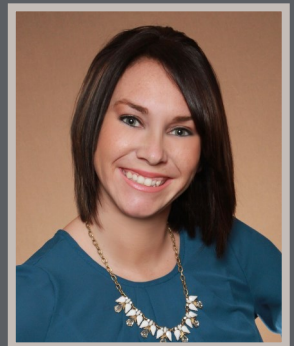
HOA FEES: N/A

PROPERTY HIGHLIGHTS:

- Open Floor Plan
- 30x30 Shed
- 3 Acres
- Level Lot
- 3 Bedrooms
- 3 Full Bathrooms

PROPERTY DESCRIPTION:

Don't miss your opportunity to make this great 3 bed 3 bath home in Lockard (Lakeview Estates) all yours! This home sits in a great location on a large, level, three-acre lot. Entering the front door, you are greeted by an open floor plan, recently installed laminate plank flooring, fresh paint, and great views. The kitchen features all stainless-steel appliances, plenty of counterspace and fresh white cabinets. The master bedroom is spacious with a recently updated master bath. The hall bath was also recently updated. The partially finished walkout basement has an enormous bedroom and additional full bath. There is an abundance of storage as well. 2 Car carport with storage area. 30x30 shop with concrete, electric and wood furnace. Great Neighbors and Clopton school district are just a couple of bonuses.



PRESENTED BY:

CASSANDRA MAGRUDER

Residential Specialist

M: (573) 278-5887

P: (855) 573-5263 x 741

E: cmagruder@trophyproperties.com

Trophy Residential Properties

A Division of Trophy Properties and Auction

15480 Clayton Road, Ste. 101

Ballwin, MO 63011

(855) 573-5263

www.trophyproperties.com

TROPHY

RESIDENTIAL
PROPERTIES



Broker does not guarantee the accuracy of sq. ft., lot size, or other information, buyer is advised to independently verify the accuracy of information through personal inspection and with appropriate professionals.