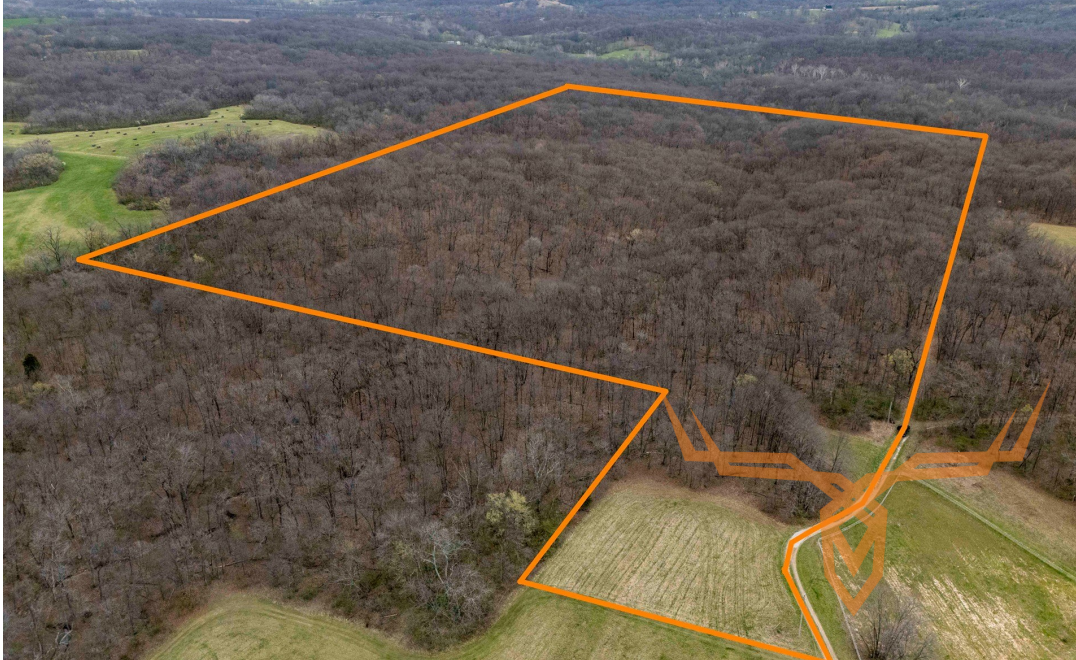




**T R O P H Y**  
PROPERTIES AND AUCTION  
LAND | RECREATIONAL | RESIDENTIAL

# 50 Acres of Outdoor Paradise with Hunting & Recreational Opportunities—Pike County

[www.TrophyPA.com](http://www.TrophyPA.com) • (855) 573-5263 • [leads@trophyapa.com](mailto:leads@trophyapa.com)



## PROPERTY ADDRESS:

00 Pike 224  
Eolia, MO 63344

**PRICE:** \$437,500

**ACRES:** 50±

**COUNTY:** Pike

## PROPERTY HIGHLIGHTS:

- Deer Hunting
- Turkey Hunting
- Timber
- Recreation
- Pike County

## PROPERTY DESCRIPTION:

Looking for the perfect blend of hunting, recreation, and proximity to St. Louis? This 50-acre farm offers the ultimate outdoor experience, just 45 minutes away from Chesterfield. Whether you're an avid hunter or seeking a peaceful retreat, this property has it all!



## PRESENTED BY:

**JASON KNEIB**

**Land Specialist**

M: (636) 295-7047

P: (855) 573-5263 x706

E: [jkneib@trophyapa.com](mailto:jkneib@trophyapa.com)

**Trophy Properties and Auction**

640 Cepi Drive, Suite 100

Chesterfield, MO 630056

[www.Trophyapa.com](http://www.Trophyapa.com)

[leads@trophyapa.com](mailto:leads@trophyapa.com)



# 50 Acres of Outdoor Paradise with Hunting & Recreational Opportunities—Pike County

[www.TrophyPA.com](http://www.TrophyPA.com) • (855) 573-5263 • [leads@trophy.com](mailto:leads@trophy.com)

Missouri, AC +/-



Boundary

