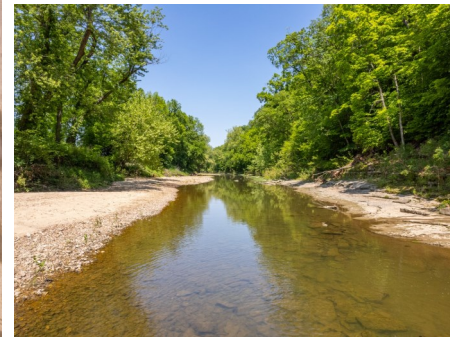




T R O P H Y
PROPERTIES AND AUCTION
LAND | RECREATIONAL | RESIDENTIAL

Prime 148.3 Acre Hunting Property for Sale - Pike/Ralls County

www.TrophyPA.com • (855) 573-5263 • leads@trophyapa.com



PROPERTY ADDRESS:

6811 Old Hwy 61
Frankford, MO 63441

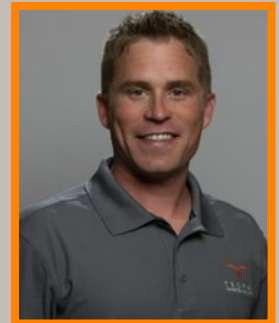
PRICE: \$925,000

ACRES: 148.3

COUNTY: Pike/Ralls

PROPERTY HIGHLIGHTS:

- 148.3 acres Located in Pike & Ralls County
- Awesome HUNTING FARM with PROVEN trail cam history
- Approx. 30 acres of tillable, Menfro Soils, 5-9% slopes
- Lots of Deer and Turkey on this property, check out the pics!
- 4-5 smaller food-plots, 2 wildlife ponds
- Wet weather creek runs through middle of property
- Spencer creek defines the entire western border
- Beautiful Views from the bluff above creek
- 40x60 shed with electric and camper hookup
- Shed is great for equipment storage or potential to finish for living space
- Rural water nearby
- Nice building sites
- 5 banks blinds covey with sale
- Big rock outcroppings on bluff overlooking Spencer Creek
- Great trail system to access entire property
- Great LOCATION in proximity to STL or Hannibal
- 60 mi to Wentzville
- 17 mi to Hannibal
- 36 mi to Quincy
- 16 mi to Bowling Green
- No restrictions



PRESENTED BY:

JOE OGDEN

Land & Home Specialist - MO

M: (636) 358-3567

P: (855) 573-5263 x707

E: jogden@trophyapa.com

Trophy Properties and Auction

15480 Clayton Road

Suite 101

Ballwin, MO 63011

www.Trophyapa.com

leads@trophyapa.com



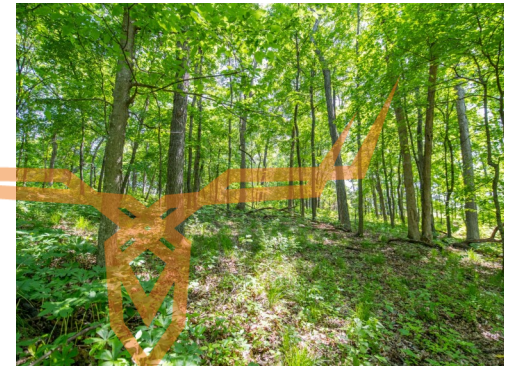
T R O P H Y
PROPERTIES AND AUCTION
LAND | RECREATIONAL | RESIDENTIAL

Prime 148.3 Acre Hunting Property for Sale - Pike/Ralls County

www.TrophyPA.com • (855) 573-5263 • leads@trohypa.com

PROPERTY DESCRIPTION:

Awesome Hunting farm for Deer & Turkey in a prime location!! Located in northern Pike County, part of this property also lays in Ralls County along Spencer Creek. This well managed neighborhood is known for producing some trophy bucks and consistently has gobbling turkeys in the spring. The farm offers approx. 30 acres of tillable with the balance in food plots, wooded ridges and brush. Check out the trail pics, this property is loaded with wildlife!! A wet weather creek runs through the middle of the timber and 2 wildlife ponds provide ample water. Spencer Creek defines the entire western boundary offering big rock outcroppings on the bluff with great views to watch the sunset. A newer 40x60 shed with a 12x12 porch situated on the north end of the property offers storage for equipment or could be potentially finished living space making an excellent hunting camp. Rural water nearby. 5 Banks blinds currently on the property will convey with sale. Extensive trail system provides great access throughout the property. Great location in proximity to Wentzville or Hannibal, plenty of build sites for a



MOULDER 1 CAMERA 5 24 SEP 2



1 CAMERA 3 17 SEP 2021 10:11



AMERA 4 13 FEB 2021

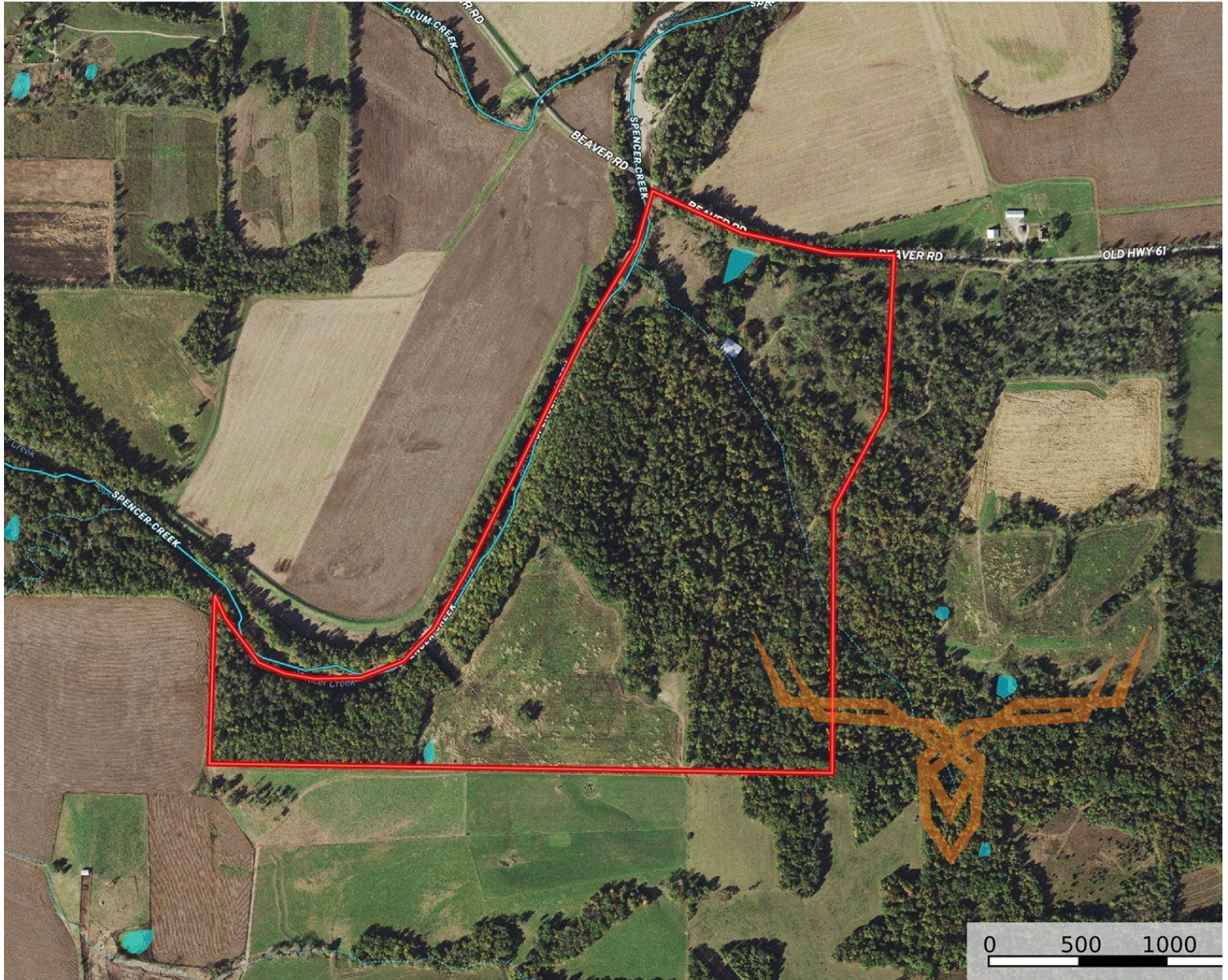
Broker does not guarantee the accuracy of sq. ft., lot size, or other information, buyer is advised to independently verify the accuracy of information through personal inspection and with appropriate professionals



T R O P H Y
PROPERTIES AND AUCTION
LAND | RECREATIONAL | RESIDENTIAL

Prime 148.3 Acre Hunting Property for Sale - Pike/Ralls County

www.TrophyPA.com • (855) 573-5263 • leads@trophy.com



am, milltent
— River/Creek
Water Body

id. The information contained
deemed to be reliable.
Land id™ Services make
completeness or accuracy

Broker does not guarantee the accuracy of sq. ft., lot size, or other information, buyer is advised to independently verify the accuracy of information through personal inspection and with appropriate professionals