



Randolph County Missouri Land for Sale at iAuction - Duris Farm

T R O P H Y
PROPERTIES AND AUCTION
LAND | RECREATIONAL | RESIDENTIAL

www.TrophyPA.com • (855) 573-5263 • leads@trophy.com



PROPERTY ADDRESS:

2468 Co Rd 2415
Armstrong, MO 65230

ACRES: 110.3

COUNTY: Randolph

AUCTION DETAILS:

Preview Day Saturday, June 8th 10AM to 2PM.

Private rural retreat, weekend family get away or full-time farm living in Randolph County is now up for auction. This property spans approximately 110.3 acres, featuring a 40x80 Metal building with living quarters. The living space includes six bedrooms, two bathrooms, a great room ideal for entertaining and an approximately 38x40 garage to store your UTV's and equipment. Two ponds and mature timber on the farm. The property has been managed extensively for quality whitetail deer, turkey, and small game hunting. Two redneck blinds are strategically placed and ready to hunt.

FSA shows cropland of 58.13 acres. Recently planted native grasses create excellent bedding and nesting areas for wildlife. This farm has a nice mix of agriculture, woods, and wildlife habitat. The home is very secluded, providing a private and peaceful setting, yet remains conveniently located. It is less than an hour's drive from Columbia, Missouri, and approximately two hours from both Chesterfield and Kansas City.

This farm offers a blend of income producing farmland, excellent hunting, recreation opportunities and comfortable living quarters, making it a versatile and appealing option for potential buyers. Whether you're interested in farming, hunting, or simply enjoying a secluded rural lifestyle, this property has much to offer.



PRESENTED BY:

JEFF GENTRY

Land Specialist

M: (314) 308-0843

P: (855) 573-5263 x721

E: jgentry@trophy.com

Trophy Properties and Auction

640 Cepi Drive

Suite 100

Chesterfield, MO 63005

www.Trophy.com

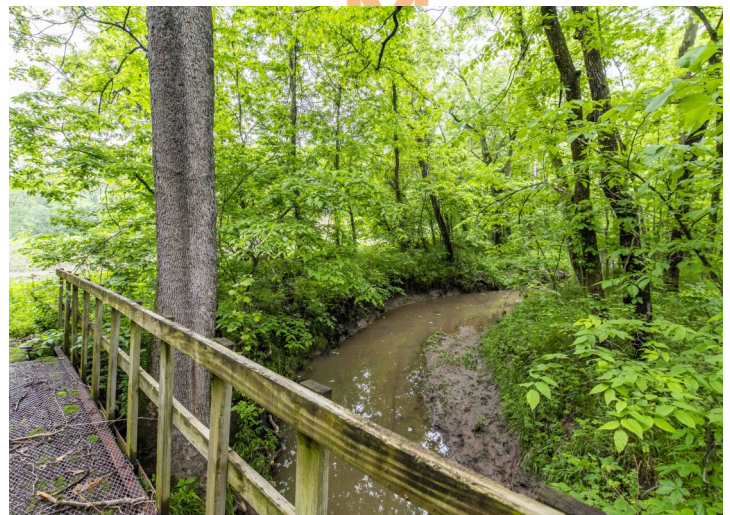
leads@trophy.com



Randolph County Missouri Land for Sale at iAuction - Duris Farm

TROPHY
PROPERTIES AND AUCTION
LAND | RECREATIONAL | RESIDENTIAL

www.TrophyPA.com • (855) 573-5263 • leads@trophy.com

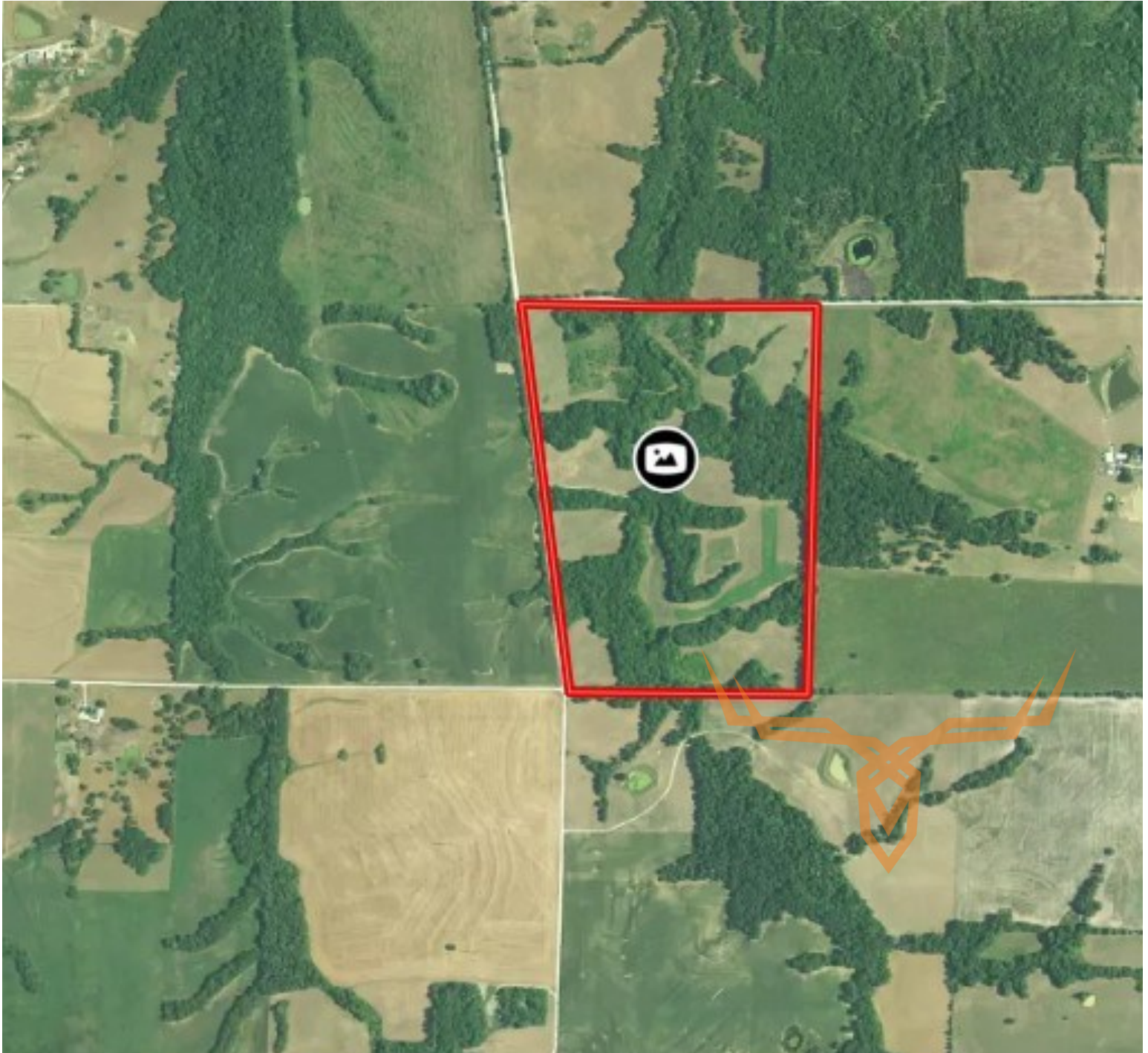




Randolph County Missouri Land for Sale at iAuction - Duris Farm

T R O P H Y
PROPERTIES AND AUCTION
LAND | RECREATIONAL | RESIDENTIAL

www.TrophyPA.com • (855) 573-5263 • leads@trophy.com



The information is believed to be accurate; however, no liability for its accuracy, errors or omissions is assumed. All lines are drawn on maps, photographs, etc. are approximate. Buyers should verify the information to their satisfaction. There are no expressed or implied warranties pertaining to this property. Both real estate (including all improvements, if any) is being sold As Is, Where Is with NO warranties expressed or implied. Please make all inspections and have financing arranged prior to the end of bidding.