



Reynolds County Missouri Land for Sale at iAuction - Logan Creek Ranch II

www.TrophyPA.com • (855) 573-5263 • leads@trophyapa.com



BIDDING ENDS TUESDAY, MARCH 26TH AT 10:00 AM
SEE FULL TERMS & CONDITIONS AT WWW.TROPHYPA.COM

PROPERTY ADDRESS:

00 Hwy K
Ellington, MO 63638

ACRES: 103.76

COUNTY: Reynolds

AUCTION DETAILS:

Preview Day Saturday, March 16th 11AM to 1PM.

These 103.76 flat to gently rolling acres offered in two tracts are located in the south-central part of Reynolds County just east of Ellington on highway K. The farm represents improved pastureland, cattle tight fences, mature hardwoods, and the picturesque rock bottom Logan Creek. The farm is improved with an old-barn, deep well with hydrant and cattle waterer, and small pond. Other nearby attractions are Clearwater Lake (22+/- miles), Current River (25+/- miles), Van Buren, MO (26+/- miles), Eminence, MO. (26+/- miles).

If you're looking to increase your livestock numbers or a place to recreate and unwind be sure to give Logan Creek Ranch II a hard look. You won't be disappointed.

Tract 1: 45.67 flat to gently rolling acres consisting of fenced grassland, hardwoods, pond, and Logan Creek.

Tract 2: 58.09 flat to gently rolling acres consisting of fenced grassland, hardwoods, barn, deep well, and Logan Creek.



PRESENTED BY:

PHIL BROWN

Broker/Partner

M: (314) 753-7444

P: (855) 573-5263 x700

E: philbrown@trophyapa.com

SARA BOLLMANN

Home & Land Specialist

M: (636) 369-2224

P: (855) 573-5263 x752

E: sbollmann@trophyapa.com

Trophy Properties and Auction

640 Cepi Drive, Suite 100

Chesterfield, MO 63005

www.Trophyapa.com

leads@trophyapa.com



Reynolds County Missouri Land for Sale at iAuction - Logan Creek Ranch II

T R O P H Y
PROPERTIES AND AUCTION
LAND | RECREATIONAL | RESIDENTIAL

www.TrophyPA.com • (855) 573-5263 • leads@trophyPA.com



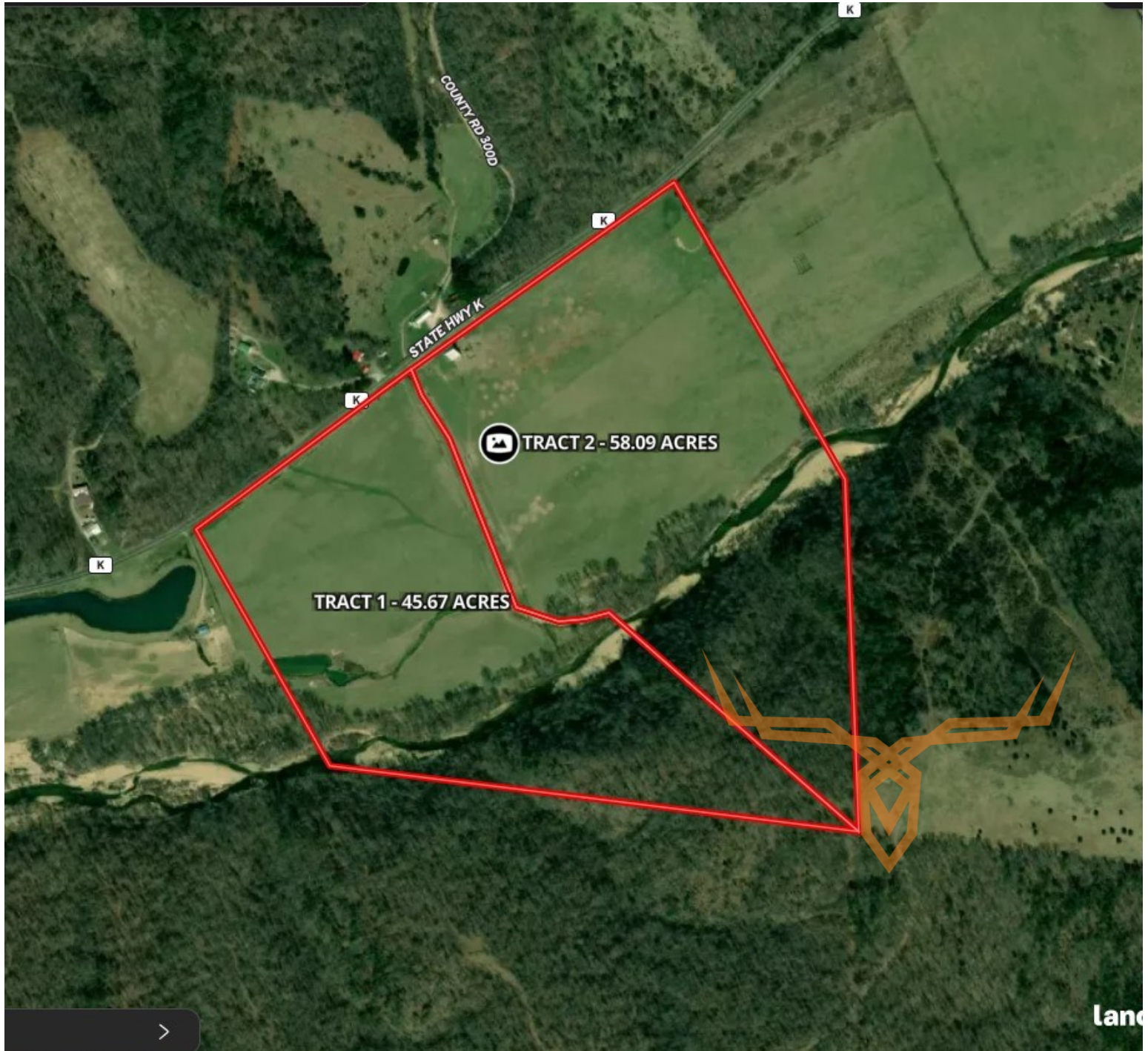
The information is believed to be accurate; however, no liability for its accuracy, errors or omissions is assumed. All lines are drawn on maps, photographs, etc. are approximate. Buyers should verify the information to their satisfaction. There are no expressed or implied warranties pertaining to this property. Both real estate (including all improvements, if any) is being sold As Is, Where Is with NO warranties expressed or implied. Please make all inspections and have financing arranged prior to the end of bidding.



T R O P H Y
PROPERTIES AND AUCTION
LAND | RECREATIONAL | RESIDENTIAL

Reynolds County Missouri Land for Sale at iAuction - Logan Creek Ranch II

www.TrophyPA.com • (855) 573-5263 • leads@trophyPA.com



The information is believed to be accurate; however, no liability for its accuracy, errors or omissions is assumed. All lines are drawn on maps, photographs, etc. are approximate. Buyers should verify the information to their satisfaction. There are no expressed or implied warranties pertaining to this property. Both real estate (including all improvements, if any) is being sold As Is, Where Is with NO warranties expressed or implied. Please make all inspections and have financing arranged prior to the end of bidding.