



52.51 Acre Private Equestrian Estate for Sale - St. Charles County

T R O P H Y
PROPERTIES AND AUCTION
LAND | RECREATIONAL | RESIDENTIAL

www.TrophyPA.com • (855) 573-5263 • leads@trophyapa.com

NEW PRICE!



PROPERTY ADDRESS:

2962 Hwy Z
Wentzville, MO 63385

PRICE: \$2,250,000

ACRES: 52.51

COUNTY: St. Charles

PROPERTY HIGHLIGHTS:

- 52 Acre Private Equestrian Estate
- 80x40 Shop
- Gated Entrance
- 30x35 Stable
- Beautiful Home with Quality Details
- Kennels
- Lake & Creek, Pasture, Tillable & Timber

PROPERTY DESCRIPTION:

This estate on 52.51 acres offers the perfect blend of seclusion, amenities, and luxury. The stone and iron gated entrance opens to a winding drive to a 2,282 sq ft mid-century modern full of meticulous detail and floor to ceiling windows throughout.

The main floor has amazing natural light complimenting the wood and stone floors. The details are everywhere including the wood and copper cabinetry covering the refrigerator. The kitchen is centrally located with great room, fireplace, and dining on one side and a living room with additional stone fireplace and massive windows on the other. There is a master with gas stove, huge closet, and master bath. Then another bedroom with closet and private bath as well.

In the finished walk out basement there is 3rd bathroom with steam shower, large sleeping room with closets, large rec room, wet bar, and 4th wood stove. The utility/laundry has more cabinetry and an additional double oven. This property is turnkey for



PRESENTED BY:

PAUL DILLER

Land & Home Specialist - MO

M: (636) 262-6352

P: (855) 573-5263 x742

E: pdiller@trophyapa.com

Trophy Properties and Auction

15480 Clayton Road

Suite 101

Ballwin, MO 63011

www.Trophyapa.com

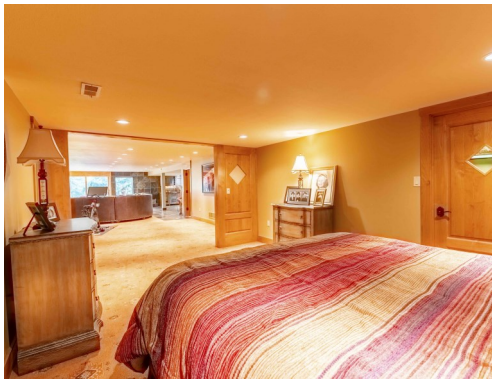
leads@trophyapa.com

52.51 Acre Private Equestrian Estate for Sale - St. Charles County

www.TrophyPA.com • (855) 573-5263 • leads@trophyapa.com

the naturalist. There is an attached heated shop and kennel with full bath. There are 2 additional outbuildings; 84 x 40 shop, concrete floors, roll up doors, and paint bay. And a 30 x 35 stable. Behind the barns you'll find a lake with dock and beach, 13 acres fenced pasture, and 17 acres tillable. This estate is made more desirable as it is surrounded by trees and a creek on the southern boundary. Even with development in the area, the views should remain unchanged.

You can buy your country estate and seclusion all within 10 min of Wentzville, 5 min to New Melle, 15 min to N/64.





T R O P H Y
PROPERTIES AND AUCTION
LAND | RECREATIONAL | RESIDENTIAL

52.51 Acre Private Equestrian Estate for Sale - St. Charles County

www.TrophyPA.com • (855) 573-5263 • leads@trophyapa.com



Broker does not guarantee the accuracy of sq. ft., lot size, or other information, buyer is advised to independently verify the accuracy of information through personal inspection and with appropriate professionals