



**T R O P H Y**  
PROPERTIES AND AUCTION  
LAND | RECREATIONAL | RESIDENTIAL

# Residential Building Lot for Sale in The Estates at Matteson Park

www.TrophyPA.com • (855) 573-5263 • leads@trophyhpa.com



**PROPERTY ADDRESS:**

00 Matteson Blvd.  
O'Fallon, MO 63366

**PRICE:** \$480,000

**ACRES:** 7.19

**COUNTY:** St. Charles

**PROPERTY HIGHLIGHTS:**

- Residential building lots
- Ready to build
- Gated community
- Close to Amenities
- Partially wooded lot

**PROPERTY DESCRIPTION:**

This 7.19 acre lot is nestled in the Estates at Matteson Park and comes ready to build your dream home. This beautiful lot features an open flat front portion of the lot for a home to be built set back from Matteson Blvd. The lot gives way to a wooded valley, perfect for a relaxing, shaded back yard.

Seller is willing to divide into 3.59 and 3.60 acre lots. Contact Listing Agent for pricing.

If you are looking for the perfect location that's quiet and relaxing, yet close enough to have all the amenities you are looking for... look no more.



**PRESENTED BY:**

**MICHAEL WARDLAW**

**Land Specialist**

M: (314) 914-0840

P: (855) 573-5263 x709

E: mwardlaw@trophyhpa.com

**Trophy Properties and Auction**

640 Cepi Drive, Suite 100

Chesterfield, MO 630056

www.Trophyhpa.com

leads@trophyhpa.com

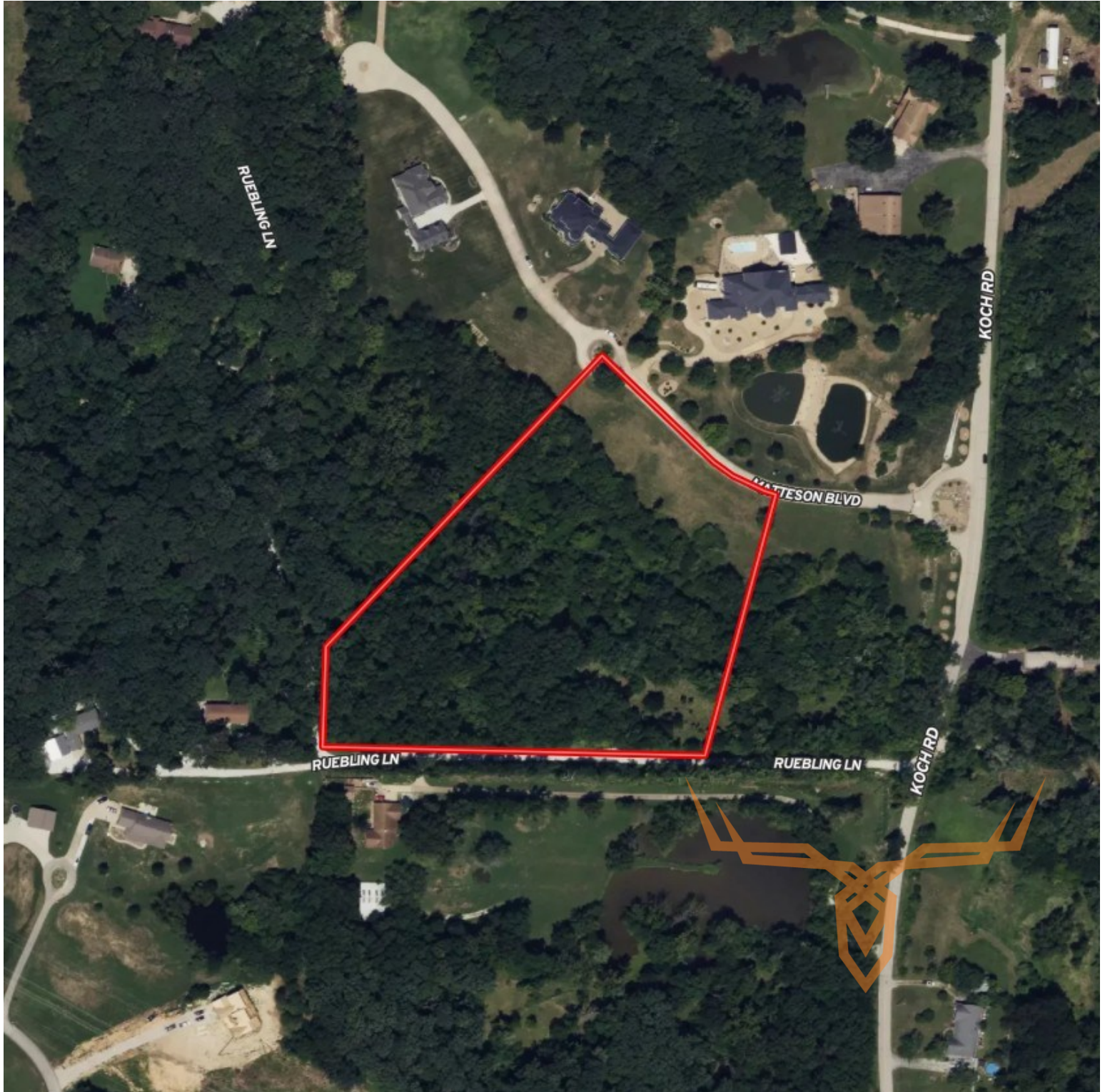




**T R O P H Y**  
PROPERTIES AND AUCTION  
LAND | RECREATIONAL | RESIDENTIAL

# Residential Building Lot for Sale in The Estates at Matteson Park

[www.TrophyPA.com](http://www.TrophyPA.com) • (855) 573-5263 • [leads@trophy.com](mailto:leads@trophy.com)



Broker does not guarantee the accuracy of sq. ft., lot size, or other information, buyer is advised to independently verify the accuracy of information through personal