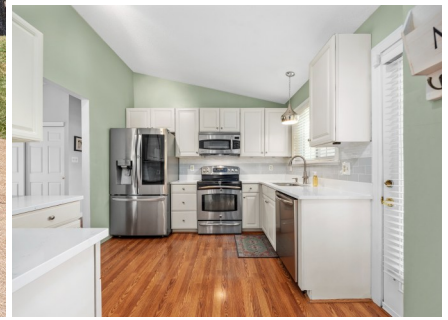


TROPHY

RESIDENTIAL

PROPERTIES



ADDRESS: 151 HOLLY GARDEN DRIVE, BALLWIN, MO 63021

PRICE: \$379,900

BEDROOMS: 4

BATHROOMS: 3

LIVING AREA: 2,073 SF

YEAR BUILT: 1979

SCHOOLS DIST: Parkway C-2

TAXES/TAX YR: \$3,511/2024

HOA FEES: \$150/yr.

PROPERTY HIGHLIGHTS:

- Great location on quiet cul-de-sac.
- Parkway South schools
- 4 bedrooms
- Move in ready
- 3 baths

PROPERTY DESCRIPTION:

Nestled in the heart of Ballwin on a quiet cul-de-sac, this beautifully maintained 4 bed, 3 bath home offers modern updates and timeless comfort. The open, airy main level features quartz countertops in the kitchen, inviting and spacious living areas, and a serene primary suite with a custom jacuzzi bath/shower. All bathrooms boast fresh finishes.

A full-length deck overlooks the backyard perfect for morning coffee or summer barbecues. The partially finished walk-out basement includes a cozy fireplace, second master suite with walk-in closet, full bath, and abundant custom storage. Anderson double sliding door leads to a patio and shed. Move-in ready and full of pride, this one's a must-see. Don't miss your chance to make this exceptional property yours—it's ready to welcome you home! Showings start Sunday, August 24th with an Open House being held from 1:00 – 3:00 PM.

Owner is a licensed real estate agent in the state of Missouri



PRESENTED BY:

KEITH EARLS

Salesperson

M: (314) 623-4005

P: (855) 573-5263 x 724

E: kearls@trophy.com

Trophy Residential Properties

A Division of Trophy Properties and Auction

640 Cepi Drive, Suite 100

Chesterfield, MO 63005

(855) 573-5263

www.trophy.com

TROPHY

RESIDENTIAL
PROPERTIES



Broker does not guarantee the accuracy of sq. ft., lot size, or other information, buyer is advised to independently verify the accuracy of information through personal inspection and with appropriate professionals.