



T R O P H Y
PROPERTIES AND AUCTION
LAND | RECREATIONAL | RESIDENTIAL

40.3 Acres Tillable Ground for Sale - Schuyler County

www.TrophyPA.com • (855) 573-5263 • leads@trophyapa.com



PROPERTY ADDRESS:

00 Hwy W
Queen City, MO 63561

PRICE: \$320,000

ACRES: 40.3±

COUNTY: Schuyler

PROPERTY HIGHLIGHTS:

- 40± acres
- Highly tillable ground
- Highway frontage
- Close to town

PROPERTY DESCRIPTION:

Nice gently rolling farm near Queen City. This 40 acre tract is mostly tillable and has highway frontage close to town. It would make a great addition to an existing operation or a good place for someone to start farming.



PRESENTED BY:

FRANK WALLACE

Land & Home Specialist

M: (573) 470-0779

P: (855) 573-5263 x718

E: fwallace@trophyapa.com

PARKER WALLACE

Land & Home Specialist

M: (573) 470-6779

P: (855) 573-5263 x713

E: pwallace@trophyapa.com

Trophy Properties and Auction

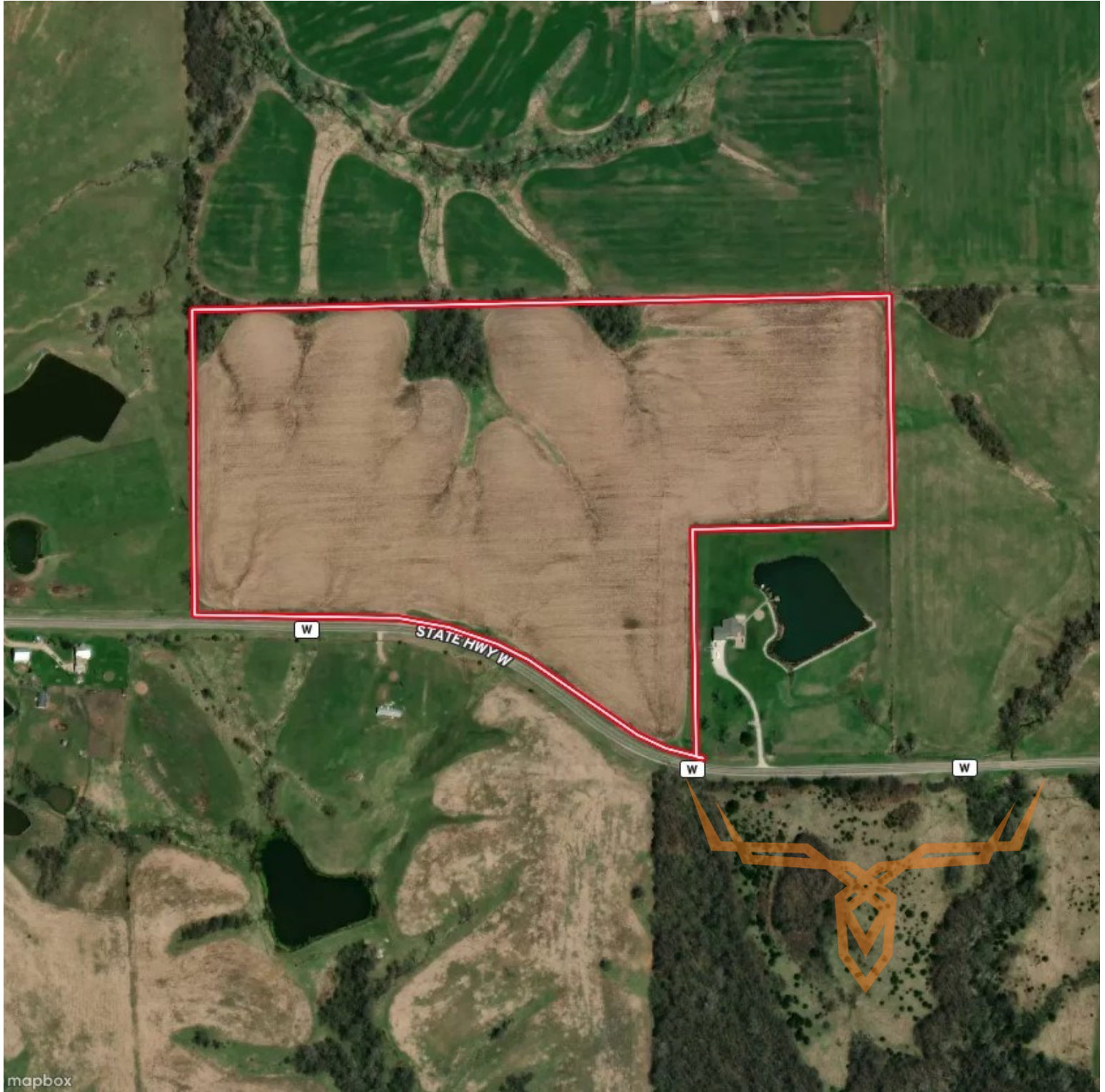
640 Cepi Drive, Suite 100
Chesterfield, MO 63005



T R O P H Y
PROPERTIES AND AUCTION
LAND | RECREATIONAL | RESIDENTIAL

40.3 Acres Tillable Ground for Sale - Schuyler County

www.TrophyPA.com • (855) 573-5263 • leads@trophy.com



Broker does not guarantee the accuracy of sq. ft., lot size, or other information, buyer is advised to independently verify the accuracy of information through personal inspection and with appropriate professionals