



Stanton County Kansas Land for Sale at iAuction - DRF Farm

T R O P H Y
PROPERTIES AND AUCTION
LAND | RECREATIONAL | RESIDENTIAL

www.TrophyPA.com • (855) 573-5263 • leads@trophy.com



PROPERTY ADDRESS:

00 W Rd 6
Manter, KS 67862

ACRES: 160
COUNTY: Stanton

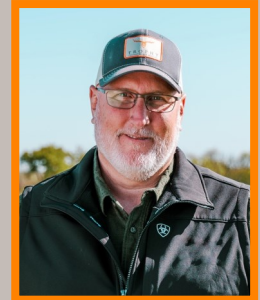
AUCTION DETAILS:

Bidding Ends Wednesday, December 13th at 10AM.

Don't miss this opportunity to add a quarter section of high-quality very flat dryland acres located in western Stanton County to your operation or investment portfolio. This is a 100% tillable tract with soils consisting of 86% Richfield silt loam with 0 to 1 percent slopes, and 14% Ulysses silt loam with 0 to 1 percent slopes. FSA shows 156.73 acres farmland. Wheat base is 73.7 acres and 30 PLC yield. Additional FSA information can be found in the listing downloads.

Any minerals possessed by the seller will transfer to the buyer. The legal description is S33, T27, R43W, NW4. Directions from the northwest corner of Manter, go north on North Manter Grade 9.5 miles to West Road 6. Go west on West Road 6 seven and a half miles. The property is on the south side of West Road 6. Property taxes in 2022 were \$515.37.

Tenant rights exist for the property with approximately 156-acres of winter wheat planted 9-2-2023. The buyer receives the 1/3 landowner share of this wheat crop when harvested in 2024. Possession will be the day following harvest of the crop in 2024.



PRESENTED BY:

DAN MELSON

Land Specialist - KS

M: (785) 979-3402

P: (855) 573-5263 x729

E: dmelson@trophy.com

Trophy Properties and Auction

15480 Clayton Road

Suite 101

Ballwin, MO 63011

www.Trophy.com

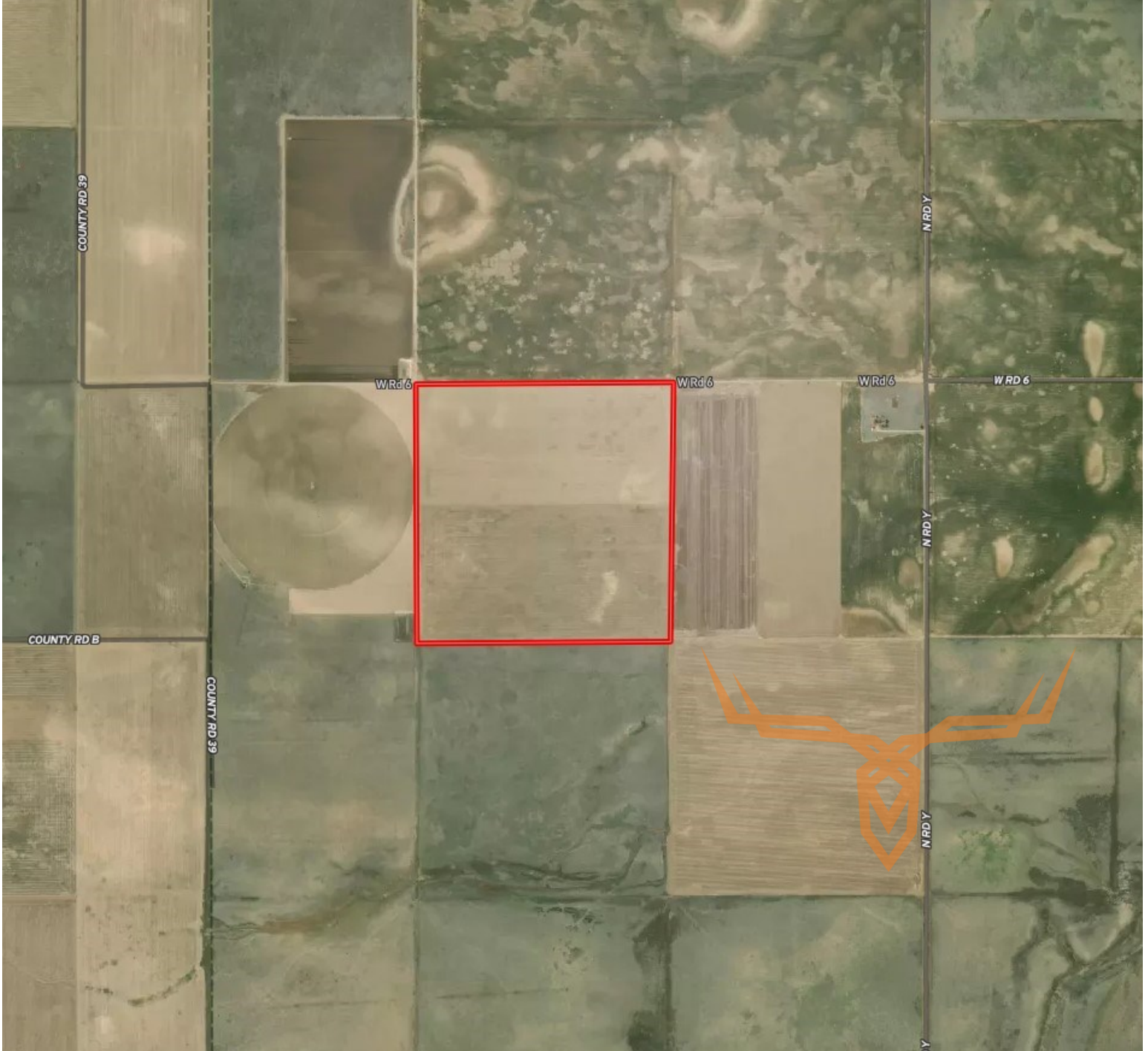
leads@trophy.com



Stanton County Kansas Land for Sale at iAuction - DRF Farm

T R O P H Y
PROPERTIES AND AUCTION
LAND | RECREATIONAL | RESIDENTIAL

www.TrophyPA.com • (855) 573-5263 • leads@trophy.com



The information is believed to be accurate; however, no liability for its accuracy, errors or omissions is assumed. All lines are drawn on maps, photographs, etc. are approximate. Buyers should verify the information to their satisfaction. There are no expressed or implied warranties pertaining to this property. Both real estate (including all improvements, if any) is being sold As Is, Where Is with NO warranties expressed or implied. Please make all inspections and have financing arranged prior to the end of bidding.