



T R O P H Y
PROPERTIES AND AUCTION
LAND | RECREATIONAL | RESIDENTIAL

Scenic 9± Acre Wooded Tract Near Table Rock Lake For Sale—Stone County

www.TrophyPA.com • (855) 573-5263 • leads@trophyha.com



PROPERTY ADDRESS:

00 Y-14-B Babawamee Way
Galena, MO 65656

PRICE: \$72,500

ACRES: 9±

COUNTY: Stone

PROPERTY HIGHLIGHTS:

- 9± m/l Wooded Acres
- Stunning Views of Table Rock Lake
- Quiet Retreat
- Potential Build Sites
- Near 700± Acres of Mark Twain National Forest
- 20 Minutes from Cape Fair
- 40 Minutes from Branson
- Rich in Wildlife

PROPERTY DESCRIPTION:

Discover approximately 9 wooded acres just outside Reed Springs, Missouri, offering breathtaking views of Table Rock Lake and a tranquil, private setting surrounded by nature. This parcel is abundant with wildlife and features several ideal building sites, making it perfect for your dream home, a weekend retreat, or an investment getaway. With electricity already running on the property, development is straightforward and convenient. Whether you're attracted to the tranquility of the trees or the glimpses of the lake, this land uniquely combines seclusion with accessibility.

Located just 20 minutes from Cape Fair and 40 minutes from Branson, you'll enjoy the charm of the quiet countryside while being close to vibrant city attractions. Outdoor enthusiasts will appreciate being just down the road from over 700 acres of Mark Twain National Forest—an expansive playground for hunting, hiking, and exploration. While the property is situated across the cove from the Ants Creek public ramp and campground, accessing the water is quicker from Cape Fair's public boat ramp, making it the more practical option for lake access. Whether you seek nature, recreation, or development potential, this property offers an exceptional package in a picturesque setting.



PRESENTED BY:

WAYLON MARTIN

Land Specialist

M: (417) 410-5964

P: (855) 573-5263 x712

E: wmartin@trophyha.com

Trophy Properties and Auction

640 Cepi Drive, Suite 100

Chesterfield, MO 630056

www.Trophyha.com

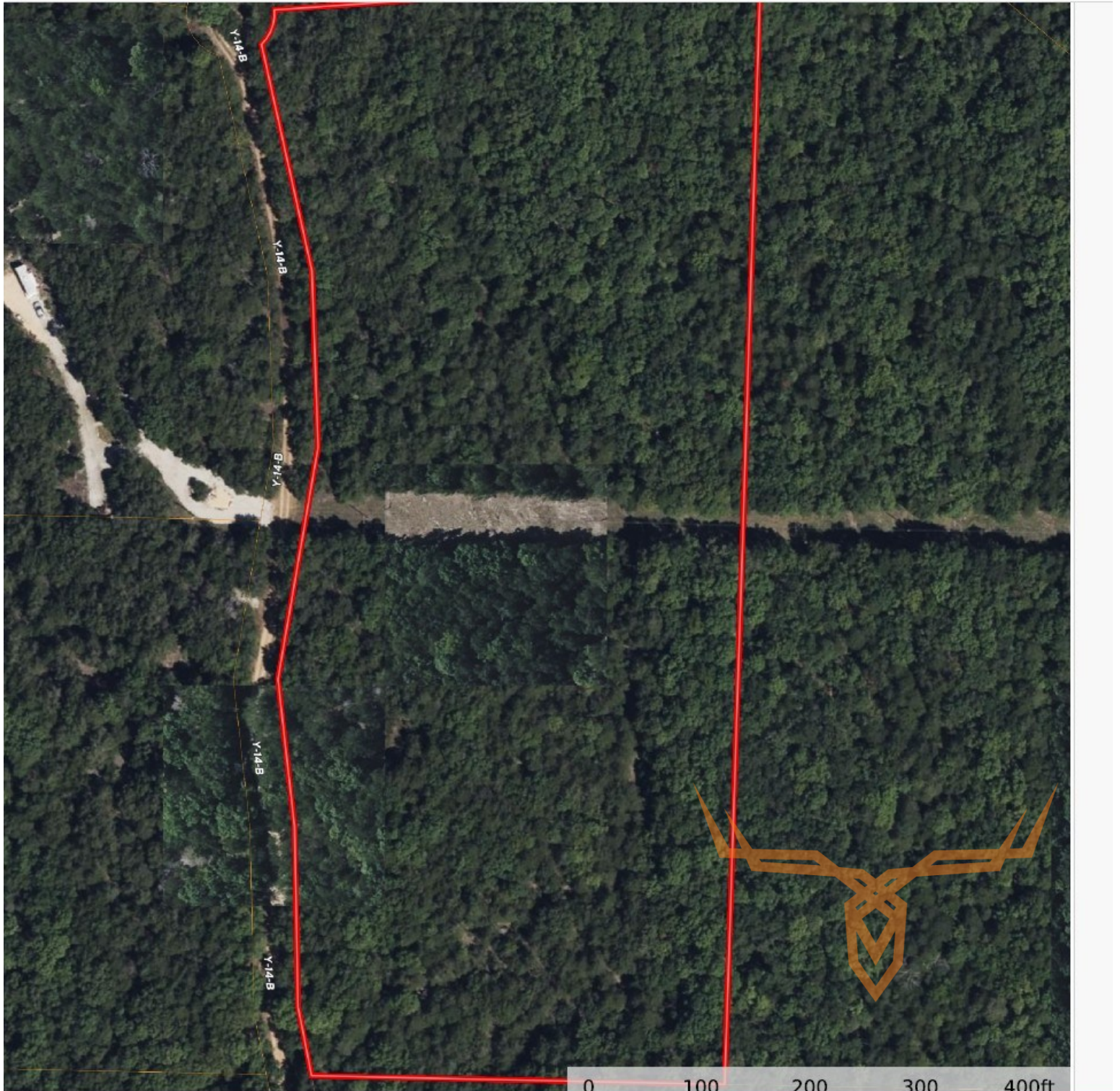
leads@trophyha.com



T R O P H Y
PROPERTIES AND AUCTION
LAND | RECREATIONAL | RESIDENTIAL

Scenic 9± Acre Wooded Tract Near Table Rock Lake For Sale—Stone County

www.TrophyPA.com • (855) 573-5263 • leads@trophy.com



Broker does not guarantee the accuracy of sq. ft., lot size, or other information, buyer is advised to independently verify the accuracy of information through personal inspection and with appropriate professionals