



Sumner County Kansas Land iAuction - The Edwards Family Trust

www.TrophyPA.com • (855) 573-5263 • leads@trophy.com



BIDDING ENDS TUESDAY, JUNE 27TH AT 10:00 AM
SEE FULL TERMS & CONDITIONS AT WWW.TROPHYPA.COM



PROPERTY ADDRESS:

00 W 20th Ave N.
Argonia, KS 67004

ACRES: 80

COUNTY: Sumner

AUCTION DETAILS:

Property Preview Saturday, June 17th 11AM to 1PM.

Bidding Ends Tuesday, June 27th at 10AM.

These 80± acres (S2 NW4 S7, T32S, R3W) of farmland are located 4 miles north-east of Argonia and approximately 15 miles west of Wellington. The Farm Service Agency shows 77.19 acres of cropland. The soils consist of Shellabarger sandy loam, Nalim loam, and Milan loam.

Directions from Wellington: Head west on KS-160 15 miles. Turn north on North Bluff Road and proceed approximately .5 miles. Farm will be on the east side of North Bluff Road.



PRESENTED BY:

DAN MELSON

Land Specialist—KS/MO

M: (785) 979-3402

P: (855) 573-5263 x729

E: dmelson@trophy.com

Trophy Properties and Auction

15480 Clayton Road

Suite 101

Ballwin, MO 63011

www.Trophy.com

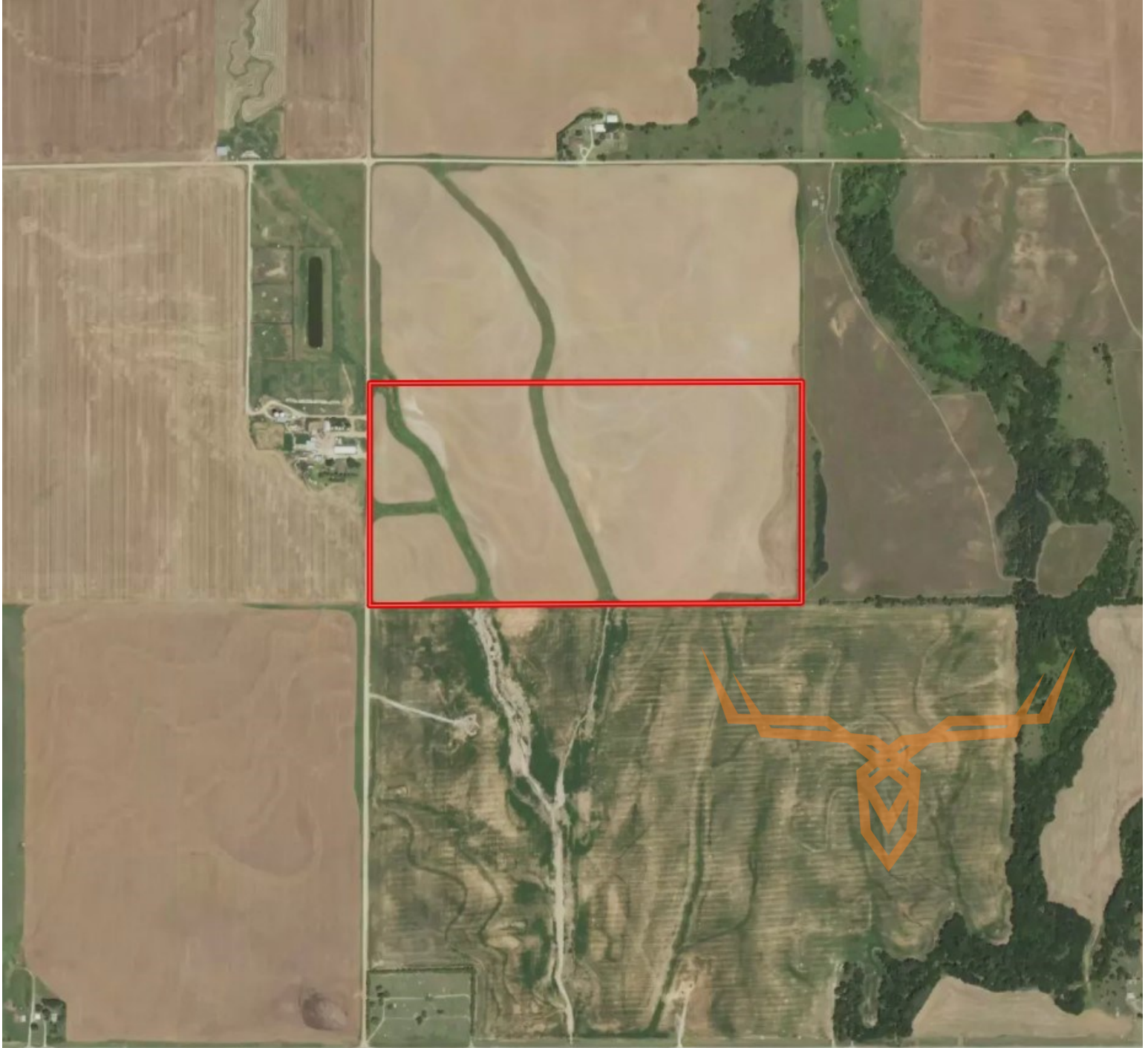
leads@trophy.com



T R O P H Y
PROPERTIES AND AUCTION
LAND | RECREATIONAL | RESIDENTIAL

Sumner County Kansas Land iAuction - The Edwards Family Trust

www.TrophyPA.com • (855) 573-5263 • leads@trophy.com



The information is believed to be accurate; however, no liability for its accuracy, errors or omissions is assumed. All lines are drawn on maps, photographs, etc. are approximate. Buyers should verify the information to their satisfaction. There are no expressed or implied warranties pertaining to this property. Both real estate (including all improvements, if any) is being sold As Is, Where Is with NO warranties expressed or implied. Please make all inspections and have financing arranged prior to the end of bidding.