

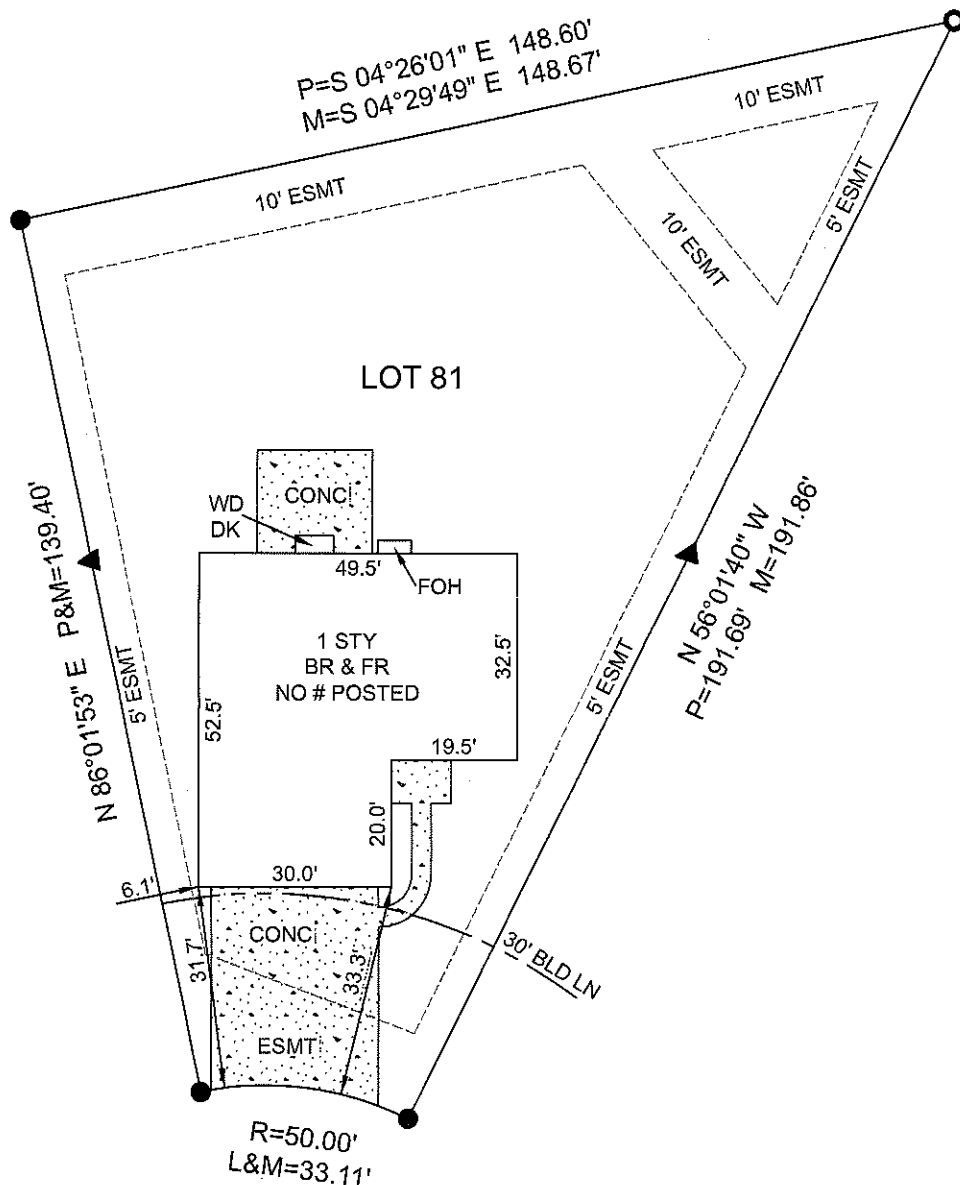
# BOUNDARY SURVEY

## LOT 81 RIVERDALE VILLAGE A PLAT TWO

### PB 44 PG 261, ST CHARLES COUNTY, MO

L PLATTED LENGTH  
P PLATTED DISTANCE  
M MEASURED DISTANCE  
● SET REBAR  
▲ SET POINT ON LINE  
○ FOUND REBAR  
6' SIDE YARD SETBACK  
25' REAR YARD SETBACK

1" = 30'



#510 RIVERDALE PARK COURT (42'W)

SHEET 1 OF 2



PO BOX 278  
COTTLEVILLE, MO 63338  
PHONE: 636.922.1001  
Corp # 2005000229  
www.CardinalSurveying.com

JOB # 1403098  
FB 274:5

FIELD WORK BY: CML/WDR

DRAWN BY: KSL/AEC

REVIEWED BY:  
WILLIAM JACOB CLARK  
LS# 2002014101

This is to certify that on March 13th, 2014 a request by Old Republic Title Company was made for a Boundary Survey and to locate the improvements on the above named tract and that the results are, to the best of my knowledge, correctly represented on this drawing.

