

SECT
TOWNSH
RANGI
CITY OF
WARREN

OLD IRON ROD
NW CORNER OF
SE 1/4 NE 1/4
S 88°51'E
60.31'
SET IRON ROD

MISSOURI STATE HIGHWAY "47"
N 00°20'E 660.80'

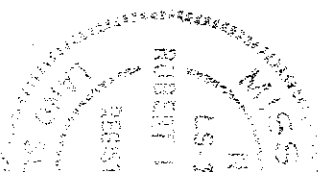
SET IRON ROD
5.06' WEST
OF POST

S 88°51'E 1314.93'

N. 1/2, S.E. 1/4, N.E. 1/4

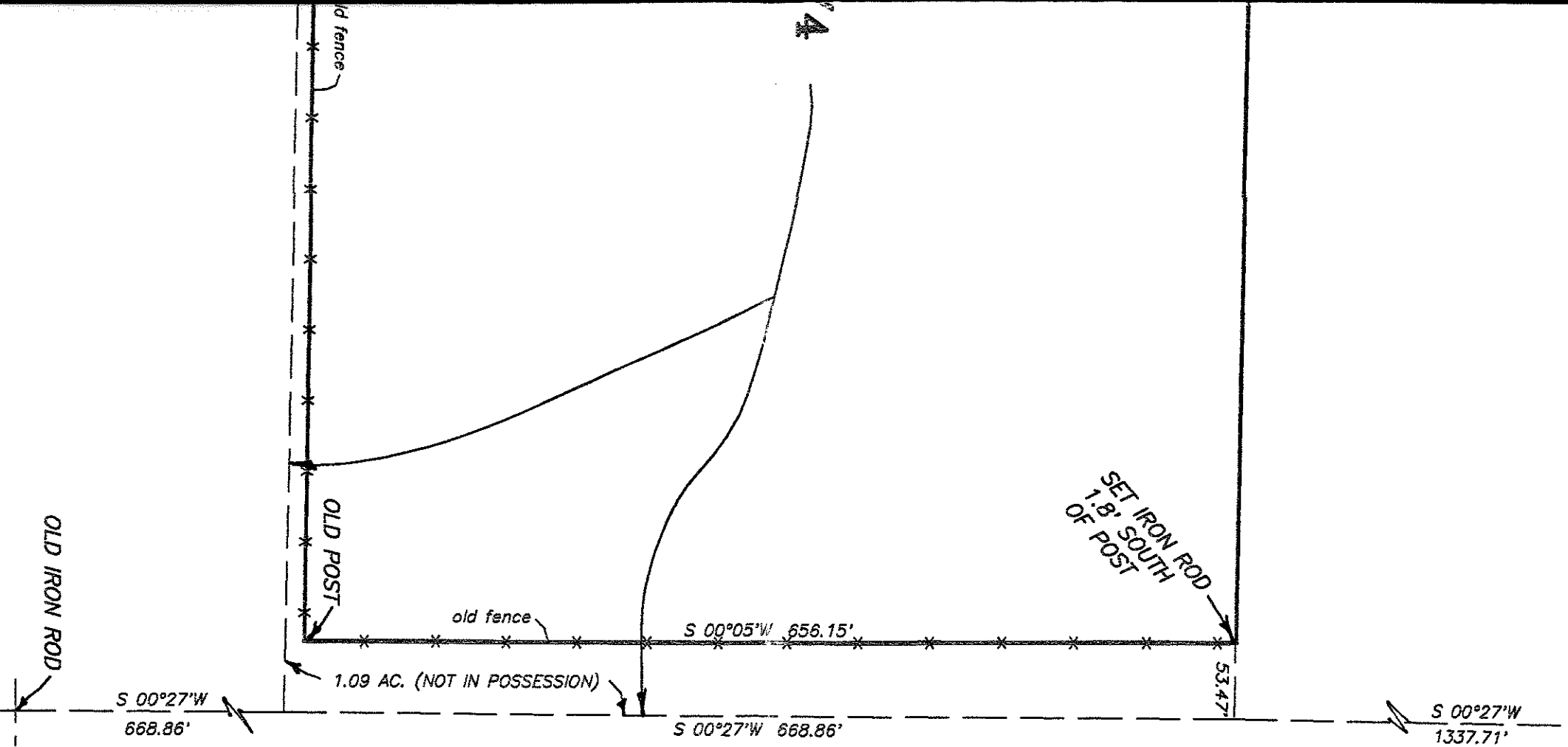
19.90 AC.

N 89°03'W 1317.74'



SECTION 16
T 2 WEST
WARRENTON
COUNTY, MO.

N.E. CORNER
SECTION 16



THIS IS TO CERTIFY THAT AT THE REQUEST OF
RUSSELL WALLEN, WE HAVE MADE A

SURVEY AS SHOWN ABOVE AND THAT IT REPRESENTS A
TRUE AND ACCURATE RECORD OF SAID SURVEY AND
WAS EXECUTED IN ACCORDANCE WITH THE CURRENT
MINIMUM STANDARDS FOR PROPERTY BOUNDARY SURVEYS
OF THE MISSOURI STATE LAND SURVEY.

ROBERT L. LEWIS

PROFESSIONAL LAND SURVEYOR NO. 1004
WARREN COUNTY SURVEYOR

CLASS OF SURVEY--SUBURBAN
SUBJECT TO: EASEMENTS OF RECORD

Lewis-Bade Inc.
Professional Land Surveyors
and Professional Engineers

PHONE (636) 456-2615 101 EAST WALTON WARRENTON, MO. 63383

| SURVEYED BY | DATE | REVISIONS |
|--------------------|----------------------|-----------------------------|
| ALL CREWS | 1 - 2004 | |
| DRAWN BY: RANDY | CHECKED BY: LARRY | SCALE 1" = 100' 04027 |