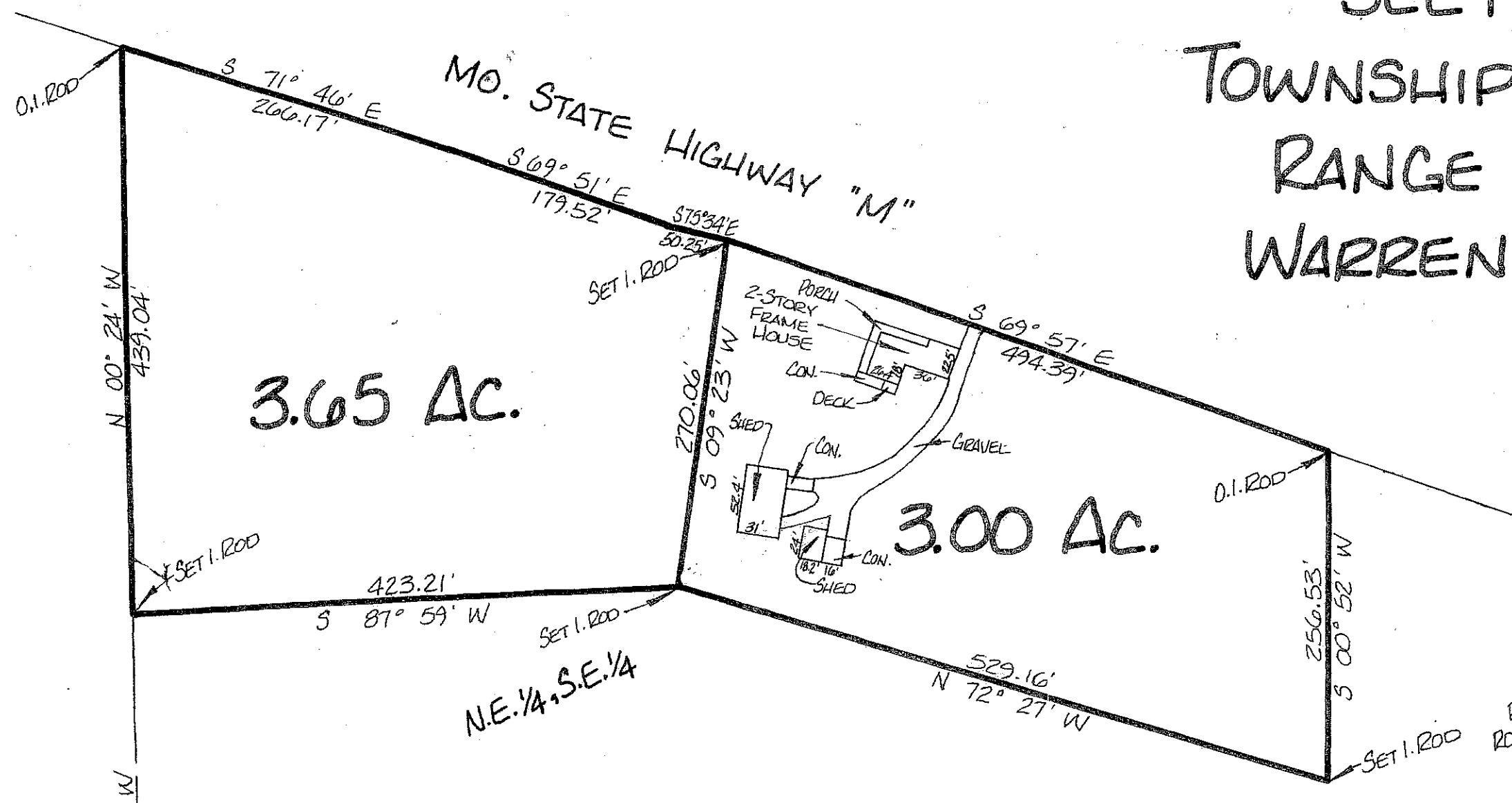


SECTION 33, TOWNSHIP 47 NORTH, RANGE 1 WEST, WARREN COUNTY, MO.



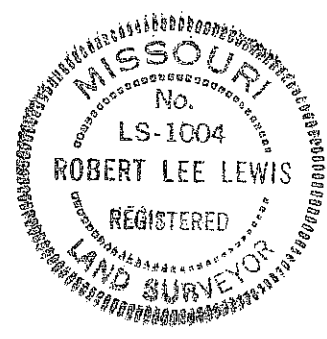
3.65 AC.

3.00 AC.


N.E. 1/4, S.E. 1/4

PROPERTY N/F
ROBERT L. & JUNE M.
HARLEY
550/259

0. STONE @
S.W. CORNER,
S.E. 1/4, S.E. 1/4



THIS IS TO CERTIFY THAT AT THE REQUEST OF
ALLAN SHERRY WE HAVE MADE A
SURVEY AS SHOWN ABOVE AND THAT IT REPRESENTS A
TRUE AND ACCURATE RECORD OF SAID SURVEY AND
WAS EXECUTED IN ACCORDANCE WITH THE CURRENT
MINIMUM STANDARDS FOR PROPERTY BOUNDARY SURVEYS
OF THE MISSOURI STATE LAND SURVEY.
Robert L. Lewis
ROBERT L. LEWIS
REGISTERED LAND SURVEYOR
L.S. No. 1004

 Lewis-Bade, Inc. Registered Land Surveyors and Professional Engineers			
SURVEYED BY	DATE	REVISIONS	
	3/90		
DRAWN BY	CHECKED BY	SCALE	
VICKI	LARRY	1"=100'	